

## WALTHERSPROTO.

SCALE	EXPECTED DELIVERY	ANNOUNCED
H0	Fall 2023	December 2022

**LIMITED QUANTITY**  
ONE TIME RUN OF THESE ROADNUMBERS  
**ORDER NOW**

### EMD SD9

**LokSound 5 Sound & DCC**  
\$319.98 ea

**Standard DC**  
\$219.98 ea

- Prototypes in service 1954 to the present - several preserved today!
- Used in helper, yard, transfer, heavy freight & branch line service
- Available w/LokSound 5 Sound & DCC for DCC or DC layouts
- Road- & era-specific details
- Early Flexicoil sideframes w/brake cylinders & piping
- Cab interior w/Crew
- Formed wire grab irons
- Etched-metal lift rings
- 21-pin DCC plug
- Correct size RP-25 metal wheels
- All-wheel drive & electrical pick up
- 5 pole, skew-wound, high-torque, high-efficiency can motor
- Helical gears with 14:1 ratio for smooth, quiet running
- Easy multiple-unit operation
- Superb paint and lettering



920-41707

- Warm white LED constant & directional headlights
- Heavy die-cast metal underframe
- Proto MAX™ metal knuckle couplers
- Perfect for use with new WaltherMainline 24' Minnesota Taconite Car 4-Packs (#910-58066 series) and Extended Wide-Vision Caboose (#910-8700 series), each sold separately

### Products Available



#### Chicago, Burlington & Quincy

- Brass WABCO single-chime air horns (2)
- Brass firecracker radio antenna
- Operating CB&Q light package - Pyle dual sealed-beam headlights & front dual Gyralight w/clear & red lens for DCC; headlights & front clear Gyralight for DC
- Bolted-style handrail stanchions
- Pilot plates w/footboards & MU cable boxes
- MU hoses
- Standard cut levers
- CB&Q-style covered steam generator intake & exhaust w/grab irons
- Dynamic brakes
- Small winterization hatch w/photo-etched grille
- Roof-mounted air cooling piping
- Photo-etched cab sunshades

920-41701 #328 LokSound 5 Sound & DCC  
920-41702 #339 LokSound 5 Sound & DCC  
920-48701 #333 Standard DC  
920-48702 #344 Standard DC



#### Chicago & Illinois Midland

- Brass Leslie S-2M & single-chime air horns
- Brass firecracker radio antenna
- Rolled-style handrail stanchions
- Drop steps
- Pilots w/footboards & MU cable boxes
- MU hoses
- Pyle dual sealed-beam headlight
- Nondynamic long hood
- Small winterization hatch w/photo-etched grille
- Roof-mounted air cooling piping
- Roof-top bell
- 2 C&IM-style all-weather windows w/"glass"

920-41703 #50 LokSound 5 Sound & DCC  
920-41704 #52 LokSound 5 Sound & DCC  
920-48703 #51 Standard DC  
920-48704 #54 Standard DC

## WALTHERSPROTO

SCALE	EXPECTED DELIVERY	ANNOUNCED
H0	Fall 2023	December 2022

**LIMITED QUANTITY**  
ONE TIME RUN OF THESE ROADNUMBERS  
**ORDER NOW**

### Products Available



#### Duluth, Missabe & Iron Range

##### Large Circle Logo

- NEW - Working Pyle-National beacon
- Brass Nathan P5 air horn
- Brass Firecracker radio antenna
- Long hood w/48" fans
- Crew speaker w/conduit
- Pyle dual sealed-beam headlights
- Missabe-style bracket w/bell
- 2 all-weather windows w/"glass"
- Large winterization hatch w/photo-etched grille
- Dynamic brakes
- Rolled-style handrail stanchions
- Drop steps
- Pilots w/footboards & MU cable boxes
- MU hoses

920-41705 #142 LokSound 5 Sound & DCC  
920-41706 #158 LokSound 5 Sound & DCC  
920-48705 #147 Standard DC  
920-48706 #155 Standard DC

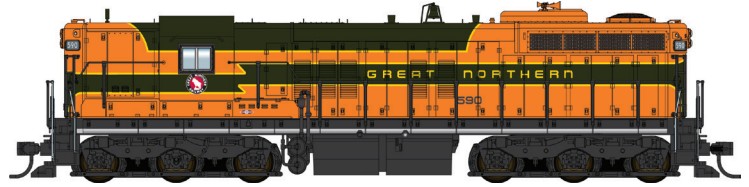


#### Duluth, Missabe & Iron Range

##### Arrowhead Scheme

- NEW - Working small beacon
- Brass Nathan P5 air horn
- Brass Firecracker radio antenna
- Long Hood w/48" fans
- Crew speaker w/conduit
- Pyle dual sealed-beam headlights
- Missabe-style bracket w/bell
- 2 all-weather windows w/"glass"
- Large winterization hatch w/photo-etched grille
- Dynamic brakes
- Rolled-style handrail stanchions
- Drop steps
- Pilots w/footboards & MU cable boxes
- MU hoses

920-41707 #134 LokSound 5 Sound & DCC  
920-41708 #139 LokSound 5 Sound & DCC  
920-48707 #138 Standard DC  
920-48708 #144 Standard DC



#### Great Northern

- Brass Leslie RS-3L air horn w/photo-etched GN-style horn bracket
- Brass Firecracker radio antenna
- Long hood w/48" fans
- Roof-mounted bell
- Large winterization hatch w/photo-etched grille & GN-style walkway
- Fuel tank breather pipe
- Rolled-style handrail stanchions
- Drop steps
- Pilots w/footboards & MU cable boxes
- Pyle dual sealed-beam headlights
- Nondynamic long hood
- 2 all-weather windows w/"glass"

920-41709 #590 LokSound 5 Sound & DCC  
920-41710 #595 LokSound 5 Sound & DCC  
920-48709 #591 Standard DC  
920-48710 #596 Standard DC



#### Southern Pacific<sup>1</sup>

##### Black Widow

- Brass Nathan P-3 air horn
- Whip radio antenna
- Operating "ash can" warning lights front & rear on DCC; front only on DC
- Steam generator w/short exhaust & dual pipe
- Mars dual sealed-beam headlights
- Dynamic brakes
- Roof-mounted air cooling piping
- Cab window deflectors
- Photo-etched cab sunshades
- Bolted-style handrail stanchions
- Drop steps
- MU hoses

920-41711 #5348 LokSound 5 Sound & DCC  
920-41712 #5371 LokSound 5 Sound & DCC  
920-48711 #5355 Standard DC  
920-48712 #5364 Standard DC

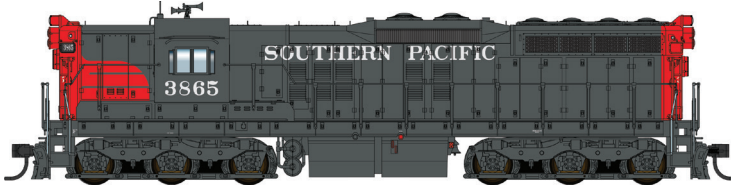
<sup>1</sup>Union Pacific licensed product

## WALTHERSPROTO.

SCALE	EXPECTED DELIVERY	ANNOUNCED
H0	Fall 2023	December 2022

**LIMITED QUANTITY**  
ONE TIME RUN OF THESE ROADNUMBERS  
**ORDER NOW**

### Products Available

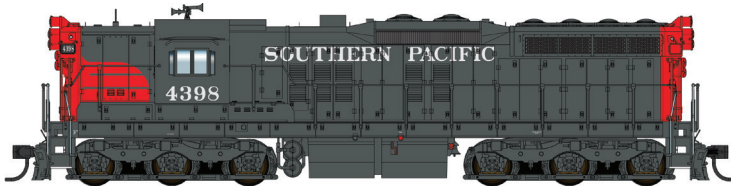


#### Southern Pacific†

##### Gray & Scarlet - 1965 Renumbering

- Brass Nathan P3 air horn
- Whip-style radio antenna w/mast & SP-style conduit
- SP 5-light package w/Mars dual sealed-beam headlights, Gyalright & UDE emergency light for DCC; operating headlights & front Gyalright on DC units
- Cab-mount wind deflectors
- Photo-etched cab sunshades
- Rolled-style handrail stanchions
- Drop steps
- SP-style pilot plows front & rear
- Dynamic brakes
- Roof-mounted air cooling piping
- MU hoses

920-41713 #3865 LokSound 5 Sound & DCC  
920-41714 #3900 LokSound 5 Sound & DCC  
920-48713 #3873 Standard DC  
920-48714 #3922 Standard DC



#### Southern Pacific†

##### Gray & Scarlet - 1970s SD9E Rebuild/Renumber

- Brass Nathan P3 air horn
- Whip-style radio antenna w/mast & SP-style conduit
- SP 5-light package w/Pyle dual sealed-beam headlights, Gyalright & UDE emergency light for DCC; operating headlights & front Gyalright on DC units
- SD9E dynamic brakes
- SD9 "umbrella" electrical cabinet hood
- Cab-mount wind deflectors
- Photo-etched cab sunshades
- Rolled-style handrail stanchions
- Drop steps
- SP-style pilot plows front & rear
- Roof-mounted air cooling piping
- MU hoses

920-41715 #4398 LokSound 5 Sound & DCC  
920-41716 #4404 LokSound 5 Sound & DCC  
920-48715 #4403 Standard DC  
920-48716 #4408 Standard DC

#### Undecorated

- 36" & 48" radiator fan long hoods
- Bolted- & Rolled-style handrails
- Drop steps
- Pilot plates w/footboards & MU cable boxes
- Pilots with or without footboards
- MU hoses
- Standard & modern cut levers
- Fuel tank breather pipe
- Steam generator w/tall & short exhaust & piping
- Pyle-National and small-style beacons & bases
- 3 styles of headlights - Pyle dual, Pyle & Mars dual sealed-beam
- Dynamic & non-dynamic hatches
- Large & small winterization hatches w/ photo-etched screen
- Roof-mounted air cooling piping
- 2 all-weather windows w/"glass"
- 4 cab wind deflectors
- Photo-etched sun shades

920-41700 LokSound 5 Sound & DCC  
920-48700 Standard DC

†Union Pacific licensed product

SCALE	EXPECTED DELIVERY	ANNOUNCED
H0	Winter 2023	December 2022

**LIMITED QUANTITY**  
**ONE TIME RUN OF THESE ROADNUMBERS**  
**ORDER NOW**

### 24' Minnesota Taconite Ore Car 4-Packs

\$109.98 ea

- Based on cars rebuilt for taconite pellet loading with side extensions
- In service 1960s to the present
- Also hauled flux stone & iron ore
- 4 car numbers per set
- Correct 5' wheelbase trucks w/33" turned-metal RP-25 wheelsets
- Die cast metal underframe for excellent tracking
- Proto MAX™ metal knuckle couplers on end cars; dummy knuckle couplers on intermediate cars
- Completely assembled, ready to use
- Perfect for use with new Walther's Proto SD9s (#910-41700/48700 series) and Walther's Mainline Extended Wide-Vision Caboose (#910-8700 series), each sold separately



910-58075

### Products Available

#### Duluth, Missabe & Iron Range



#### Safety First logo

910-58066 #52734, 52921, 52955, 52967  
 910-58068 #53047, 53058, 53076, 53111

910-58067 #51503, 51604, 51661, 51881



#### Patched Scheme

910-58072 #51019, 51038, 51355, 51686  
 910-58074 #51142, 51219, 51286, 52064

910-58073 #51052, 52177, 52254, 52408



#### Thunderbird Scheme

910-58069 #40002, 40016, 40028, 40033  
 910-58071 #40007, 40018, 40025, 400351

910-58070 #40006, 40014, 40027, 40032



SCALE	EXPECTED DELIVERY	ANNOUNCED
H0	Winter 2023	December 2022

**LIMITED QUANTITY**  
ONE TIME RUN OF THESE ROADNUMBERS  
**ORDER NOW**

### Products Available



#### Burlington Northern

910-58075 #95502, 95530, 95610, 95730  
910-58077 #95540, 95688, 95760, 95840

910-58076 #95506, 95620, 95733, 95822



#### Milwaukee Road

910-58080 #76676, 76688, 76689, 76695

910-58081 #76771, 76776, 76788, 76798



#### Great Northern

910-58078 #95503, 95534, 95552, 95570

910-58079 #95505, 95540, 95580, 95593

SCALE	EXPECTED DELIVERY	ANNOUNCED
H0	Spring 2023	December 2022

**LIMITED QUANTITY**  
 ONE TIME RUN OF THESE ROADNUMBERS  
**ORDER NOW**

### EMP GP9 Phase II w/High Short Hood

**ESU Sound & DCC**  
**\$219.98 ea**

**Standard DC**  
**\$169.98 ea (Unless Noted)**

- Standard high short hood
- Based on as-built units produced from 1955 to 1957 (Phase II)
- Scale width hood with correct contours
- With or without dynamic brakes as appropriate
- Front & rear footboards or front plow & flat rear pilot as appropriate
- See-through steps
- Same powerful drive as WalthersProto® locos featuring:
  - Five-pole skew-wound motor
  - 14 to 1 gear ratio
  - Helical-cut gears for quiet operation & easy multiple unit operation
  - All-wheel drive and electrical pickup
  - Machined brass flywheel
  - Heavy die-cast metal chassis
- Constant & directional warm white LED headlights
- Correct size RP-25 metal wheels
- 21-pin DCC plug
- Molded drill starter points - add grab irons to your model easily with the GP9 Phase II Diesel Detail Kit (#910-258 sold separately)



910-20483

### Products Available



**Santa Fe**  
 910-20479 #702 Sound & DCC  
 910-10479 #733 Standard DC

910-20480 #714 Sound & DCC  
 910-10480 #748 Standard DC



**Chessie/Chesapeake & Ohio**  
 910-20481 #6082 Sound & DCC  
 910-10481 #6193 Standard DC

910-20482 #6189 Sound & DCC  
 910-10482 #6201 Standard DC

SCALE	EXPECTED DELIVERY	ANNOUNCED
H0	Spring 2023	November 2022

**LIMITED QUANTITY**  
ONE TIME RUN OF THESE ROADNUMBERS  
**ORDER NOW**

### Products Available



#### Detroit, Toledo & Ironton

• Add statement Perfect for use with DT&I --caboose 910-8712 and 8713  
910-20483 #980 Sound & DCC  
910-20484 #981 Sound & DCC  
910-10483 #984 Standard DC  
910-10484 #987 Standard DC



#### Western Maryland

910-20489 #31 Sound & DCC  
910-10489 #37 Standard DC  
910-20490 #35 Sound & DCC  
910-10490 #38 Standard DC



#### Northern Pacific

910-20485 #206 Sound & DCC  
910-10485 #210 Standard DC  
910-20486 #209 Sound & DCC  
910-10486 #211 Standard DC



#### Undecorated

910-10450 Standard DC \$159.98



#### Pennsylvania Railroad

910-20487 #7026 Sound & DCC  
910-10487 #7054 Standard DC  
910-20488 #7048 Sound & DCC  
910-10488 #7076 Standard DC



SCALE	EXPECTED DELIVERY	ANNOUNCED
H0	Winter 2023	December 2022

### 40' ACF Modernized Welded Boxcar w/8' Youngstown Door

\$31.98 ea

- Prototypes used in general freight service from late 1960s to 1980s
- Based on cars rebuilt to comply with new safety standards including:
  - No running boards or mounts on roof
  - Tall ladders and molded roof-mounted grab iron at B end (brake wheel end) only
  - Short ladders at A end
- Detailed 10-panel body
- 8' Youngstown doors
- Late Stanray 4/4 improved Dreadnaught ends
- Stanray diagonal panel roof
- Correct 33" turned metal RP-25 metal wheelsets
- Proto MAX™ metal knuckle coupler

**LIMITED QUANTITY**  
ONE TIME RUN OF THESE ROADNUMBERS  
**ORDER NOW**



910-45043

### Products Available



**Atlantic Coast Line**

910-45025 #24165    910-45026 #24170    910-45027 #24186



**Erie**

910-45037 #87075    910-45038 #87152    910-45039 #87205



**Detroit & Mackinac**

910-45031 #3118    910-45032 #3125    910-45033 #3149



**Rock Island\***

910-45043 #27202    910-45044 #27237    910-45045 #27330

\*Officially licensed by Rock Island Rail



SCALE	EXPECTED DELIVERY	ANNOUNCED
H0	Summer 2023	December 2022

**LIMITED QUANTITY**  
 ONE TIME RUN OF THESE ROADNUMBERS  
**ORDER NOW**

### 72' Centerbeam Flatcar

**\$34.98 ea**

- Prototypes in service from 1980s to the present
- "Opera Window" or standard centerbeam as appropriate
- Heavy die-cast metal underframe for excellent tracking
- Correct 36" RP-25 turned metal wheelsets
- Proto MAX™ metal knuckle coupler
- Model loaded cars in minutes with SceneMaster Wrapped Lumber Loads (#949-3121 series, each sold separately)



910-50724

### Products Available

#### Standard Centerbeam



#### Burlington Northern Santa Fe

910-50700 #559504    910-50701 #559520    910-50702 #559528    910-50703 #559535



#### Illinois Central

910-50712 #977047    910-50713 #977102    910-50714 #977198    910-50715 #977223



#### Duluth, Winnipeg & Pacific

910-50704 #626522    910-50705 #626626    910-50706 #626675    910-50707 #626756



#### McCloud River

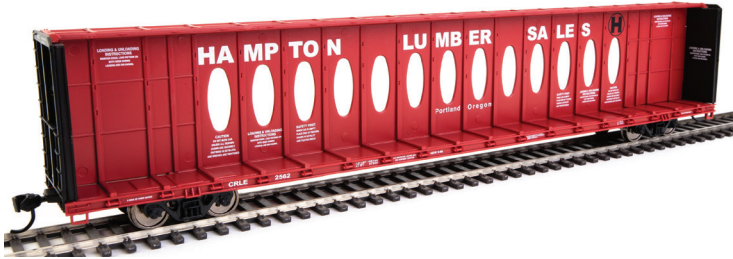
910-50716 #9110    910-50717 #9143    910-50718 #9229    910-50719 #9298

SCALE	EXPECTED DELIVERY	ANNOUNCED
H0	Summer 2023	December 2022

**LIMITED QUANTITY**  
 ONE TIME RUN OF THESE ROADNUMBERS  
**ORDER NOW**

## Products Available

### Opera Window Centerbeam



#### Hampton Lumber - CRLE

910-50708 #2562    910-50709 #2566    910-50710 #2575    910-50711 #2577



#### Trailer Train - TTZX

910-50724 #86288    910-50725 #86293    910-50726 #86323    910-50727 #86338



#### Northwestern Oklahoma Railroad - NOKL

910-50720 #732023    910-50721 #732090    910-50722 #732117    910-50723 #732193



#### Union Pacific<sup>1</sup>

910-50728 #273071    910-50729 #273097    910-50730 #273224    910-50731 #273236

<sup>1</sup>Union Pacific licensed product

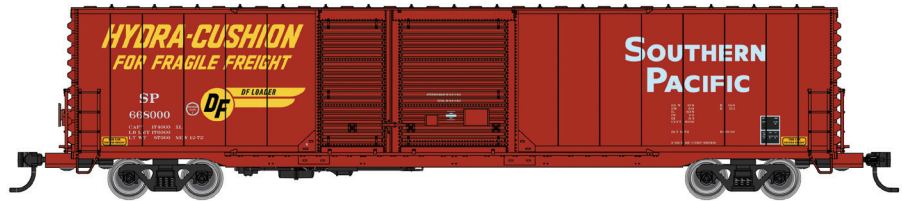
SCALE	EXPECTED DELIVERY	ANNOUNCED
H0	Spring 2023	December 2022

**LIMITED QUANTITY**  
ONE TIME RUN OF THESE ROADNUMBERS  
**ORDER NOW**

### 60' Pullman-Standard Auto Parts Boxcar (10' & 6' Doors)

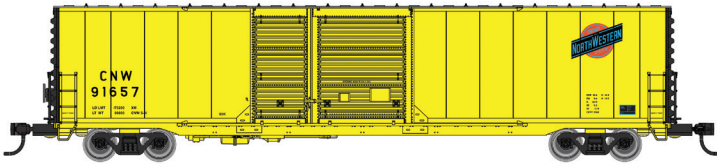
\$34.98 ea

- Updated tooling features new car sides - perfect for use with Walthers auto series cars & kits available separately!
- Based on cars with 10' & 6' side doors for easier loading/unloading
- Prototypes handled heavier loads such as engines, transmissions & brake drums
- In service from 1960s to 2000s
- 70-Ton Trucks
- Correct 33" RP-25 metal wheels
- Proto MAX™ metal knuckle couplers



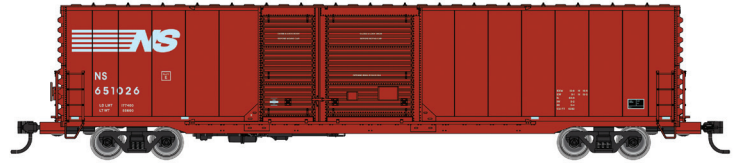
910-3240

#### Products Available



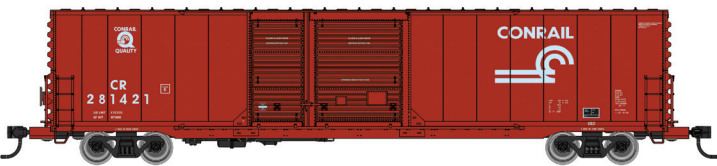
#### Chicago & North Western†

910-3225 #91657    910-3226 #91660    910-3227 #91680



#### Norfolk Southern

910-3234 #651026    910-3235 #651030    910-3236 #651045



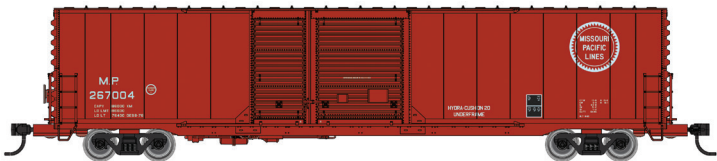
#### Conrail

910-3228 #281421    910-3229 #281444    910-3230 #281476



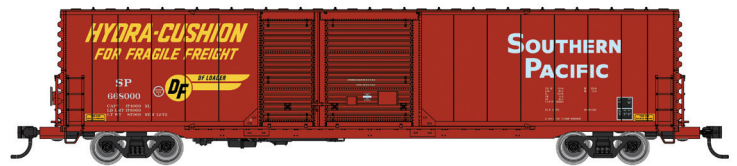
#### Southern Railway

910-3237 #43187    910-3238 #43230    910-3239 #43246



#### Missouri Pacific†

910-3231 #267004    910-3232 #267050    910-3233 #267099



#### Southern Pacific†

910-3240 #668000    910-3241 #668053    910-3242 #668092

†Union Pacific licensed product



SCALE	EXPECTED DELIVERY	ANNOUNCED
H0	Winter 2023	December 2022

**LIMITED QUANTITY**  
**ONE TIME RUN OF THESE ROADNUMBERS**  
**ORDER NOW**

### 59' Cylindrical Hopper

**\$34.98 ea**

- Model of a National Steel Car 4550 cubic foot car
- Fully assembled, ready to run
- Thousands used in North American grain & potash service from 1972 to the present
- Trough or round loading hatches as appropriate
- Four different car numbers for each roadname
- See-through running boards
- Detailed brake gear, roof hatches and end ladders
- Correct 36" RP-25 metal wheelsets
- Proto MAX™ metal knuckle couplers



910-7860

### Products Available



#### Canadian National

910-7836 #376510    910-7837 #376530    910-7838 #376537    910-7839 #376593



#### Canadian Wheat Board - CNWX

910-7844 #106343    910-7845 #106417    910-7846 #106463    910-7847 #106614



#### Canadian Pacific

910-7840 #384620    910-7841 #384883    910-7842 #384942    910-7843 #384730



#### Chicago & North Western<sup>1</sup>

910-7848 #460072    910-7849 #460083    910-7850 #460088    910-7851 #460094

<sup>1</sup>Union Pacific licensed product



SCALE	EXPECTED DELIVERY	ANNOUNCED
H0	Winter 2023	December 2022

**LIMITED QUANTITY**  
ONE TIME RUN OF THESE ROADNUMBERS  
**ORDER NOW**

### Products Available



**Potash Corporation of Saskatchewan - CGLX**

910-7852 #1658      910-7853 #1669      910-7854 #1678      910-7855 #1693



**Scoular - SCOX**

910-7860 #1511      910-7861 #1530      910-7862 #1536      910-7863 #1543



**National Railways of Mexico - NdeM**

910-7856 #118525      910-7857 #118562      910-7858 #118640      910-7859 #118703



**Toronto, Hamilton & Buffalo**

910-7864 #1505      910-7865 #1517      910-7866 #1520      910-7867 #1538

SCALE	EXPECTED DELIVERY	ANNOUNCED
H0	Winter 2023	December 2022

**LIMITED QUANTITY**  
 ONE TIME RUN OF THESE ROADNUMBERS  
**ORDER NOW**

### 53' Railgon Gondola

**\$31.98 ea**

- Based on Railgon 310000 series cars
- Used in nationwide pool service from 1980 to the present - many later leased and relettered by new operators
- Prototypes built tough for handling scrap, pipe, beams and similar large bulk loads
- 100-ton roller-bearing trucks
- Correct 36" RP-25 turned metal wheelsets
- Proto MAX™ metal knuckle couplers



910-6309

### Products Available



**Canadian National**

910-6289 #188220    910-6290 #188235    910-6291 #188243    910-6292 #188262



**Dakota, Minnesota & Eastern**

910-6297 #80075    910-6298 #80079    910-6299 #80091    910-6300 #80085



**COE Rail - CRLE**

910-6293 #3425    910-6294 #3428    910-6295 #3430    910-6296 #3435



**Railgon - GONX**

910-6301 #310165    910-6302 #310194    910-6303 #310243    910-6304 #310287  
 910-6305 #310388    910-6306 #310422    910-6307 #310561    910-6308 #310616

SCALE	EXPECTED DELIVERY	ANNOUNCED
H0	Winter 2023	December 2022

**LIMITED QUANTITY**  
 ONE TIME RUN OF THESE ROADNUMBERS  
**ORDER NOW**

### Products Available



**Milwaukee Road**

910-6309 #81040      910-6310 #81037      910-6311 #81119      910-6312 #81181



**Transportacion Ferroviaria Mexicana - TFM**

910-6313 #60491      910-6314 #60566      910-6315 #60584      910-6316 #60678



SCALE	EXPECTED DELIVERY	ANNOUNCED
H0	Spring 2023	December 2022

**LIMITED QUANTITY**  
 ONE TIME RUN OF THESE ROADNUMBERS  
**ORDER NOW**

### International Extended Wide-Vision Caboose

**\$44.98 ea**

- Correct X-panel roof - no running boards or end ladders
- Matches prototype dimensions:
  - 39' 1-1/4" over buffers
  - 14' 5-1/2" to top of cupola roof
  - 10' 7-1/2" wide at cupola
- Authentic extended wide vision cupola
- Detailed underbody with side-mount brake gear
- Scale thickness end railings
- Molded drill starter points for grab irons - easily added with Caboose Detail Kit (#910-201), sold separately
- Barber Swingmaster roller bearing trucks with 33" turned metal RP-25 wheelsets
- Proto MAX™ metal knuckle couplers



910-8718

### Products Available



**Santa Fe**  
 910-8708 #999775      910-8709 #999778



**Detroit, Toledo & Ironton**  
 • Perfect for use with WaltherMainline GP9 910-20483 to 20484 and 910-10483 to 10484  
 910-8714 #C-225  
 910-8715 #C-228



**Chesapeake & Ohio**  
 910-8710 #903202      910-8711 #903226



**Duluth, Missabe & Iron Range**  
 • Perfect for use with new WaltherProto SD9s (#920-41705 - 48708 series) & WaltherMainline 24' Minnesota Taconite Car 4-Packs (#910-58066 series), each sold separately  
 910-8714 #C-225  
 910-8715 #C-228



SCALE	EXPECTED DELIVERY	ANNOUNCED
H0	Spring 2023	December 2022

**LIMITED QUANTITY**  
 ONE TIME RUN OF THESE ROADNUMBERS  
**ORDER NOW**

### Products Available



#### Great Northern

• Perfect for use with new WalthersProto SD9s (#920-41709 - 48710 series) & WalthersMainline 24' Minnesota Taconite Car 4-Packs (#910-58078 - 58079), each sold separately

910-8716 #X-153  
 910-8717 #X-154



#### Northern Pacific

910-8718 #10401      910-8719 #10423



#### Soo Line

910-8720 #66      910-8721 #68

SCALE	EXPECTED DELIVERY	ANNOUNCED
H0	Spring 2023	December 2022

**LIMITED QUANTITY**  
ONE TIME RUN OF THESE ROADNUMBERS  
**ORDER NOW**

### International Wide-Vision Caboose

**\$44.98 ea**

- Prototypes in service from 1960s to 1980s - some used as shoving platforms today
- Wide-vision style cupola with two window styles
- Stanray overhanging diagonal panel roof
- Thin profile, see-through running boards
- Finely molded end ladders
- Scale thickness end railings
- Underbody toolbox as appropriate
- Molded drill starter points for grab irons - easily added with Caboose Detail Kit #910-201, sold separately
- Barber Swingmaster roller bearing trucks with 33" RP-25 turned metal wheelsets
- Proto MAX™ metal knuckle couplers



910-8777

### Products Available



#### Burlington Northern

- Perfect for use with new WaltherMainline 24' Minnesota Taconite Car 4-Packs (#910-58075 - 58077 series), each sold separately

910-8763 #10169  
910-8764 #10171



#### Great Northern

- Perfect for use with new WaltherProto SD9s (#920-41709 - 48710 series) & WaltherMainline 24' Minnesota Taconite Car 4-Packs (#910-58078 - 58079), each sold separately

910-8767 #X51  
910-8768 #X82



#### Detroit & Toledo Shore Line

910-8765 #120      910-8766 #121



#### Gulf, Mobile & Ohio

910-8769 #2991      910-8770 #2993

SCALE	EXPECTED DELIVERY	ANNOUNCED
H0	Spring 2023	December 2022

**LIMITED QUANTITY**  
ONE TIME RUN OF THESE ROADNUMBERS  
**ORDER NOW**

### Products Available



**Illinois Central Gulf**

910-8771 #199058

910-8772 #199059



**Norfolk Southern**

910-8775 #555538

910-8776 #555540



**Norfolk & Western**

910-8773 #518542

910-8774 #518556



**Northern Pacific**

910-8777 #1130

910-8778 #1140





SCALE	EXPECTED DELIVERY	ANNOUNCED
H0	Winter 2023	December 2022

## 97' Subdivided Warren Truss Single-Track Bridge

**\$39.98 ea**

- Part of the Cornerstone Engineered Bridge System
- Standard bridge design built worldwide to handle heavier trains
- Used where extra clearance is needed below
- Perfect as stand-alone or center span for longer bridges
- Clears double-stacks & similar tall cars - scale 22' (6.7m) clearance
- Fits steam-, diesel- & modern-eras
- Easily added to new or existing scenery
- Simulated steel construction with detailed girders, lattice work, rivets & three styles of bridge shoes
- Parts molded in light gray
- Use with Walther'sTrack Code 83 Bridge Track (948-83004) or Bulk Rail (#948-83000), both sold separately)
- *Shown assembled, painted and weathered by modeler.*



**97' Subdivided Warren Truss Single-Track Bridge Kit**  
 933-4511  
 Measures:  
 13-1/2 x 3-1/4 x 5-1/2" 34.2 x 8.2 x 13.9cm  
 (97 scale feet long)

### Steel Warehouse Kit

933-4080

Measures:

- Main Building: 14 x 9 x 5-1/2" 35.5 x 22.8 x 13.9cm
- Office: 4-3/4 x 5 x 2-1/4" 12 x 12.7 x 5.7cm



## Steel Warehouse

**\$79.98 ea**

- All-new contemporary building kit!
- Great stand-alone operation or support building for a larger industry
- Large "steel" main structure w/two rail & four truck docks w/doors & seals, truck entry door, large electric meter box, gas meter
- Detailed roof w/vents & heater stacks
- Modern "steel" office w/separate windows, doors, high-efficiency furnace inlet & outlet pipes, gas & electric meters
- Molded in light & dark gray
- Use alongside other Cornerstone Modern Industrial Park structures & accessories, each sold separately
- *Shown assembled, painted and weathered by modeler.*





SCALE	EXPECTED DELIVERY	ANNOUNCED
H0	Winter 2023	December 2022

## Ranch House with Attached 2-Car Garage

**\$44.98 ea**

- Perfect addition to H0 city or suburban subdivision
- Built by the thousands after WWII - still popular today!
- Typical of later construction w/attached two-car garage
- Includes 2 different front doors & picture windows for easy customizing
- Separate gas & electric meters, nonworking porch lights, modern mail box - all included
- Colorful printed curtains
- Molded in three colors with clear acetate
- Both options shown assembled, painted and weathered by modeler.

**1 HOUSE KIT / 2 ways to customize your build!**

Whichever style suits your layout, we've got you covered.



*Option shown with board and batten siding.*



*Option shown with clapboard siding.*

### **Ranch House with Attached 2-Car Garage Kit**

933-4155

Measures:

4 x 2-1/4 x 1-1/2" 10.1 x 5.7 x 3.8cm



SCALE	EXPECTED DELIVERY	ANNOUNCED
H0	Winter 2023	December 2022

## Craftsman Bungalow

**\$47.98 ea**

- All-new American home kit!
- Thousands built from 1900 - 1920s & still lived in today.
- Perfect for steam-, diesel- or contemporary-era city or small town
- Traditional 2-story "Craftsman" design seen all across North America
- Molded siding details & shake shingle siding on upper story
- Detailed dormer, front porch, nonworking lights, downspouts, gas & electric meters
- Molded in five colors of plastic
- Mix & match with American Bungalow (#933-3787), Modernized Bungalow (#933-3791) & Mission-style Bungalow to model an authentic neighborhood
- *Shown assembled, painted and weathered by modeler.*



**Craftsman Bungalow Kit**  
933-3797  
Measures:  
7 x 4-7/16 x 3-7/8" 17.7 x 4.4 x 9.8cm



SCALE	EXPECTED DELIVERY	ANNOUNCED
ALL	Winter 2023	December 2022

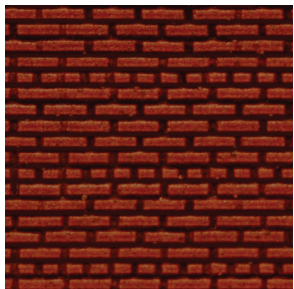


## Dark Red Flexible Brick Sheet 2-packs

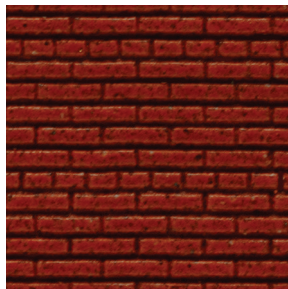
**\$21.98 ea**

- Perfect for modeling vintage sidewalks, station platforms, walls or streets
- Hand-cast in super-detailed flexible vinyl
- Easy to use, with peel & stick permanent adhesive
- Adheres to any flat, smooth surface.
- Easily cut with hobby knife or scissors
- Molded in base color - easily customized with water-based acrylics, sold separately
- Each sheet measures 3-3/4 x 12" 9.5 x 30.5cm.

### Brick Wall



214-8621 Small - For HO & N

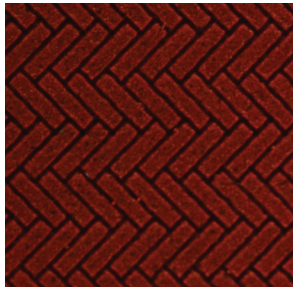


214-8623 Medium - For HO

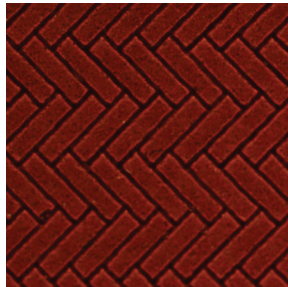


214-8625 Large - For HO, S & O

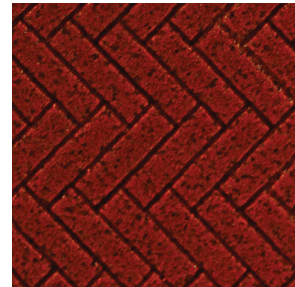
### Herringbone Brick



214-8661 Small - For HO & N

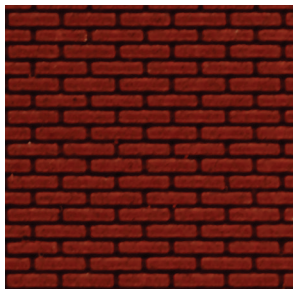


214-8663 Medium - For HO



214-8665 Large - For HO, S & O

### Brick Paver



214-8667 Small - For HO & N



214-8669 Medium - For HO



214-8671 Large - For HO, S & O

*Photos enlarged to show details.*



SCALE	EXPECTED DELIVERY	ANNOUNCED
H0	Winter 2023	December 2022

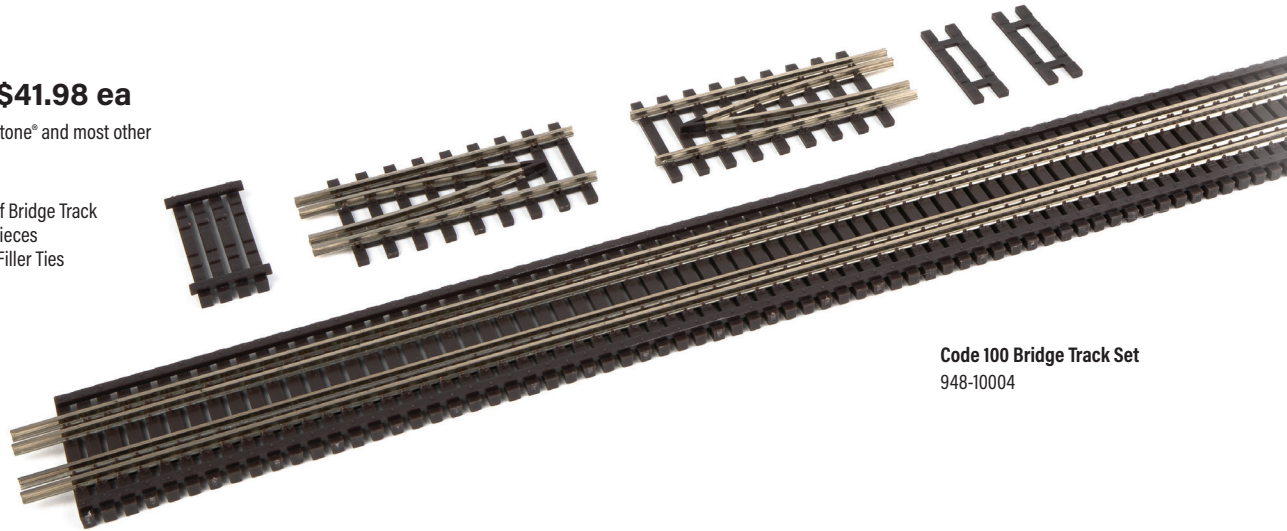
## WALTHERSTRACK™

### Code 100 Nickel Silver Bridge Track

- Models 150-pound rail used on high-speed & heavy traffic lines
- Thin profile ties in realistic dark brown with enhanced wood grain detail
- Fine profile molded spike & tie plate details on each tie
- Spike-mounting holes positioned next to the rail
- Molded starter points on underside of ties for fasteners
- Custom formulated nickel silver rail for outstanding electrical conductivity

#### Bridge Track Set \$41.98 ea

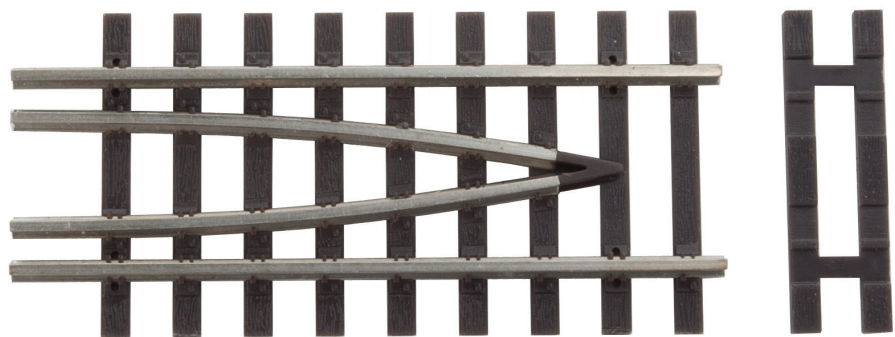
- NEW for Code 100 - use with Cornerstone® and most other H0 bridges, (sold separately)
- Complete set includes :
  - One 36" (.9m) section of Bridge Track
  - Two Bridge Track End Pieces
  - Two end piece "wood" Filler Ties



Code 100 Bridge Track Set  
948-10004

#### Bridge Track End Set \$11.98 ea

- Use with Code 100 Bridge Track Set #948-10004 (sold separately)
- Set includes:
  - Two Bridge Track End Pieces
  - Two end piece "wood" Filler Ties



Code 100 Bridge Track End Set  
948-10005