



THE RAPIDO GP38 LOCOMOTIVE

HOBBYTYME
Exclusive!

HO
SCALE



PRELIMINARY ARTWORK AND DRAWINGS. SUBJECT TO CHANGES OR REVISIONS BEFORE PRODUCTION.

Aberdeen, Carolina & Western

Road # Item # (DC/DCC/Sound)

2077 38537



PRELIMINARY ARTWORK AND DRAWINGS. SUBJECT TO CHANGES OR REVISIONS BEFORE PRODUCTION.

Aberdeen, Carolina & Western

Road # Item # (DC/DCC/Sound)

3802 38538



PRELIMINARY ARTWORK AND DRAWINGS. SUBJECT TO CHANGES OR REVISIONS BEFORE PRODUCTION.

Aberdeen, Carolina & Western

Road # Item # (DC/DCC/Sound)

3803 38539

***NOTE:**

All artwork is subject to revisions before final production. Factory painted samples are subject to revisions before final assembly.

Reserve Yours From:

HOBBYTYME

MSRP
w/Sound **\$349.95** USD



CANADA: 500 ALDEN ROAD • UNIT 21 • MARKHAM • ONTARIO • L3R 5H5
USA: PO BOX 796 • HIGGANUM • CONNECTICUT • 06441
Tel. 905.474.3314. Fax. 905.474.3325. Visit. www.rapidotrains.com

RAPIDO



NSC 3294 CU. FT. CP MECHANICAL REEFER



3D render shown, subject to revisions

SOUND AVAILABLE!

Rapido is pleased to offer another ULTIMATELY CANADIAN freight car in HO Scale!

This is the NSC 3294 cu.ft. mechanical reefer, built exclusively for the Canadian Pacific Railway. Put aside all of those American-style reefer imitations! This is the real deal, truly-Canadian style reefer! Built in 1968, these mechanical reefers served the frozen foods industries from the late 1960s through the year 2002. The majority of these cars retained their CP Rail "Red Script" schemes though their entire service lives, while some were repainted into the classic Multimark scheme. Whether you need them for the meat industry or fresh produce markets, these cars will look right at home mixed into a consist or being spotted at that ever-busy packing plant.

But wait, there's more! Do you like ambient reefer sounds? This model features an option for sound with our Plug n Play Sound Board, sold separately. Just plug in and hear the difference!

The Rapido NSC 3294 CP Mechanical Reefer features:

- Separate grab irons installed at the factory
- Wire stirrup steps
- 70-ton Barber S-2 trucks, with electrical pick up metal wheels
- Rapido Semi Scale metal knuckle couplers
- Drawn from original blueprints and drawings
- Separate door posts, door latches and coupler cut levers
- Fully-detailed underframe, including piping and mechanical equipment
- Optional sound unit available for easy installation!

MSRP

Single **\$54.95** USD
6-pack **\$329.70** USD

Add-on Reefer Sound Module **\$19.95** USD

Single **\$64.95** CAD
6-pack **\$389.70** CAD

Add-on Reefer Sound Module **\$24.95** CAD

Note: All schemes are available in 6-pack cases, as well as single cars. Car numbers for single orders will be randomly selected from the listed road numbers. Unnumbered cars are available by special request only.

**Order Deadline:
September 15th, 2023**



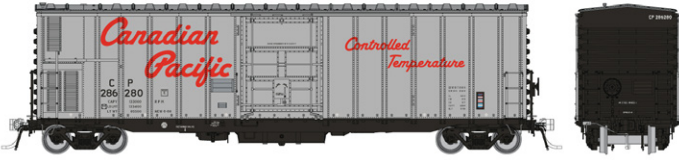
CANADA: 500 ALDEN ROAD • UNIT 21 • MARKHAM • ONTARIO • L3R 5H5
USA: PO BOX 796 • HIGGANUM • CONNECTICUT • 06441
Tel. 905.474.3314. Fax. 905.474.3325. Visit. www.rapidotrains.com

RAPIDO



NSC 3294 CU. FT. CP MECH REEFER

DEALER
NAME



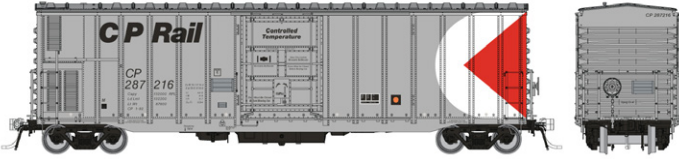
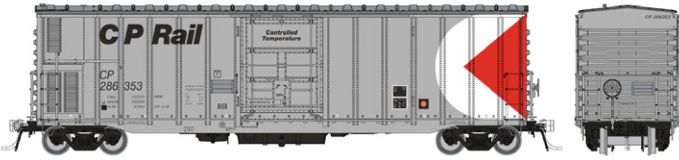
Canadian Pacific - Script Logo

Car Numbers: 286280, 286307, 286320, 286346, 286365, 286401

- Item # 150001 - 6-pack
- Item # 150001A - Single Car

Car Numbers: 286298, 286311, 286333, 286359, 286388, 286413

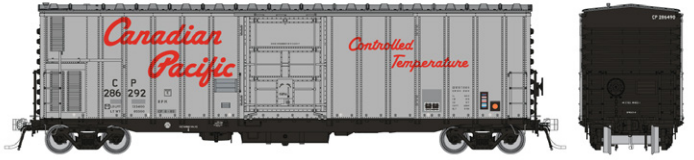
- Item # 150002 - 6-pack
- Item # 150002A - Single Car



Canadian Pacific - Multimark (Repaint)

Car Numbers: 286353, 286381, 287216, 287217, 287225, 287229

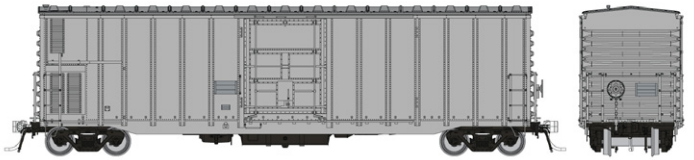
- Item # 150003 - 6-pack
- Item # 150003A - Single Car



Canadian Pacific - Script Logo (Late)

Car Numbers: 286292, 286313, 286334, 286339, 286363, 286387

- Item # 150004 - 6-pack
- Item # 150004A - Single Car



Painted/Unlettered

- Item # 150099 - Single Car

MSRP

Single **\$54.95** USD
6-pack **\$329.70** USD

Add-on Reefer Sound Module **\$19.95** USD

Single **\$64.95** CAD
6-pack **\$389.70** CAD

Add-on Reefer Sound Module **\$24.95** CAN

Early sample shown, subject to revisions



Order Deadline: September 15th, 2023



CANADA: 500 ALDEN ROAD • UNIT 21 • MARKHAM • ONTARIO • L3R 5H5
USA: PO BOX 796 • HIGGANUM • CONNECTICUT • 06441
Tel. 905.474.3314. Fax. 905.474.3325. Visit. www.rapidotrains.com

RAPIDO



H1a/b HUDSON

ICONS OF CANADIAN STEAM
· RAPIDO TRAINS INC. ·

PRE-ORDER DEADLINE:
SEPTEMBER 15TH, 2023





H1a/b HUDSON

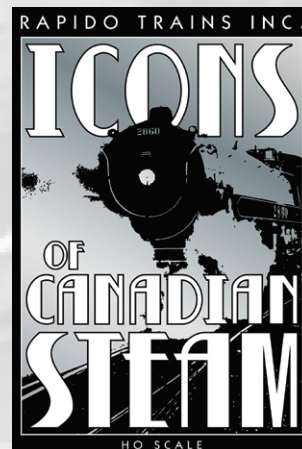
ICONS OF CANADIAN STEAM
RAPIDO TRAINS INC.

Designed by Chief of Motive Power & Rolling Stock Henry Blane Bowen, Canadian Pacific's H1a and H1b class 4-6-4 Hudson locos were state-of-the-art steam power when delivered. A total of twenty locos were delivered in two batches of ten each. The first batch, numbers #2800-2809, were delivered in 1929 and classified H1a. The second ten, numbers #2810-2819, were delivered in 1930 and were classified H1b. These locomotives were used on mainline passenger trains across the CP's system. So success full were they that CP used their design as the basis for its "Royal Hudsons" seven years later, which were designated as class H1c through H1d. Both classes survived intact until the end of steam, with the first retirements not coming until 1957.

Rapido's H1a/b HO scale models are based on our hugely successful Royal Hudson. We are offering several different detail variations which allow you to model these locos at any point throughout their service life, including the preserved #2816.

Features include:

- Designed from prototype drawings and measurements
- Road number specific factory applied details for each unit
- Separately applied metal hand rails and grabs
- Blackened wheels and driving rods
- Correct cylinders and valve gear
- Smooth-running drive train
- Accurate and complete piping, under body and tender details
- Correct coal tenders for regular service units
- Correct oil tender for the post-restoration version of #2816
- Early or later style walkways
- "Elephant Ear" smoke deflectors on correctly numbered models
- "Flickering" fire box in detailed cab (DCC controlled)
- Working head light, classification lights, interior cab light and back up lights (DCC controlled)
- Metal Macdonald-Cartier Knuckle Couplers mounted at correct height
- DCC sound version includes synchronized chuff, accurate whistles, bells, air pumps, generator, safety valves and many other effects! (Not all sound features of DCC sound units will function in DC mode)
- Accurate paint and decoration
- 22" Minimum radius



PRE-ORDER DEADLINE:
SEPTEMBER 15TH, 2023

US MSRP

\$599.95 DC/DCC-ready
\$699.95 DC/DCC/Sound

Canadian MSRP

\$649.95 DC/DCC-ready
\$749.95 DC/DCC/Sound



CANADA: UNIT 21 • 500 ALDEN ROAD • MARKHAM • ONTARIO • L3R 5H5
USA: PO BOX 796 • HIGGANUM • CONNECTICUT • 06441
Tel. 1-855-LRC-6917 Fax. 1-905-474-3325 Website www.rapidotrains.com

Customer Name _____
Phone Number _____

RAPIDO

HIa/b HUDSON

ICONS OF CANADIAN STEAM
- RAPIDO TRAINS INC. -

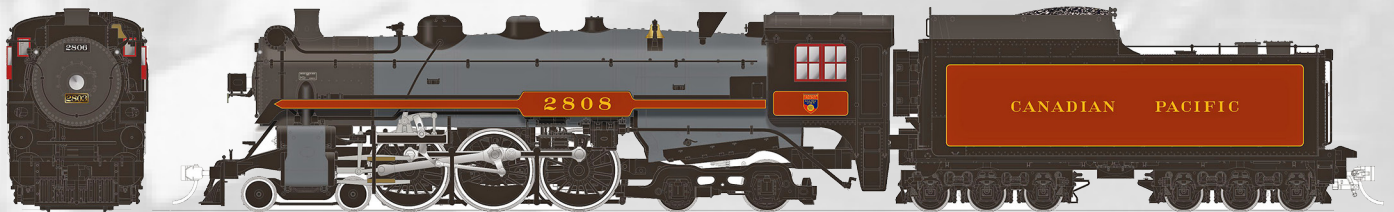


Canadian Pacific - Delivery

DC Item	DCC Item	Class	Number	Options
<input type="checkbox"/> 601001	<input type="checkbox"/> 601501	HIa	2803	Early walkway
<input type="checkbox"/> 601002	<input type="checkbox"/> 601502	HIb	2810	Early walkway
<input type="checkbox"/> 601003	<input type="checkbox"/> 601503	HIb	No #	Early walkway



DC Item	DCC Item	Class	Number	Options
<input type="checkbox"/> 601004	<input type="checkbox"/> 601504	HIa	2800	Early walkway w/smoke deflectors
<input type="checkbox"/> 601005	<input type="checkbox"/> 601505	HIb	2816	Early walkway w/smoke deflectors



Canadian Pacific - "Spans the World"

DC Item	DCC Item	Class	Number	Options
<input type="checkbox"/> 601006	<input type="checkbox"/> 601506	HIa	2808	Late walkway
<input type="checkbox"/> 601007	<input type="checkbox"/> 601507	HIb	2814	Late walkway
<input type="checkbox"/> 601008	<input type="checkbox"/> 601508	HIb	2818	Late walkway

US MSRP
\$599.95 DC/DCC-ready
\$699.95 DC/DCC/Sound

Canadian MSRP
\$649.95 DC/DCC-ready
\$749.95 DC/DCC/Sound

PRE-ORDER DEADLINE:
SEPTEMBER 15TH, 2023



CANADA: UNIT 21 • 500 ALDEN ROAD • MARKHAM • ONTARIO • L3R 5H5
USA: PO BOX 796 • HIGGANUM • CONNECTICUT • 06441
Tel. 1-855-LRC-6917 Fax. 1-905-474-3325 Website www.rapidotrains.com

Customer Name _____
Phone Number _____

RAPIDO

H1a/b HUDSON

ICONS OF CANADIAN STEAM
- RAPIDO TRAINS INC. -



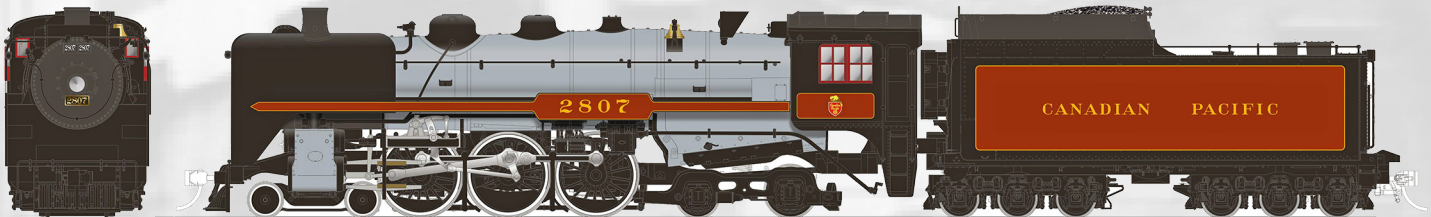
Canadian Pacific - "Spans the World"

DC Item	DCC Item	Class	Number	Options
<input type="checkbox"/> 601009	<input type="checkbox"/> 601509	H1b	2815	Late walkway w/smoke deflectors
<input type="checkbox"/> 601010	<input type="checkbox"/> 601510	H1b	2817	Late walkway w/smoke deflectors



Canadian Pacific - Beaver shield

DC Item	DCC Item	Class	Number	Options
<input type="checkbox"/> 601011	<input type="checkbox"/> 601511	H1a	2804	Late walkway
<input type="checkbox"/> 601012	<input type="checkbox"/> 601512	H1a	2806	Late walkway
<input type="checkbox"/> 601013	<input type="checkbox"/> 601513	H1a	2809	Late walkway
<input type="checkbox"/> 601014	<input type="checkbox"/> 601514	H1b	No #	Late walkway



Canadian Pacific - Beaver shield

DC Item	DCC Item	Class	Number	Options
<input type="checkbox"/> 601015	<input type="checkbox"/> 601515	H1b	2807	Late walkway w/smoke deflectors

US MSRP
\$599.95 DC/DCC-ready
\$699.95 DC/DCC/Sound

Canadian MSRP
\$649.95 DC/DCC-ready
\$749.95 DC/DCC/Sound

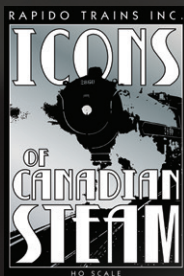
PRE-ORDER DEADLINE:
SEPTEMBER 15TH, 2023



CANADA: UNIT 21 • 500 ALDEN ROAD • MARKHAM • ONTARIO • L3R 5H5
USA: PO BOX 796 • HIGGANUM • CONNECTICUT • 06441
Tel. 1-855-LRC-6917 Fax. 1-905-474-3325 Website www.rapidotrains.com

Customer Name _____
Phone Number _____

RAPIDO



2816

PRE-ORDER DEADLINE:
SEPTEMBER 15TH, 2023

Prototype photo courtesy of Adam Meeks.
Pre-production sample and preliminary art subject to revision.

Originally one of the second batch of Hudsons delivered, Canadian Pacific H1b #2816 became a celebrity when it was restored back to operation by CP in 2001. #2816 is the only surviving member of the H1a or H1b classes, having originally been preserved at Steamtown in the US United States before being purchased and restored by CP in 1998.

During its post-restoration career #2816 gained the nickname the “Empress” as it hauled excursions across Canada and into the US. It even became a film star, garnering a leading roll in the spectacular IMAX film “Rocky Mountain Express” in 2011.

As part of its restoration #2816 was converted to burn oil and was paired with the an original oil tender from a Royal Hudson and it was converted to burn oil. A radio and ditch lights were fitted to bring 2816 into compliance with modern standards, and a second generator was added to help power these new devices. Finally, a second whistle was added alongside of the stack.

Developed with the help and guidance of CP’s steam restoration team, Rapido’s HO scale model of #2816 will include the correct oil tender, working ditch lights, and the additional details added to the loco for its excursion working. The loco will be sold in a high-quality custom wood display box. It will be a fantastic addition to any collection!



Canadian Pacific - 2816 excursion

DCC Item Class Number Options

601516 H1b 2816 Ditch lights, oil tender

US MSRP

\$749.95 DC/DCC/Sound

Canadian MSRP

\$799.95 DC/DCC/Sound

**HO
SCALE**

GE C30-7



Kevin Eudaly collection

Rapido is happy to announce the next in our series of classic General Electric locomotives, the C30-7 in HO scale.

The C30-7 was General Electric's improvement of the U30C locomotive, featuring a 16-cylinder 3,000 horsepower diesel engine. Built between September 1976 and May 1986, over 1100 units were produced for many of the Class I railroads across the United States for use primarily in heavy-haul freight. A fair number would go on to have extended careers with both short/regional lines and private industrial railroads, owing to the locomotives reliability and pulling power.

The C30-7 later gave way to the similar C36-7, as well as various unique models such as the Conrail C30-7A and the BC Rail C36-8m, rebuilt from former Conrail C30-7s.

Rapido's new HO scale C30-7 features:

- Correct nose and body contours
- High or Low headlights, as appropriate
- Correct Rockwell or Adirondack trucks, as appropriate
- New traction motor casings details
- Heavy, die-cast weight for heavy hauling
- 5-pole motor with dual flywheels
- Operating headlights and rear lights
- Operating roof-top beacons and class lights, where applicable
- Detailed underbody piping and conduit
- Separate grab irons and handrails
- Sound-equipped units feature ESU Loksound V5 decoders



MSRP

DC/SILENT

\$239.95 (USD) \$269.95 (CAD)

DCC/SOUND

\$349.95 (USD) \$379.95 (CAD)

ORDER DEADLINE AND DELIVERY SCHEDULE TBA

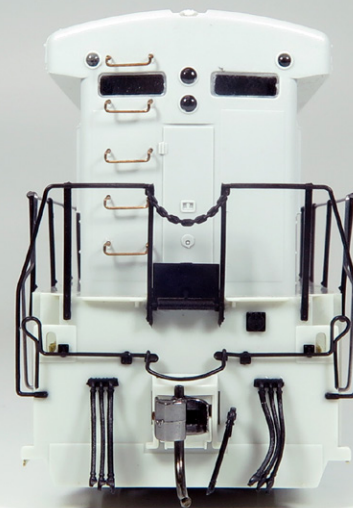
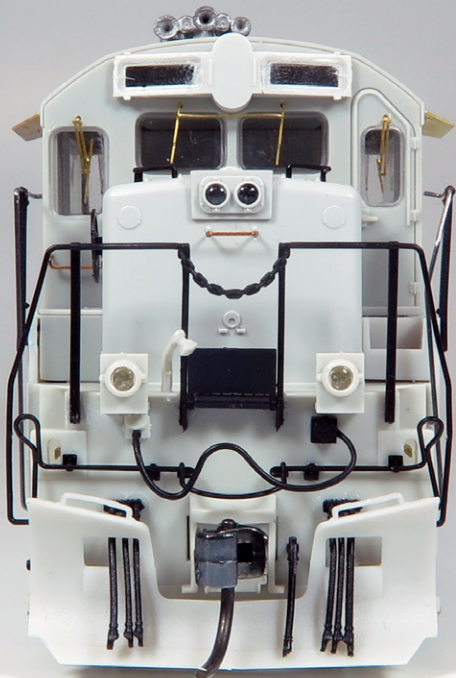


CANADA: 500 ALDEN ROAD • UNIT 21 • MARKHAM • ONTARIO • L3R 5H5
USA: PO BOX 796 • HIGGANUM • CONNECTICUT • 06441
Tel. 905.474.3314. Fax. 905.474.3325. Visit. www.rapidotrains.com

RAPIDO

**HO
SCALE**

GE C30-7 BY RAPIDO



First test samples.
Subject to refinements and additional detail variations

DC/SILENT

\$239.95 (USD) \$269.95 (CAD)

DCC/SOUND

\$349.95 (USD) \$379.95 (CAD)

ORDER DEADLINE

TBD



CANADA: 500 ALDEN ROAD • UNIT 21 • MARKHAM • ONTARIO • L3R 5H5
USA: PO BOX 796 • HIGGANUM • CONNECTICUT • 06441
Tel. 905.474.3314. Fax. 905.474.3325. Visit. www.rapidotrains.com

RAPIDO



GE C30-7 BY RAPIDO

DEALER NAME:



Atchison, Topeka & Santa Fe (Early)

Road #	Item # (DC/Silent)	Item # (DC/DCC/Sound)
8012	42001 <input type="text"/>	42501 <input type="text"/>
8025	42002 <input type="text"/>	42502 <input type="text"/>
8039	42003 <input type="text"/>	42503 <input type="text"/>
8051	42004 <input type="text"/>	42504 <input type="text"/>



Burlington Northern (Early)

Road #	Item # (DC/Silent)	Item # (DC/DCC/Sound)
5514	42005 <input type="text"/>	42505 <input type="text"/>
5526	42006 <input type="text"/>	42506 <input type="text"/>
5533	42007 <input type="text"/>	42507 <input type="text"/>
5546	42008 <input type="text"/>	42508 <input type="text"/>



Conrail

Road #	Item # (DC/Silent)	Item # (DC/DCC/Sound)
6600	42009 <input type="text"/>	42509 <input type="text"/>
6603	42010 <input type="text"/>	42510 <input type="text"/>
6605	42011 <input type="text"/>	42511 <input type="text"/>
6608	42012 <input type="text"/>	42512 <input type="text"/>



CSX Transportation (YN2)

Road #	Item # (DC/Silent)	Item # (DC/DCC/Sound)
7029	42013 <input type="text"/>	42513 <input type="text"/>
7036	42014 <input type="text"/>	42514 <input type="text"/>
7041	42015 <input type="text"/>	42515 <input type="text"/>
7047	42016 <input type="text"/>	42516 <input type="text"/>



Ferrocarriles Nacionales de México (Early)

Road #	Item # (DC/Silent)	Item # (DC/DCC/Sound)
11002	42017 <input type="text"/>	42517 <input type="text"/>
11014	42018 <input type="text"/>	42518 <input type="text"/>
11017	42019 <input type="text"/>	42519 <input type="text"/>
11025	42020 <input type="text"/>	42520 <input type="text"/>



Norfolk & Western (Black)

Road #	Item # (DC/Silent)	Item # (DC/DCC/Sound)
8020	42021 <input type="text"/>	42521 <input type="text"/>
8044	42022 <input type="text"/>	42522 <input type="text"/>
8059	42023 <input type="text"/>	42523 <input type="text"/>
8068	42024 <input type="text"/>	42524 <input type="text"/>



Norfolk Southern

Road #	Item # (DC/Silent)	Item # (DC/DCC/Sound)
8008	42025 <input type="text"/>	42525 <input type="text"/>
8014	42026 <input type="text"/>	42526 <input type="text"/>
8032	42027 <input type="text"/>	42527 <input type="text"/>
8049	42028 <input type="text"/>	42528 <input type="text"/>



Union Pacific (Early)

Road #	Item # (DC/Silent)	Item # (DC/DCC/Sound)
2415	42029 <input type="text"/>	42529 <input type="text"/>
2419	42030 <input type="text"/>	42530 <input type="text"/>
2422	42031 <input type="text"/>	42531 <input type="text"/>
2429	42032 <input type="text"/>	42532 <input type="text"/>

DC/SILENT**\$239.95 (USD) \$269.95 (CAD)****DCC/SOUND****\$349.95 (USD) \$379.95 (CAD)****ORDER DEADLINE****TBD**

CANADA: 500 ALDEN ROAD • UNIT 21 • MARKHAM • ONTARIO • L3R 5H5
 USA: PO BOX 796 • HIGGANUM • CONNECTICUT • 06441
 Tel. 905.474.3314. Fax. 905.474.3325. Visit. www.rapidotrains.com

RAPIDO

F30 50' FLAT CARS

NEW RUN! **HO SCALE**



Rapido Trains Inc. is excited to announce a new run of our popular HO scale F30 flat cars, now with new variations!

The Pennsylvania Railroad's class F30A flat cars were one of the most numerous classes of flat cars on that railroad with 1500 being built between 1933 and 1934. The cars were so successful that the PRR built another 250 nearly identical copies in 1951, classified as F30D.

Starting in 1954, the Pennsy converted many F30D flat cars into early piggyback service cars. These cars received perforated side rub rails, end loading ramps, and four side posts.

Eighty-six cars were transferred to the new Trailer Train Company (TTX) between 1957 and 1958. These received additional upgrades in the form of ACF trailer hitches, revised side rails, and upgraded end ramps. The TTX cars also received roller bearing conversions on their trucks. These cars were used by TTX into the 1980s, many being upgraded with full roller bearing trucks and some even painted in TTX's yellow scheme.

The PRR utilized a massive one-piece steel casting for these F30 flat cars, and that sturdy construction meant that many have lasted an incredibly long time. In fact, several ex-TTX cars were purchased by BN and converted to crosstie-cars, with most still in service with BNSF today!

In this release we offer the F30 in several flavors: general service flat cars, piggyback flats with appropriate trailers, BNSF crosstie cars, and Conrail camp train work flats, complete with camp trailers!

All of Rapido's F30 Flat Cars Feature:

- Die-cast chassis and deck for optimum weight
- Correct trucks (PRR 2E-F10, roller bearing converted or full roller bearing trucks)
- Turned metal wheels
- Rapido's semi-scale couplers
- Full brake rigging
- Separate grab irons

Rapido's F30D Flat Cars Feature

- Correct piggy-back details (Class F30D, F30G)
- Trailer load with random, decorated trailers
- Six car numbers per scheme

Rapido's F30 Camp Cars Feature

- All-new camp trailer loads in four styles
- End railings and platforms
- Photetched details
- Multiple car numbers per scheme

Rapido's F3D Tie Cars Feature

- New deck
- All-new tie rack
- Concrete tie load
- Six car numbers per scheme



CANADA: UNIT 21 • 500 ALDEN ROAD • MARKHAM • ONTARIO • L3R 5H5
USA: PO BOX 796 • HIGGANUM • CONNECTICUT • 06441
Tel. 1-855-LRC-6917 Fax. 1-905-474-3325 Website www.rapidotrains.com

Store Name _____
Phone Number _____

RAPIDO

F30A 50' MOW FLAT AND CAMP CARS

Conrail (and other railroads) mounted pre-fabricated "vans" on flat cars to house tack workers. Several common styles of van were built to serve the various needs of the work crews. Sleeping quarters were most common, but office and dining configurations were common sights in most work trains. These "Camp Trains" were common sights on Conrail and still on Norfolk Southern.

Rapido's camp cars are available in four different body styles: sleeper, diner, kitchen and office. In addition to vans mounted on F30A flat cars we offer each style van separately. They are perfect offices for yards, engine terminals, construction sites, in fact all sorts of applications! Separate vans are painted in appropriate colors but are unlettered.



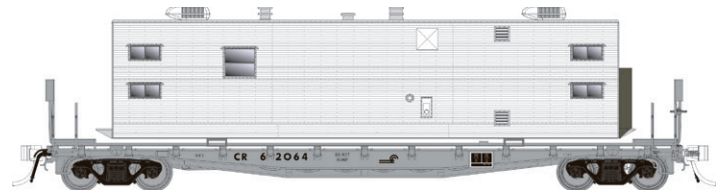
HO Conrail 50' Flat Car w/Camp Vans 3-Pack

Item	Description
<input type="checkbox"/> 138101	3-Pack Includes Office, Diner and Kitchen Vans Cars: #62204, 62893, 62954

CAMP CARS

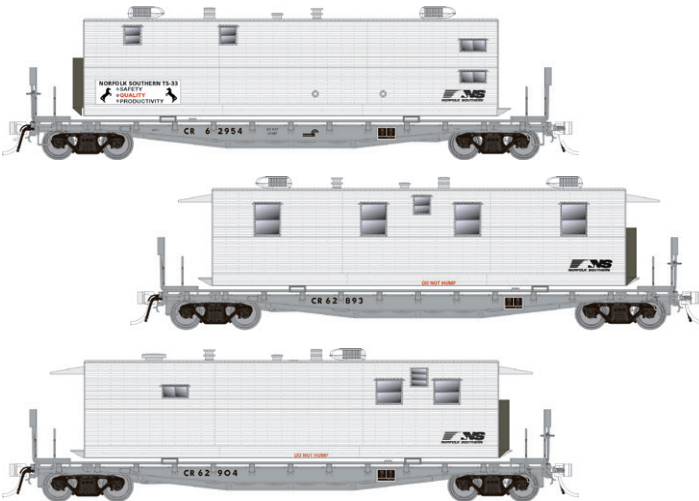
\$69.95 (SINGLE)
\$199.95 (3-PACK) \$399.95 (6-PACK)
 US MSRP

\$84.95 (SINGLE)
\$249.95 (3-PACK) \$499.95 (6-PACK)
 CANADIAN MSRP



HO Conrail 50' Flat Car w/Sleeper Van

Item	Description
<input type="checkbox"/> 138102	6-Pack
<input type="checkbox"/> 138102A	Single Car Cars: #62064, 62089, 62089, 62109, 62124, 62751 Sleeper



HO NS 50' Flat Car w/Camp Van 3-Pack

Item	Description
<input type="checkbox"/> 138104	3-Pack Includes Office, Diner and Kitchen Vans Cars: #62879, 62893, 62904



HO Conrail F30A MOW with Deck Rails

Includes new etched metal deck with rails for speeders, ditchers, spike pullers, Hi-Rails etc.

Item	Description
<input type="checkbox"/> 138103	6-Pack
<input type="checkbox"/> 138103A	Single Car Cars: #58704, 58512, 58709, 58717, 58721, 58723,

\$54.95 (SINGLE) \$329.70 (6-PACK)
 US MSRP

\$64.95 (SINGLE) \$389.70 (6-PACK)
 CANADIAN MSRP



HO NS 50' Flat Car w/Sleeper Van

Item	Description
<input type="checkbox"/> 138105	6-Pack
<input type="checkbox"/> 138105A	Single Car Cars: #62153, 62304, 62126, 62647, 62756, 62956

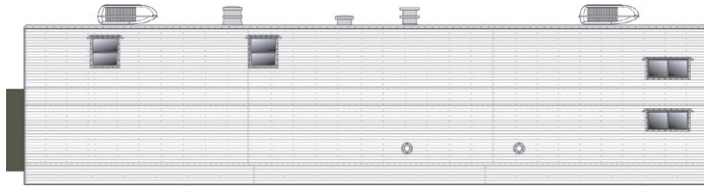


CANADA: UNIT 21 • 500 ALDEN ROAD • MARKHAM • ONTARIO • L3R 5H5
 USA: PO BOX 796 • HIGGANUM • CONNECTICUT • 06441
 Tel. 1-855-LRC-6917 Fax. 1-905-474-3325 Website www.rapido trains.com

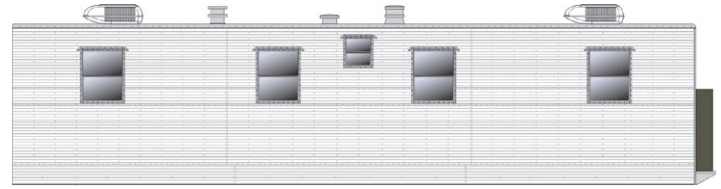
Store Name _____
 Phone Number _____

RAPIDO

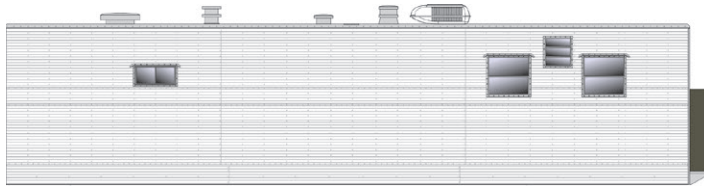
MOW CAMP TRAILERS



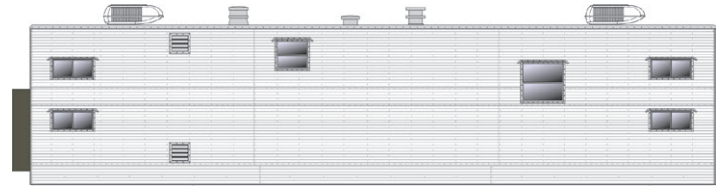
Item Description
 138201 Office Trailer



Item Description
 138203 Dining Trailer



Item Description
 138202 Kitchen Trailer



Item Description
 138204 Sleeper Trailer

\$24.95 US MSRP

\$29.95 CANADIAN MSRP

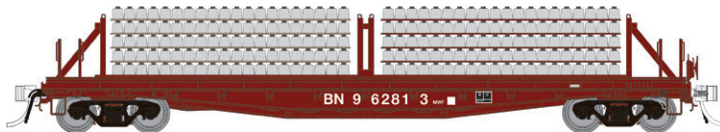
F30D 50' TIE SERVICE FLAT CARS W/LOADS

The massive one-piece steel casting used in their construction has meant that many have lasted an incredibly long time. Several ex-TTX cars were purchased by BN and converted to crosstie-cars, with most still in service with BNSF today!

Our tie car model is based on these BN/BNSF conversions and features a new deck, tie rack and decorated concrete crosstie load.



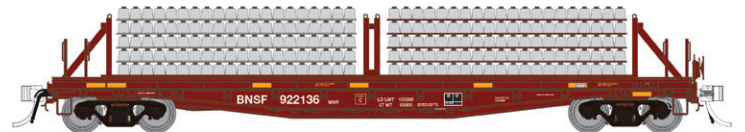
Matt Gentry Photo



BN - F30D Tie Car

Item Description
 138301 6-Pack
 138301A Single Car
 Cars: #962813, 962835, 962837, 962847, 962863, 962870

\$64.95 (SINGLE)
\$389.70 (6-PACK)
 US MSRP



BNSF - F30D Tie Car

Item Description
 138302 6-Pack
 138302A Single Car
 Cars: #922136, 922136, 922206, 922151, 922183, 922191

\$79.95 (SINGLE)
\$479.70 (6-PACK)
 CANADIAN MSRP



CANADA: UNIT 21 • 500 ALDEN ROAD • MARKHAM • ONTARIO • L3R 5H5
 USA: PO BOX 796 • HIGGANUM • CONNECTICUT • 06441
 Tel. 1-855-LRC-6917 Fax. 1-905-474-3325 Website www.rapidotrains.com

Store Name _____
 Phone Number _____

RAPIDO

F30 50' FLAT CARS PIGGYBACK SERVICE



Pennsylvania Delivery - F30D

Item	Description
<input type="checkbox"/> I38016	6-Pack
<input type="checkbox"/> I38016A	Single Car

Cars: #475303, 475308, 475318, 475331, 475343, 475349



TTX Late Red - F30D

Item	Description
<input type="checkbox"/> I38018	6-Pack
<input type="checkbox"/> I38018A	Single Car

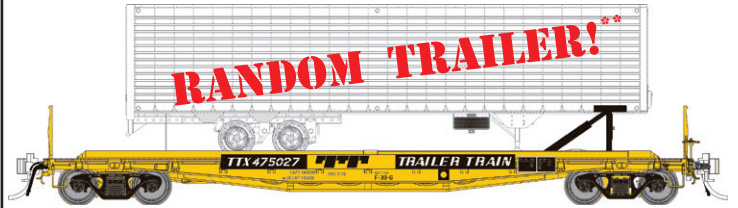
Cars: #475058, 475080, 475082, 475116, 475202, 475204



TTX Early Red - F30D

Item	Description
<input type="checkbox"/> I38017	6-Pack
<input type="checkbox"/> I38017A	Single Car

Cars #475008, 475032, 475048, 475062, 475071, 475083



TTX Yellow - F30D

Item	Description
<input type="checkbox"/> I38019	6-Pack
<input type="checkbox"/> I38019A	Single Car

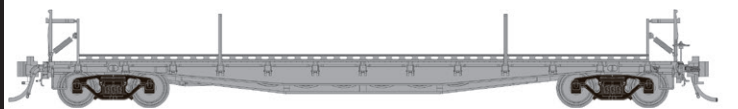
Cars #475027, 475152, 475264, 475230, 475262, 475264

** Trailers will be chosen at random from appropriate schemes.

* Decorated cars have six individual car numbers per paint scheme. These will be available as a six pack (six individual cars shrink wrapped together) and are **easily broken up for individual sale**.

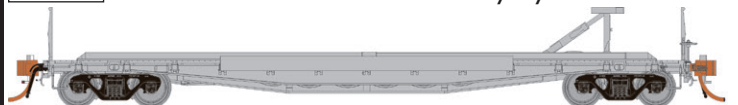
\$79.95 (SINGLE)
\$479.70 (6-PACK)
US MSRP

\$99.95 (SINGLE)
\$599.70 (6-PACK)
CANADIAN MSRP



Undecorated w/o Trailer

Item	Description
<input type="checkbox"/> I38098	F30D TOFC Flat Car early style



Item	Description
<input type="checkbox"/> I38099	F30D TOFC Flat Car late style

\$54.95 US MSRP - \$64.95 CANADIAN MSRP



CANADA: UNIT 21 • 500 ALDEN ROAD • MARKHAM • ONTARIO • L3R 5H5
USA: PO BOX 796 • HIGGANUM • CONNECTICUT • 06441
Tel. 1-855-LRC-6917 Fax. 1-905-474-3325 Website www.rapidotrains.com

Store Name _____
Phone Number _____

RAPIDO

F30 50' FLAT CARS GENERAL SERVICE



Pennsylvania Delivery

Item	Description
<input type="checkbox"/> I38011	6-Pack
<input type="checkbox"/> I38011A	Single Car

Cars: #474261, 474275, 474322, 474805, 475001, 475036



Pennsylvania 1950s

Item	Description
<input type="checkbox"/> I38012	6-Pack
<input type="checkbox"/> I38012A	Single Car

Cars: #474270, 474262, 474302, 474904, 475015, 475203



Pennsylvania 1960s

Item	Description
<input type="checkbox"/> I38013	6-Pack
<input type="checkbox"/> I38013A	Single Car

Cars: #474271, 474278, 474319, 474563, 475015, 475089

* Decorated cars have six individual car numbers per paint scheme. These will be available as a six pack (six individual cars shrink wrapped together and are **easily broken up for individual sale**).



Penn Central

Item	Description
<input type="checkbox"/> I38014	6-Pack
<input type="checkbox"/> I38014A	Single Car

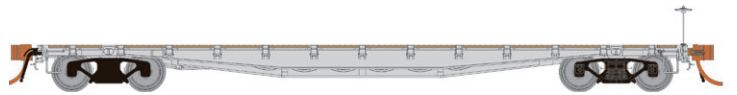
Cars: #701092, 701488, 701545, 701827, 701968, 702052



Lehigh Valley

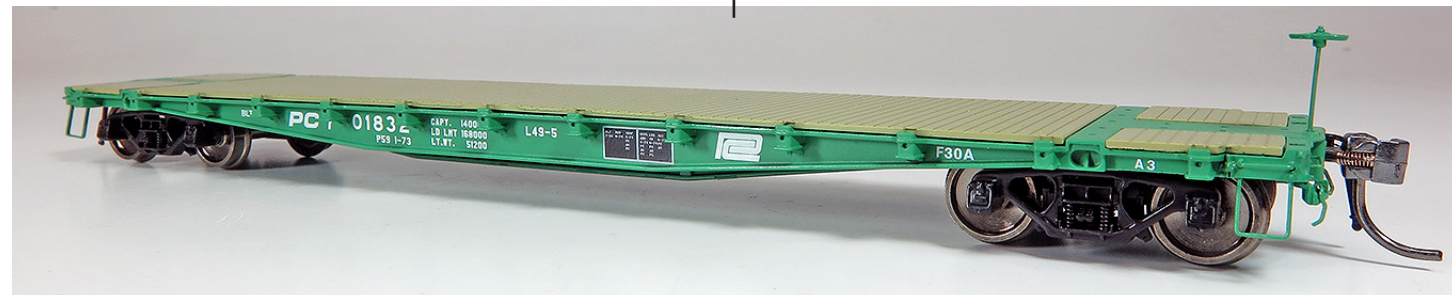
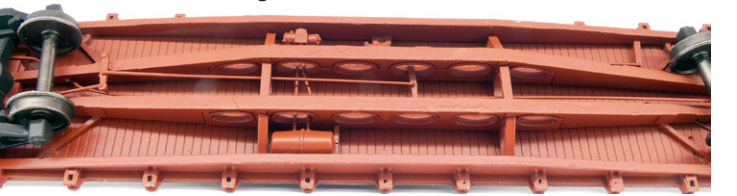
Item	Description
<input type="checkbox"/> I38015	6-Pack
<input type="checkbox"/> I38015A	Single Car

Cars: #10001, 10010, 10022, 10027, 10032, 10041



Undecorated

Item	Description
<input type="checkbox"/> I38097	Single Car



\$54.95 (SINGLE)
\$329.70 (6-PACK)
US MSRP

\$64.95 (SINGLE)
\$389.70 (6-PACK)
CANADIAN MSRP



CANADA: UNIT 21 • 500 ALDEN ROAD • MARKHAM • ONTARIO • L3R 5H5
USA: PO BOX 796 • HIGGANUM • CONNECTICUT • 06441
Tel. 1-855-LRC-6917 Fax. 1-905-474-3325 Website www.rapidotrains.com

Store Name _____
Phone Number _____

RAPIDO

F30 50' FLAT CARS

NEW RUN!

**HO
SCALE**



Rapido Trains Inc. is excited to announce a new run of our popular HO scale F30 flat cars, now with new variations!

The Pennsylvania Railroad's class F30A flat cars were one of the most numerous classes of flat cars on that railroad with 1500 being built between 1933 and 1934. The cars were so successful that the PRR built another 250 nearly identical copies in 1951, classified as F30D.

Starting in 1954, the Pennsy converted many F30D flat cars into early piggyback service cars. These cars received perforated side rub rails, end loading ramps, and four side posts.

Eighty-six cars were transferred to the new Trailer Train Company (TTX) between 1957 and 1958. These received additional upgrades in the form of ACF trailer hitches, revised side rails, and upgraded end ramps. The TTX cars also received roller bearing conversions on their trucks. These cars were used by TTX into the 1980s, many being upgraded with full roller bearing trucks and some even painted in TTX's yellow scheme.

The PRR utilized a massive one-piece steel casting for these F30 flat cars, and that sturdy construction meant that many have lasted an incredibly long time. In fact, several ex-TTX cars were purchased by BN and converted to crosstie-cars, with most still in service with BNSF today!

In this release we offer the F30 in several flavors: general service flat cars, piggyback flats with appropriate trailers, BNSF crosstie cars, and Conrail camp train work flats, complete with camp trailers!

All of Rapido's F30 Flat Cars Feature:

- Die-cast chassis and deck for optimum weight
- Correct trucks (PRR 2E-F10, roller bearing converted or full roller bearing trucks)
- Turned metal wheels
- Rapido's semi-scale couplers
- Full brake rigging
- Separate grab irons

Rapido's F30D Flat Cars Feature

- Correct piggy-back details (Class F30D, F30G)
- Trailer load with random, decorated trailers
- Six car numbers per scheme

Rapido's F30 Camp Cars Feature

- All-new camp trailer loads in four styles
- End railings and platforms
- Photetched details
- Multiple car numbers per scheme

Rapido's F3D Tie Cars Feature

- New deck
- All-new tie rack
- Concrete tie load
- Six car numbers per scheme



CANADA: UNIT 21 • 500 ALDEN ROAD • MARKHAM • ONTARIO • L3R 5H5
USA: PO BOX 796 • HIGGANUM • CONNECTICUT • 06441
Tel. 1-855-LRC-6917 Fax. 1-905-474-3325 Website www.rapido trains.com

Store Name _____
Phone Number _____

RAPIDO

F30A 50' MOW FLAT AND CAMP CARS

Conrail (and other railroads) mounted pre-fabricated "vans" on flat cars to house tack workers. Several common styles of van were built to serve the various needs of the work crews. Sleeping quarters were most common, but office and dining configurations were common sights in most work trains. These "Camp Trains" were common sights on Conrail and still on Norfolk Southern.

Rapido's camp cars are available in four different body styles: sleeper, diner, kitchen and office. In addition to vans mounted on F30A flat cars we offer each style van separately. They are perfect offices for yards, engine terminals, construction sites, in fact all sorts of applications! Separate vans are painted in appropriate colors but are unlettered.



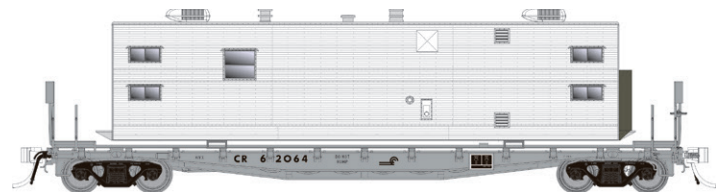
HO Conrail 50' Flat Car w/Camp Vans 3-Pack

Item	Description
<input type="checkbox"/> 138101	3-Pack Includes Office, Diner and Kitchen Vans Cars: #62204, 62893, 62954

CAMP CARS

\$69.95 (SINGLE)
\$199.95 (3-PACK) \$399.95 (6-PACK)
 US MSRP

\$84.95 (SINGLE)
\$249.95 (3-PACK) \$499.95 (6-PACK)
 CANADIAN MSRP



HO Conrail 50' Flat Car w/Sleeper Van

Item	Description
<input type="checkbox"/> 138102	6-Pack
<input type="checkbox"/> 138102A	Single Car Cars: #62064, 62089, 62089, 62109, 62124, 62751 Sleeper



HO NS 50' Flat Car w/Camp Van 3-Pack

Item	Description
<input type="checkbox"/> 138104	3-Pack Includes Office, Diner and Kitchen Vans Cars: #62879, 62893, 62904



HO Conrail F30A MOW with Deck Rails

Includes new etched metal deck with rails for speeders, ditchers, spike pullers, Hi-Rails etc.

Item	Description
<input type="checkbox"/> 138103	6-Pack
<input type="checkbox"/> 138103A	Single Car Cars: #58704, 58512, 58709, 58717, 58721, 58723,

\$54.95 (SINGLE) \$329.70 (6-PACK)
 US MSRP

\$64.95 (SINGLE) \$389.70 (6-PACK)
 CANADIAN MSRP



HO NS 50' Flat Car w/Sleeper Van

Item	Description
<input type="checkbox"/> 138105	6-Pack
<input type="checkbox"/> 138105A	Single Car Cars: #62153, 62304, 62126, 62647, 62756, 62956

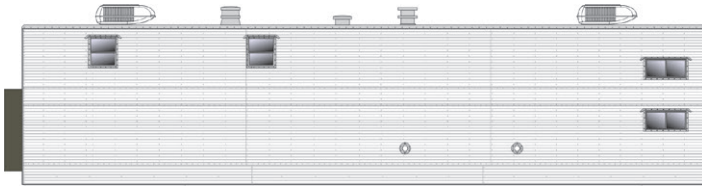


CANADA: UNIT 21 • 500 ALDEN ROAD • MARKHAM • ONTARIO • L3R 5H5
 USA: PO BOX 796 • HIGGANUM • CONNECTICUT • 06441
 Tel. 1-855-LRC-6917 Fax. 1-905-474-3325 Website www.rapidotrains.com

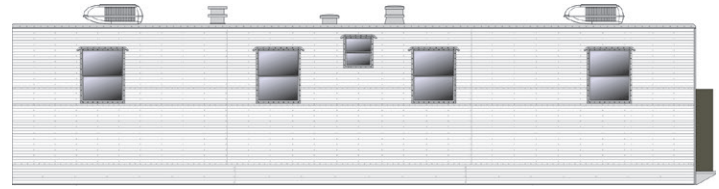
Store Name _____
 Phone Number _____

RAPIDO

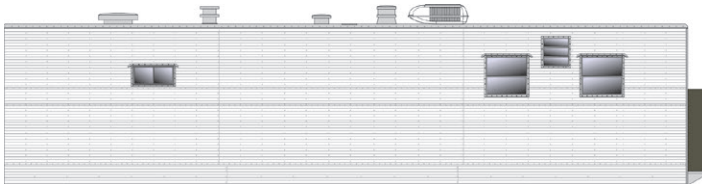
MOW CAMP TRAILERS



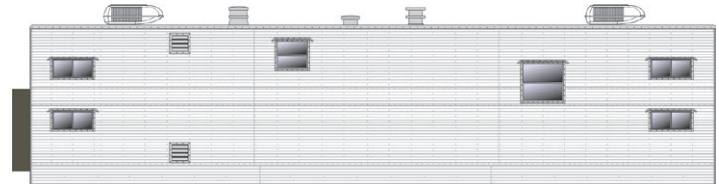
Item Description
 138201 Office Trailer



Item Description
 138203 Dining Trailer



Item Description
 138202 Kitchen Trailer



Item Description
 138204 Sleeper Trailer

\$24.95 US MSRP

\$29.95 CANADIAN MSRP

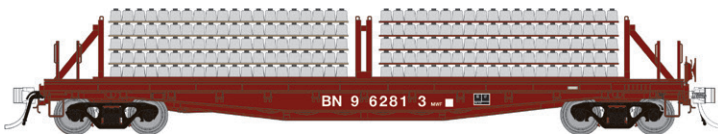
F30D 50' TIE SERVICE FLAT CARS W/LOADS

The massive one-piece steel casting used in their construction has meant that many have lasted an incredibly long time. Several ex-TTX cars were purchased by BN and converted to crosstie-cars, with most still in service with BNSF today!

Our tie car model is based on these BN/BNSF conversions and features a new deck, tie rack and decorated concrete crosstie load.



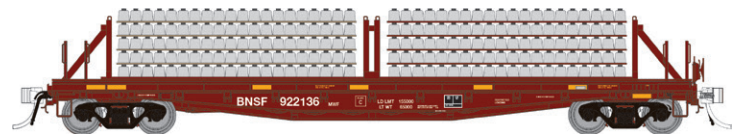
Matt Gentry Photo



BN - F30D Tie Car

Item Description
 138301 6-Pack
 138301A Single Car
 Cars: #962813, 962835, 962837, 962847, 962863, 962870

\$64.95 (SINGLE)
\$389.70 (6-PACK)
 US MSRP



BNSF - F30D Tie Car

Item Description
 138302 6-Pack
 138302A Single Car
 Cars: #922136, 922136, 922206, 922151, 922183, 922191

\$79.95 (SINGLE)
\$479.70 (6-PACK)
 CANADIAN MSRP



CANADA: UNIT 21 • 500 ALDEN ROAD • MARKHAM • ONTARIO • L3R 5H5
 USA: PO BOX 796 • HIGGANUM • CONNECTICUT • 06441
 Tel. 1-855-LRC-6917 Fax. 1-905-474-3325 Website www.rapidotrains.com

Store Name _____
 Phone Number _____

RAPIDO

F30 50' FLAT CARS PIGGYBACK SERVICE



Pennsylvania Delivery - F30D

Item	Description
<input type="checkbox"/> I38016	6-Pack
<input type="checkbox"/> I38016A	Single Car

Cars: #475303, 475308, 475318, 475331, 475343, 475349



TTX Late Red - F30D

Item	Description
<input type="checkbox"/> I38018	6-Pack
<input type="checkbox"/> I38018A	Single Car

Cars: #475058, 475080, 475082, 475116, 475202, 475204



TTX Early Red - F30D

Item	Description
<input type="checkbox"/> I38017	6-Pack
<input type="checkbox"/> I38017A	Single Car

Cars #475008, 475032, 475048, 475062, 475071, 475083



TTX Yellow - F30D

Item	Description
<input type="checkbox"/> I38019	6-Pack
<input type="checkbox"/> I38019A	Single Car

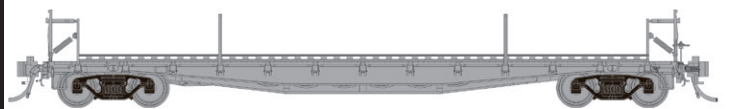
Cars #475027, 475152, 475264, 475230, 475262, 475264

** Trailers will be chosen at random from appropriate schemes.

* Decorated cars have six individual car numbers per paint scheme. These will be available as a six pack (six individual cars shrink wrapped together) and are **easily broken up for individual sale**.

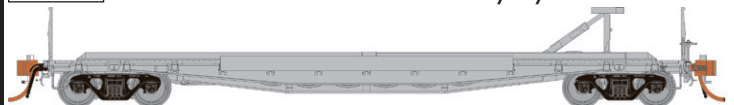
\$79.95 (SINGLE)
\$479.70 (6-PACK)
US MSRP

\$99.95 (SINGLE)
\$599.70 (6-PACK)
CANADIAN MSRP



Undecorated w/o Trailer

Item	Description
<input type="checkbox"/> I38098	F30D TOFC Flat Car early style



Item	Description
<input type="checkbox"/> I38099	F30D TOFC Flat Car late style

\$54.95 US MSRP - \$64.95 CANADIAN MSRP



CANADA: UNIT 21 • 500 ALDEN ROAD • MARKHAM • ONTARIO • L3R 5H5
USA: PO BOX 796 • HIGGANUM • CONNECTICUT • 06441
Tel. 1-855-LRC-6917 Fax. 1-905-474-3325 Website www.rapidotrains.com

Store Name _____
Phone Number _____

RAPIDO

F30 50' FLAT CARS GENERAL SERVICE



Pennsylvania Delivery

Item	Description
<input type="checkbox"/> 138011	6-Pack
<input type="checkbox"/> 138011A	Single Car

Cars: #474261, 474275, 474322, 474805, 475001, 475036



Pennsylvania 1950s

Item	Description
<input type="checkbox"/> 138012	6-Pack
<input type="checkbox"/> 138012A	Single Car

Cars: #474270, 474262, 474302, 474904, 475015, 475203

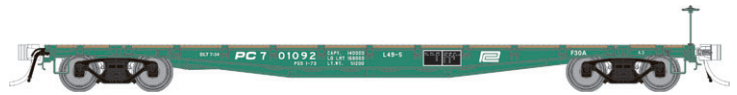


Pennsylvania 1960s

Item	Description
<input type="checkbox"/> 138013	6-Pack
<input type="checkbox"/> 138013A	Single Car

Cars: #474271, 474278, 474319, 474563, 475015, 475089

* Decorated cars have six individual car numbers per paint scheme. These will be available as a six pack (six individual cars shrink wrapped together and are **easily broken up for individual sale**).



Penn Central

Item	Description
<input type="checkbox"/> 138014	6-Pack
<input type="checkbox"/> 138014A	Single Car

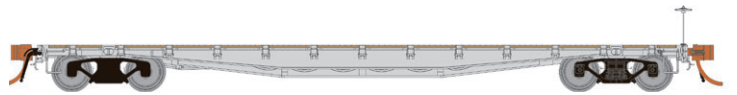
Cars: #701092, 701488, 701545, 701827, 701968, 702052



Lehigh Valley

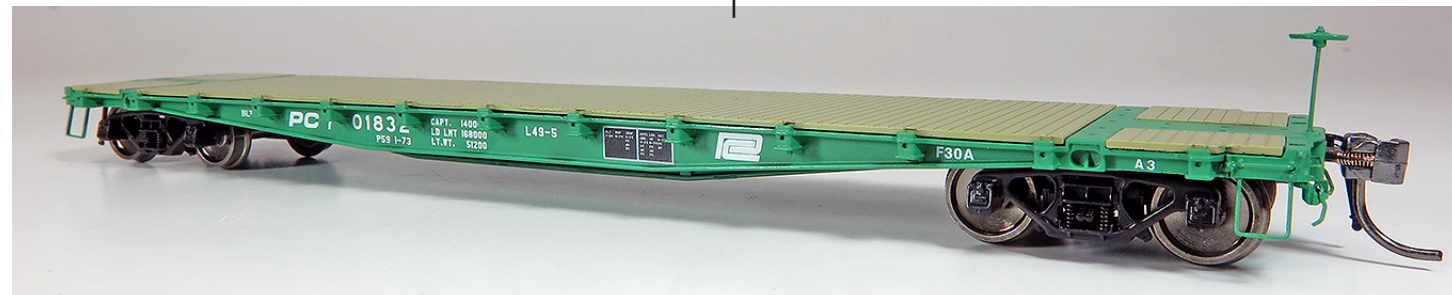
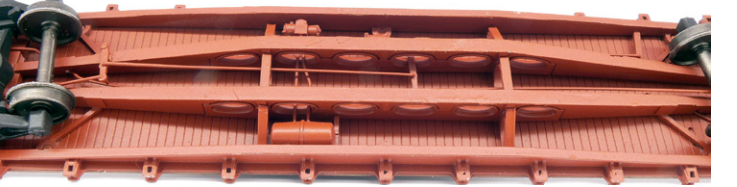
Item	Description
<input type="checkbox"/> 138015	6-Pack
<input type="checkbox"/> 138015A	Single Car

Cars: #10001, 10010, 10022, 10027, 10032, 10041



Undecorated

Item	Description
<input type="checkbox"/> 138097	Single Car



\$54.95 (SINGLE)
\$329.70 (6-PACK)
US MSRP

\$64.95 (SINGLE)
\$389.70 (6-PACK)
CANADIAN MSRP



CANADA: UNIT 21 • 500 ALDEN ROAD • MARKHAM • ONTARIO • L3R 5H5
USA: PO BOX 796 • HIGGANUM • CONNECTICUT • 06441
Tel. 1-855-LRC-6917 Fax. 1-905-474-3325 Website www.rapidotrains.com

Store Name _____
Phone Number _____

RAPIDO

Southern Pacific C-40-3 Steel Cupola Caboose



**HO
SCALE**



CAD render shown. Details are subject to revisions.

The HO Scale SP C-40-3 caboose features:

- Multiple window styles based on era
- Multiple roofwalk configurations based on era
- Working roof marker lights where appropriate
- Full, painted interior
- Operating interior lights
- Multiple optional parts based on era
- Full underframe details
- Factory-installed semi-scale couplers

Rapido is excited to offer SP's iconic C-40-3 caboose, including several of the unique paint schemes and car variations that occurred over its long 40+ year service life. Starting in 1940, Southern Pacific's Los Angeles General Shops constructed 185 C-40-3 cabooses, numbered SP 1050-1234. Additionally, subsidiary Texas & New Orleans received 30 C-40-3's, numbered 400-429.

Beginning in the mid-50s, C-40-3's went through an initial modernization - train radios were added, marker lamps were replaced with "frogeye" electric marker lights on the roof, the roofwalk on the cupola was removed, wind-wings were added to the cupola's side windows, and a tool box was replaced with a battery box.

By the 1960s, C-40-3's began to appear more in local service, and gradually most cars had some windows blanked out and/or window screens added. In the mid-70s, the green and red "frog light" markers were replaced with a single red light, due to an FRA safety mandate. Certain cars had roofwalks removed and end ladders cut down, while others kept roofwalks until retirement.

Order Deadline: TBA

MSRP **\$119.95** US
\$139.95 CAN



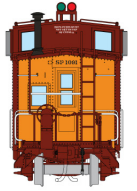
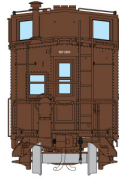
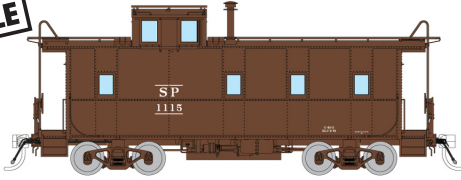
CANADA: 500 ALDEN ROAD • UNIT 21 • MARKHAM • ONTARIO • L3R 5H5
USA: PO BOX 796 • HIGGANUM • CONNECTICUT • 06441
Tel. 905.474.3314. Fax. 905.474.3325. Visit. www.rapidotrains.com

RAPIDO

Southern Pacific C-40-3 Steel Cupola Caboose

DEALER NAME:

**HO
SCALE**

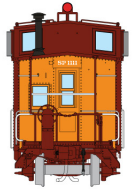
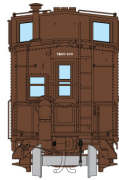


SP - Delivery Initials (1940+)

Item #	Road Number
162001	<input type="text"/> 1115
162002	<input type="text"/> 1160
162003	<input type="text"/> 1210

SP- Gothic Large – Modernized (1955+)

Item #	Road Number
162013	<input type="text"/> 1091
162014	<input type="text"/> 1112
162015	<input type="text"/> 1233

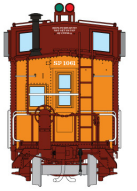
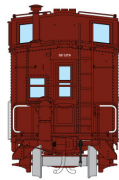


T&NO - Delivery Initials (1940+)

Item #	Road Number
162004	<input type="text"/> 400
162005	<input type="text"/> 409
162006	<input type="text"/> 416

SP - Gothic Large – Without Roofwalk (1970s+)

Item #	Road Number
162016	<input type="text"/> 1111
162017	<input type="text"/> 1136
162018	<input type="text"/> 1208

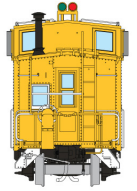


SP - Serif with Underline (1946+)

Item #	Road Number
162007	<input type="text"/> 1179
162008	<input type="text"/> 1183
162009	<input type="text"/> 1205

SP - Gothic Small – With Roofwalk (Mid-1960s+)

Item #	Road Number
162019	<input type="text"/> 1062
162020	<input type="text"/> 1216
162021	<input type="text"/> 1221



SP - Serif No Underline (1953+)

Item #	Road Number
162010	<input type="text"/> 1078
162011	<input type="text"/> 1101
162012	<input type="text"/> 1232

Sierra Railroad (1970+)

Item #	Road Number
162022	<input type="text"/> 8

MSRP **\$119.95** US **\$139.95** CAN

Order Deadline: TBA



CANADA: 500 ALDEN ROAD • UNIT 21 • MARKHAM • ONTARIO • L3R 5H5
 USA: PO BOX 796 • HIGGANUM • CONNECTICUT • 06441
 Tel. 905.474.3314. Fax. 905.474.3325. Visit. www.rapidotrains.com

RAPIDO



FA-1

HO SCALE



PRE-ORDER DEADLINE: SEPTEMBER 15th, 2023

3D CAD Renders shown, subject to revision.

Rapido is happy to announce the next in our series of classic Alco locomotives, the Alco FA-1 and FB-1

Between January 1946 and October 1950 a total of 440 FA-1s and 240 FB-1s were built by Alco and their Canadian subsidiary, Montreal Locomotive Works (MLW). They were originally sold to twenty-five railroads in the US, Canada and Mexico. The FA-1 (and booster FB-1) were rated at 1500 horsepower and was designed primarily as a freight hauler.

In a market that was becoming dominated by EMD products, the FA-1 came in a distant second due in part to reliability issues with its 244 prime mover. Still, they were popular with several roads and could be found at the head of freights int the late 1960s.

Following on to our FPA-4, FA-2 and PA loco models, the new FA-1/FB-1 models continues the Rapido tradition for accurate Alco cab units with unsurpassed detail.

A-Units

\$229.95 DC/DCC-ready **\$339.95** DC/DCC/Sound - US
(\$259.95 DC/DCC-ready \$369.95 DC/DCC/Sound - Canadian)

A-B Sets

\$429.95 DC/DCC-ready **\$649.95** DC/DCC/Sound - US
(\$489.95 DC/DCC-ready \$699.95 DC/DCC/Sound - Canadian)

Rapido's new HO scale FA-1/FB-1 features:

- Correct nose and windshield contours
- Flat or angled number boards as appropriate
- Dynamic and non-dynamic brake versions
- Etched side and fan screens
- Heavy, die-cast chassis
- 5-pole motor with dual flywheels
- Operating headlights, class lights and back-up lights
- Full underbody piping and conduit
- Separate grab irons and handrails



CANADA: UNIT 21 • 500 ALDEN ROAD • MARKHAM • ONTARIO • L3R 5H5
USA: PO BOX 796 • HIGGANUM • CONNECTICUT • 06441
Tel. 1-855-LRC-6917 Fax. 1-905-474-3325 Website www.rapidotrains.com

Customer Name _____

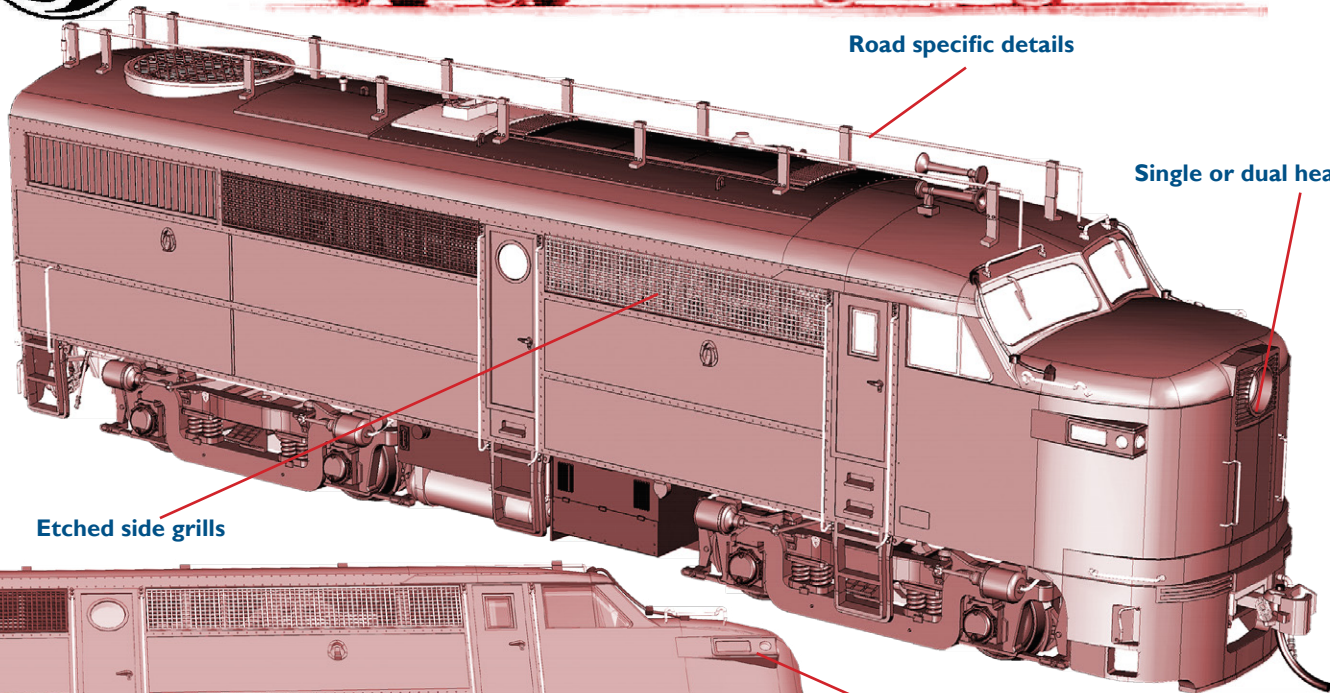
Phone Number _____

RAPIDO

Alco

FA-1

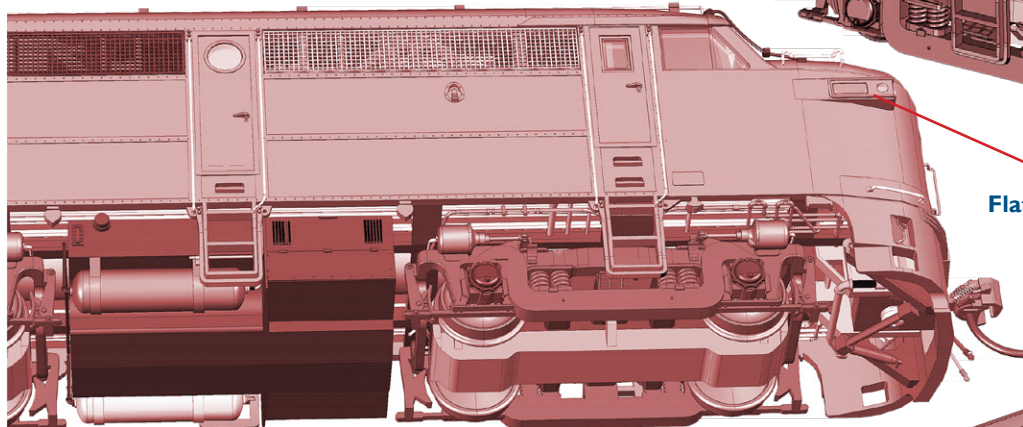
HO
SCALE



Road specific details

Single or dual headlights

Etched side grills

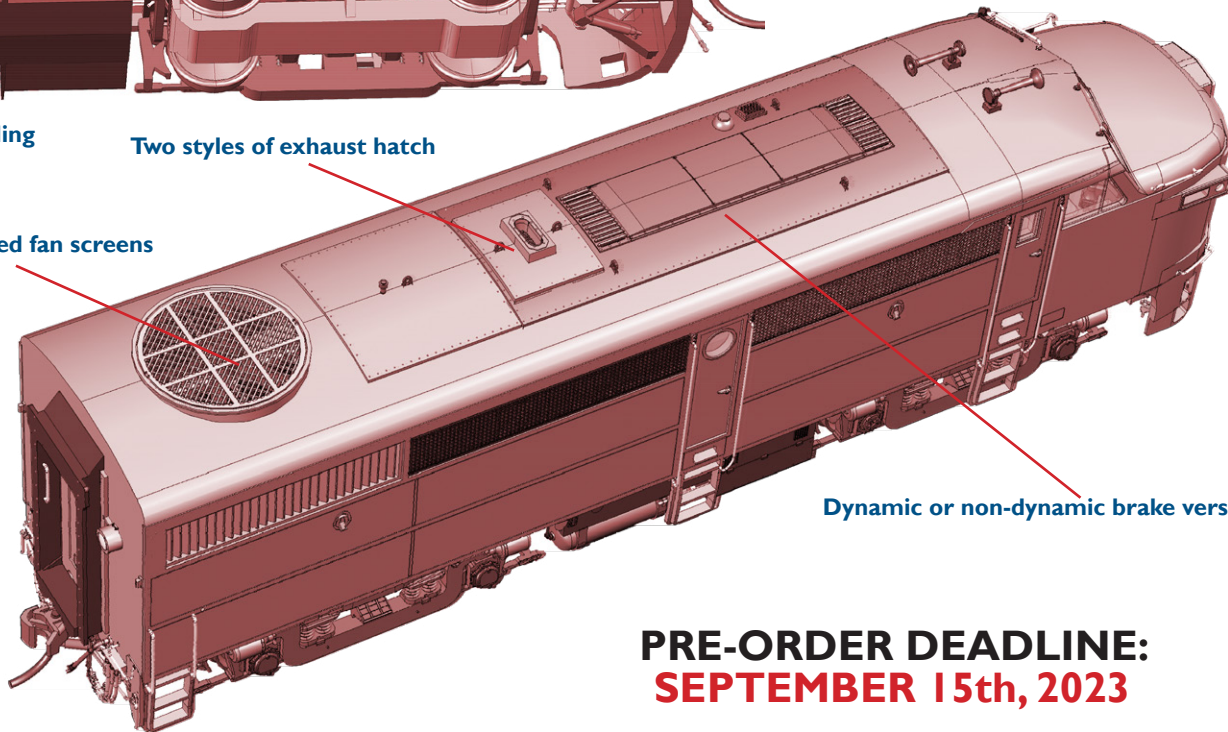


Flat or angled number boards

Full underbody detailing

Two styles of exhaust hatch

Two styles of etched fan screens



Dynamic or non-dynamic brake versions

PRE-ORDER DEADLINE:
SEPTEMBER 15th, 2023



CANADA: UNIT 21 • 500 ALDEN ROAD • MARKHAM • ONTARIO • L3R 5H5
USA: PO BOX 796 • HIGGANUM • CONNECTICUT • 06441
Tel. 1-855-LRC-6917 Fax. 1-905-474-3325 Website www.rapidotrains.com

RAPIDO
Customer Name _____
Phone Number _____



FA-1



HO SCALE



Canadian National

DC	DC/DCC/Sound	Description
<input type="checkbox"/> 37001	<input type="checkbox"/> 37501	FA-1 #9400
<input type="checkbox"/> 37002	<input type="checkbox"/> 37502	FA-1 #9402
<input type="checkbox"/> 37003	<input type="checkbox"/> 37503	FA-1 #9403
<input type="checkbox"/> 37004	<input type="checkbox"/> 37504	FA-1 #9406



Erie

DC	DC/DCC/Sound	Description
<input type="checkbox"/> 37013	<input type="checkbox"/> 37513	FA-1 #726
<input type="checkbox"/> 37014	<input type="checkbox"/> 37514	FA-1 #728
<input type="checkbox"/> 37015	<input type="checkbox"/> 37515	FA-1 + FB-1 #725A + 725B
<input type="checkbox"/> 37016	<input type="checkbox"/> 37516	FA-1 + FB-1 #725C + 725D



Canadian Pacific (block)

DC	DC/DCC/Sound	Description
<input type="checkbox"/> 37005	<input type="checkbox"/> 37505	FA-1 #4008
<input type="checkbox"/> 37006	<input type="checkbox"/> 37506	FA-1 #4010
<input type="checkbox"/> 37007	<input type="checkbox"/> 37507	FA-1 + FB-1 #4012 + 4410
<input type="checkbox"/> 37008	<input type="checkbox"/> 37508	FA-1 + FB-1 #4026 + 4415



Great Northern

DC	DC/DCC/Sound	Description
<input type="checkbox"/> 37017	<input type="checkbox"/> 37517	FA-1 #276A
<input type="checkbox"/> 37018	<input type="checkbox"/> 37518	FA-1 #440D
<input type="checkbox"/> 37019	<input type="checkbox"/> 37519	FA-1 + FB-1 #310A + 310B
<input type="checkbox"/> 37020	<input type="checkbox"/> 37520	FA-1 + FB-1 #442A + 442B



Canadian Pacific (script)

DC	DC/DCC/Sound	Description
<input type="checkbox"/> 37009	<input type="checkbox"/> 37509	FA-1 #4016
<input type="checkbox"/> 37010	<input type="checkbox"/> 37510	FA-1 #4025
<input type="checkbox"/> 37011	<input type="checkbox"/> 37511	FA-1 + FB-1 #4015 + 4406
<input type="checkbox"/> 37012	<input type="checkbox"/> 37512	FA-1 + FB-1 #4019 + 4416



Lehigh & New England

DC	DC/DCC/Sound	Description
<input type="checkbox"/> 37021	<input type="checkbox"/> 37521	FA-1 #701
<input type="checkbox"/> 37022	<input type="checkbox"/> 37522	FA-1 #710
<input type="checkbox"/> 37023	<input type="checkbox"/> 37523	FA-1 + FB-1 #702 + 753
<input type="checkbox"/> 37024	<input type="checkbox"/> 37524	FA-1 + FB-1 #707 + 751

PRE-ORDER DEADLINE: SEPTEMBER 15th, 2023



A-Units

\$229.95 DC/DCC-ready

\$339.95 DC/DCC/Sound - US

(\$259.95 DC/DCC-ready \$369.95 DC/DCC/Sound - Canadian)

A-B Sets

\$429.95 DC/DCC-ready

\$649.95 DC/DCC/Sound - US

(\$489.95 DC/DCC-ready \$699.95 DC/DCC/Sound - Canadian)

3D CAD Render shown, subject to revision.



CANADA: UNIT 21 • 500 ALDEN ROAD • MARKHAM • ONTARIO • L3R 5H5
USA: PO BOX 796 • HIGGANUM • CONNECTICUT • 06441
Tel. 1-855-LRC-6917 Fax. 1-905-474-3325 Website www.rapidotrains.com

Customer Name _____

Phone Number _____

RAPIDO



FA-1



HO SCALE



New Haven (Orange Delivery)

DC	DC/DCC/Sound	Description
<input type="checkbox"/> 37025	<input type="checkbox"/> 37525	FA-1 #0405
<input type="checkbox"/> 37026	<input type="checkbox"/> 37526	FA-1 #0429
<input type="checkbox"/> 37027	<input type="checkbox"/> 37527	FA-1 + FB-1 #0402+0450
<input type="checkbox"/> 37028	<input type="checkbox"/> 37528	FA-1 + FB-1 #0416+0457



Reading

DC	DC/DCC/Sound	Description
<input type="checkbox"/> 37037	<input type="checkbox"/> 37537	FA-1 #301
<input type="checkbox"/> 37038	<input type="checkbox"/> 37538	FA-1 #304
<input type="checkbox"/> 37039	<input type="checkbox"/> 37539	FA-1 + FB-1 #302 + 302B
<input type="checkbox"/> 37040	<input type="checkbox"/> 37540	FA-1 + FB-1 #305 + 304B



New Haven (McGinnis)

DC	DC/DCC/Sound	Description
<input type="checkbox"/> 37029	<input type="checkbox"/> 37529	FA-1 #0409
<input type="checkbox"/> 37030	<input type="checkbox"/> 37530	FA-1 #0412
<input type="checkbox"/> 37031	<input type="checkbox"/> 37531	FA-1 + FB-1 #0407+0452
<input type="checkbox"/> 37032	<input type="checkbox"/> 37532	FA-1 + FB-1 #0421+0454



Union Pacific

DC	DC/DCC/Sound	Description
<input type="checkbox"/> 37041	<input type="checkbox"/> 37541	FA-1 #1609
<input type="checkbox"/> 37042	<input type="checkbox"/> 37542	FA-1 #1635
<input type="checkbox"/> 37043	<input type="checkbox"/> 37543	FA-1 + FB-1 #1603 + 1622B
<input type="checkbox"/> 37044	<input type="checkbox"/> 37544	FA-1 + FB-1 #1624A + 1636B



Pennsylvania

DC	DC/DCC/Sound	Description
<input type="checkbox"/> 37033	<input type="checkbox"/> 37533	FA-1 #9601
<input type="checkbox"/> 37034	<input type="checkbox"/> 37534	FA-1 #9605
<input type="checkbox"/> 37035	<input type="checkbox"/> 37535	FA-1 + FB-1 #9603A + 9603B
<input type="checkbox"/> 37036	<input type="checkbox"/> 37536	FA-1 + FB-1 #9607A + 9607B

A-Units

\$229.95 DC/DCC-ready **\$339.95** DC/DCC/Sound - US
 (\$259.95 DC/DCC-ready \$369.95 DC/DCC/Sound - Canadian)

A-B Sets

\$429.95 DC/DCC-ready **\$649.95** DC/DCC/Sound - US
 (\$489.95 DC/DCC-ready \$699.95 DC/DCC/Sound - Canadian)

PRE-ORDER DEADLINE: SEPTEMBER 15th, 2023



3D CAD Render shown, subject to revision.

Looking for Un-Numbered units?
 Rapido will produce special runs of un-numbered A or B units (no decals included) in groups of six or more. Get together with friends and place your special order directly with us! Contact us at the addresses below for more details.



CANADA: UNIT 21 • 500 ALDEN ROAD • MARKHAM • ONTARIO • L3R 5H5
 USA: PO BOX 796 • HIGGANUM • CONNECTICUT • 06441
 Tel. 1-855-LRC-6917 Fax. 1-905-474-3325 Website www.rapidotrains.com

Customer Name _____
 Phone Number _____

RAPIDO



THE RAPIDO GP40 LOCOMOTIVE

Rapido Trains

DATE 2023
MODEL GP40

CLASS 0-4-4-0
SERIAL 1ST RUN





*NOTE:
3D CAD render is subject to revisions before final production.

Rapido is proud to announce the EMD GP40 locomotive! The GP40 series were considered the gold standard of four-axle locomotives, with over 1,000 examples built for 30 different railroads in North America. EMD began production in late 1965 with an order for the New York Central. The final locomotive in the series would roll off the line in 1971 for the Chesapeake & Ohio, number 3794. In between that time period, the Penn Central would amass the largest fleet with the Baltimore & Ohio coming in at a close second. After 1971, production would continue on with the successor: the GP40-2.

Our first run will bring you many never-produced-in-plastic variations, such as: nose and Gyra/Mars lights, stepwell variations, Canadian versions and slugs. The Missouri-Kansas-Texas (MKT) Railroad converted a heavily-damaged GP40 into a unique one-of-a-kind road slug, number 501. We will be producing 501 in both MKT and Union Pacific - complete with working motor. Every DCC/Sound locomotive comes with the Mo-Power capacitor, which will end most interruptions to track power. A win for all!

The GP40 Locomotive features:

- Road-specific details for each model
- Slug is fully powered! Motor tucked into frame and body
- Rapido's innovative dead straight metal side handrails with plastic stanchions
- Appropriate cab or nose headlights
- Incredible underframe detail including traction motor cables, air filters and a silly number of separately-applied parts
- Multiple truck sideframes tooled
- Road-specific battery box doors
- Multiple dynamic-brake hatches
- Separate grab irons and handrails installed at the factory
- Mo-Power capacitor
- Operating headlights, rear lights, white class lights AND ditch lights and beacons (where appropriate)
- DC/Silent (21-pin DCC Ready) or DC/DCC/Sound - ESU LokSound V5 Decoder
- Highly detailed cab interior



ORDER DEADLINE:

TBD

MSRP

SINGLE LOCO	No Sound	\$239.95	USD
	w/Sound	\$349.95	USD
LOCO+ SLUG	No Sound	\$449.95	USD
	w/Sound	\$669.95	USD
SINGLE LOCO	No Sound	\$269.95	CAD
	w/Sound	\$379.95	CAD
LOCO+ SLUG	No Sound	\$489.95	CAD
	w/Sound	\$709.95	CAD



CANADA: 500 ALDEN ROAD • UNIT 21 • MARKHAM • ONTARIO • L3R 5H5
 USA: PO BOX 796 • HIGGANUM • CONNECTICUT • 06441
 Tel. 905.474.3314. Fax. 905.474.3325. Visit. www.rapidotrains.com

RAPIDO



THE RAPIDO GP40 LOCOMOTIVE

HO SCALE

DEALER NAME:

Modified Pyle-National bulb-reflector headlight

Dynamic or Non-dynamic and IC style access doors (Where appropriate)

Working class lights



Correct fuel tank per prototype

Multiple step variations

Mo+Power BY RAPIDO
UNINTERRUPTED LOCOMOTIVE POWER

Nose headlights per roadname



GMD GP40s!

CN 4016 and 4017 were geared for 89 MPH passenger service!

Pyle-National bulb-reflector headlight



Rapido's proven, silky-smooth drive system

Many rear details, such as: Number boards, blanked out class lights, blanked out boards and more!

*NOTE:
3D CAD renders are subject to revisions before final production.

MSRP	SINGLE LOCO	No Sound	\$239.95	USD
		w/Sound	\$349.95	USD
	LOCO+SLUG	No Sound	\$449.95	USD
		w/Sound	\$669.95	USD

	SINGLE LOCO	No Sound	\$269.95	CAD
		w/Sound	\$379.95	CAD
	LOCO+SLUG	No Sound	\$489.95	CAD
		w/Sound	\$709.95	CAD

ORDER DEADLINE:
TBD



CANADA: 500 ALDEN ROAD • UNIT 21 • MARKHAM • ONTARIO • L3R 5H5
USA: PO BOX 796 • HIGGANUM • CONNECTICUT • 06441
Tel. 905.474.3314. Fax. 905.474.3325. Visit. www.rapidotrains.com

RAPIDO



THE RAPIDO GP40 LOCOMOTIVE

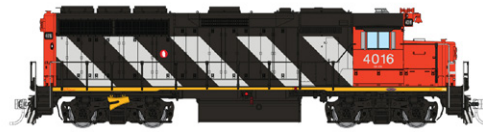
HO SCALE

DEALER NAME:



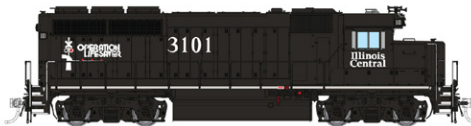
Canadian National (Large Noodle / GMD) 1967+

Road #	Item # (DC/Silent)	Item # (DC/DCC/Sound)
4014	40001 <input type="text"/>	40501 <input type="text"/>
4015	40002 <input type="text"/>	40502 <input type="text"/>
4017	40003 <input type="text"/>	40503 <input type="text"/>



Canadian National (Stripes / GMD) 1978+

Road #	Item # (DC/Silent)	Item # (DC/DCC/Sound)
4012	40004 <input type="text"/>	40504 <input type="text"/>
4013	40005 <input type="text"/>	40505 <input type="text"/>
4016	40006 <input type="text"/>	40506 <input type="text"/>



Illinois Central (GP40R) Mid 90s

Road #	Item # (DC/Silent)	Item # (DC/DCC/Sound)
3101	40007 <input type="text"/>	40507 <input type="text"/>
3114	40008 <input type="text"/>	40508 <input type="text"/>
3121	40009 <input type="text"/>	40509 <input type="text"/>
3137	40010 <input type="text"/>	40510 <input type="text"/>



Canadian National / IC (GP40R) 2012+

Road #	Item # (DC/Silent)	Item # (DC/DCC/Sound)
3103	40011 <input type="text"/>	40511 <input type="text"/>
3106	40012 <input type="text"/>	40512 <input type="text"/>
3117	40013 <input type="text"/>	40513 <input type="text"/>
3123	40014 <input type="text"/>	40514 <input type="text"/>



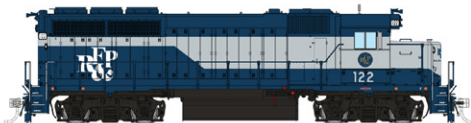
MKT - Single Loco (Green / Yellow) 1982+

Road #	Item # (DC/Silent)	Item # (DC/DCC/Sound)
194	40015 <input type="text"/>	40515 <input type="text"/>
216	40016 <input type="text"/>	40516 <input type="text"/>
227	40018 <input type="text"/>	40518 <input type="text"/>



MKT - GP40 and Slug (Green / Yellow) 1982+

Road #	Item # (DC/Silent)	Item # (DC/DCC/Sound)
226 + 501	40017 <input type="text"/>	40517 <input type="text"/>



RF&P (Block Scheme) 1989+

Road #	Item # (DC/Silent)	Item # (DC/DCC/Sound)
122	40019 <input type="text"/>	40519 <input type="text"/>
124	40020 <input type="text"/>	40520 <input type="text"/>
125	40021 <input type="text"/>	40521 <input type="text"/>
127	40022 <input type="text"/>	40522 <input type="text"/>



MSRP

SINGLE LOCO	No Sound	\$239.95 USD
	w/Sound	\$349.95 USD
LOCO+SLUG	No Sound	\$449.95 USD
	w/Sound	\$669.95 USD

SINGLE LOCO	No Sound	\$269.95 CAD
	w/Sound	\$379.95 CAD
LOCO+SLUG	No Sound	\$489.95 CAD
	w/Sound	\$709.95 CAD

***NOTE:**
All artwork is subject to revisions before final production.

ORDER DEADLINE:
TBD



CANADA: 500 ALDEN ROAD • UNIT 21 • MARKHAM • ONTARIO • L3R 5H5
USA: PO BOX 796 • HIGGANUM • CONNECTICUT • 06441
Tel. 905.474.3314. Fax. 905.474.3325. Visit. www.rapidotrains.com

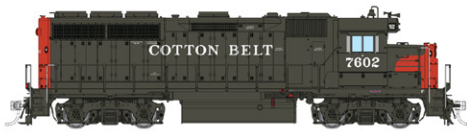
RAPIDO



THE RAPIDO GP40 LOCOMOTIVE

HO SCALE

DEALER NAME:



SSW/Cotton Belt - 1966+

Road #	Item # (DC/Silent)	Item # (DC/DCC/Sound)
7600	40023 <input type="text"/>	40523 <input type="text"/>
7602	40024 <input type="text"/>	40524 <input type="text"/>
7604	40025 <input type="text"/>	40525 <input type="text"/>
7607	40026 <input type="text"/>	40526 <input type="text"/>



Wisconsin Central - 1994+

Road #	Item # (DC/Silent)	Item # (DC/DCC/Sound)
3011	40031 <input type="text"/>	40531 <input type="text"/>
3012	40032 <input type="text"/>	40532 <input type="text"/>
3014	40033 <input type="text"/>	40533 <input type="text"/>
3023	40034 <input type="text"/>	40534 <input type="text"/>



Union Pacific - 1997+

Road #	Item # (DC/Silent)	Item # (DC/DCC/Sound)
589	40027 <input type="text"/>	40527 <input type="text"/>
594	40028 <input type="text"/>	40528 <input type="text"/>



Western Pacific (Silver / Orange) 1970+

Road #	Item # (DC/Silent)	Item # (DC/DCC/Sound)
3502	40035 <input type="text"/>	40535 <input type="text"/>
3507	40036 <input type="text"/>	40536 <input type="text"/>
3511	40037 <input type="text"/>	40537 <input type="text"/>
3514	40038 <input type="text"/>	40538 <input type="text"/>



Union Pacific - GP40 and Slug - 1997+

Road #	Item # (DC/Silent)	Item # (DC/DCC/Sound)
3000 + S-300	40029 <input type="text"/>	40529 <input type="text"/>



Union Pacific - 1997+

Road #	Item # (DC/Silent)	Item # (DC/DCC/Sound)
3001	40030 <input type="text"/>	40530 <input type="text"/>

MoPower BY RAPIDO
UNINTERRUPTED LOCOMOTIVE POWER



Photo by Alan Miller, collection of Kevin Eudaly.

*NOTE:

All artwork is subject to revisions before final production.

MSRP
SINGLE LOCO
LOCO+SLUG

No Sound **\$239.95** USD
w/Sound **\$349.95** USD
No Sound **\$449.95** USD
w/Sound **\$669.95** USD

No Sound **\$269.95** CAD
w/Sound **\$379.95** CAD
No Sound **\$489.95** CAD
w/Sound **\$709.95** CAD

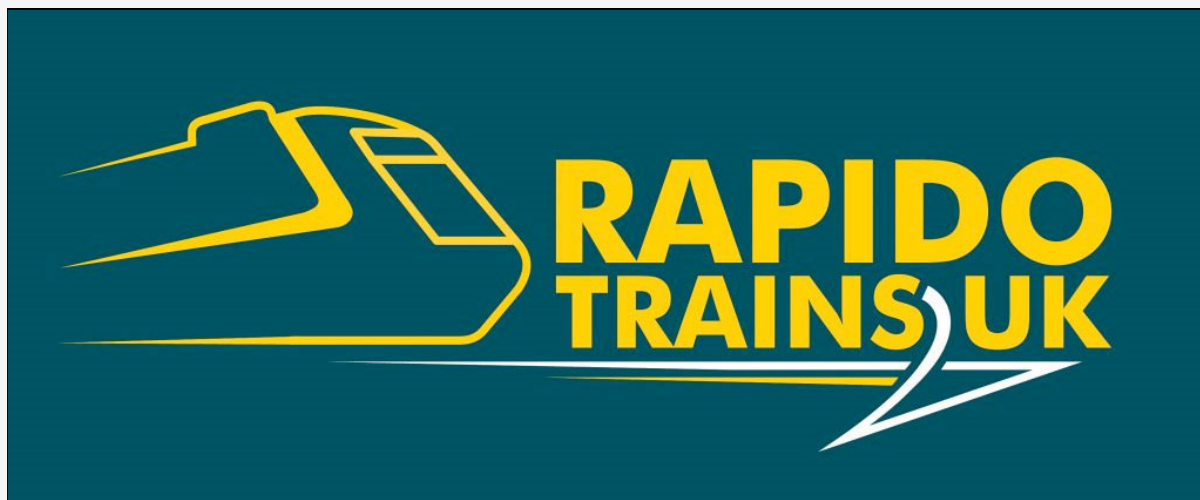
ORDER DEADLINE:
TBD



CANADA: 500 ALDEN ROAD • UNIT 21 • MARKHAM • ONTARIO • L3R 5H5
USA: PO BOX 796 • HIGGANUM • CONNECTICUT • 06441
Tel. 905.474.3314. Fax. 905.474.3325. Visit. www.rapidotrains.com

RAPIDO

Da: Rapido Trains UK <customerservice@rapidotrains.co.uk>
Inviato: venerdì 25 agosto 2023 13:04
A: news_in@modellismoferroviario.it
Oggetto: Rapido UK News - No. 34



Rapido UK Newsletter No. 34
©2023 Rapido Trains Ltd

Dear Rapido Customer,

Following an inexplicably damp July, it was rather nice to enjoy a bit of sunshine here at Rapido Trains UK.

That ray of sunshine has also been extended to our upcoming products. We are really pleased to say that one of our locomotives has finally gone on sale.

We are of course talking about the [GWR 44XX 'Small Prairie'](#), which is available to pre-order now!

We have also made substantial progress on numerous other projects of all scales, but before we move on and provide more detail, we have something nice to address.

We would just like to thank everyone for their incredible response to Lion hitting the shelves last month. It's fair to say that for one reason or another, this project has had people singing its praises since the very beginning and that positivity has continued up to and beyond the launch. We have received some awesome pictures, videos and emails from across the model railway community. Thanks to you the beast has well and truly been released!

Right, let's take forty-four big steps forward.

What's New?

GWR 44XX is now on sale!



Small Prairies have always been popular with modellers - but our 44xx will be the first of the class available in ready-to-run.

There has been a lot of excitement and interest since we first announced this project, and we are sorry we have kept you waiting. Thankfully, your patience has been rewarded and we are pleased to say that the [44XX](#) has progressed enough that we are able to start taking pre-orders.

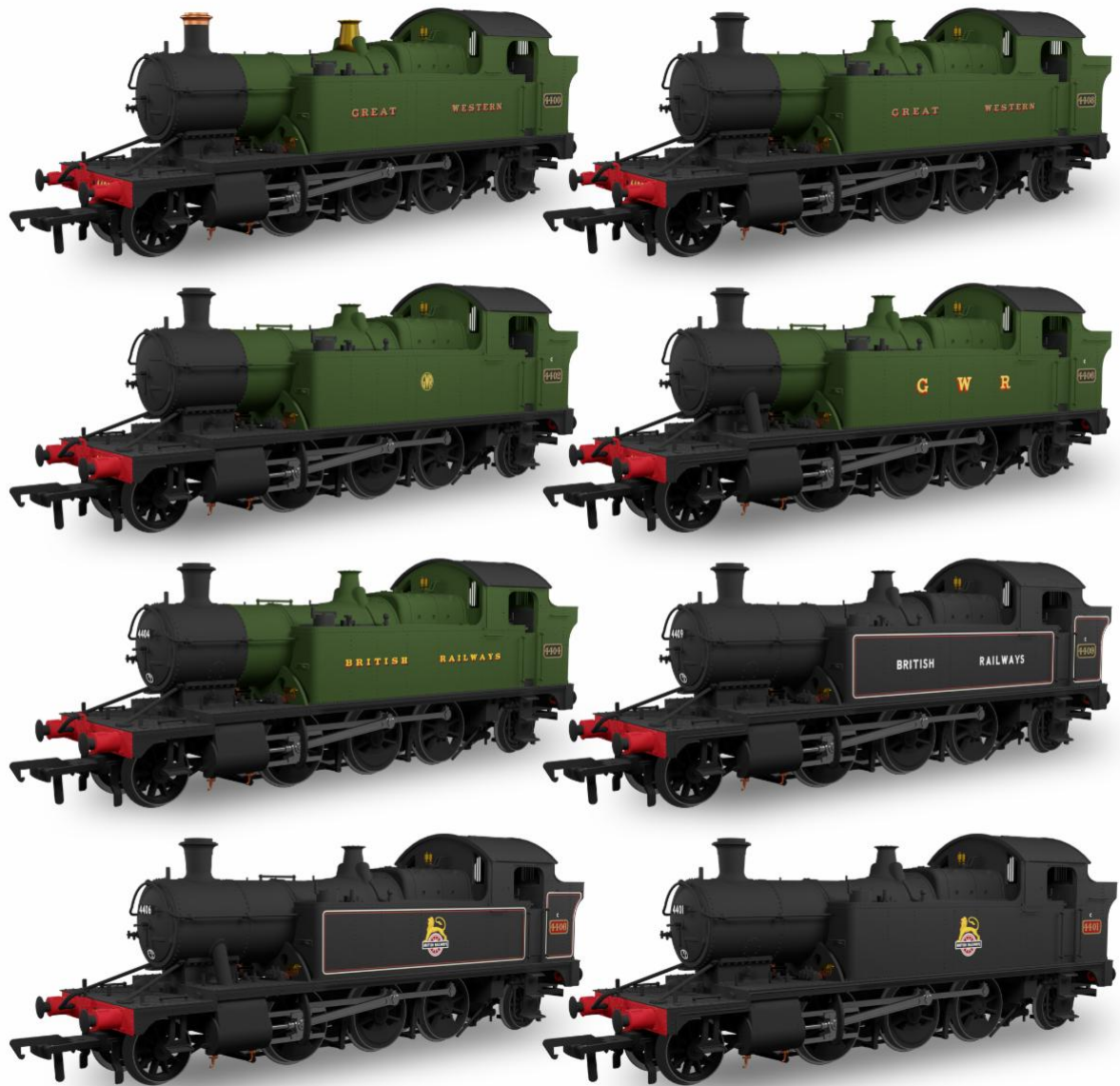
We have taken a little longer than planned to check over the designs and artwork, but we are confident that this diligent approach has given us the time we need to produce a gorgeous Great Western Railway classic.



Whilst the class survived into BR days, sadly none made it into preservation.

Better known to its fans as the Small Prairie, this delightful little 2-6-2T is the perfect locomotive for the ever-popular Great Western Railway branch line layout. Despite being a small class, the 44XXs found work in many different parts of the Great Western network, including around Birmingham and South Wales, but they are perhaps best known for their performances in Devon and Cornwall. Often seen alongside B-set coaches or a variety of light freight, this tank engine is the perfect addition to our gradually expanding range of Great Western Railway stock.

Rapido Trains UK will be releasing eight highly detailed variants, which cover everything from the clearly recognisable Great Western livery of the 1920s right up to its final British Railways guise before the last of the 44XX sadly got sent to the scrapyards. To represent the subtle changes that the class experienced throughout its lifetime, we have included some rather nice little features so they stand out from their counterparts. These include early and late-era buffers, inside and outside steam pipe versions, parallel and tapered chimneys, and probably the most riveting addition, two different patterns for the rivets on the side tanks.



Eight versions will be available featuring both different liveries and detail changes.

Crammed full of the usual Rapido Trains UK awesome locomotive features – such as a combination of die-cast metal and injection moulded plastic construction, firebox flicker, a Next18 decoder socket, NEM coupler pockets, sprung buffers, and a high-quality motor and mechanism – this little Prairie is lining itself up to be quite the big dog.



A perfect branch line train? Why not order a [B Set](#) to run behind your 44XX?

It will also be the first small prairie produced in ready-to-run to have a straight footplate and separately-fitted cab shutters.

You can pre-order your [GWR 44XX](#) now from our website or from one of our Official Retailers, and they are available in DCC Ready (£172.95 RRP) and DCC Sound Fitted (£284.95 RRP) versions.

PRE-ORDER YOUR 44XX NOW

A new Low for Rapido - LNER / LMS 25t Machine Wagons



Following the popularity of the Loriot Y GWR machine wagon we thought we should add something for LNER & LMS modellers.

This humble [LOWMAC](#) design dates back to the Great Central 'MAC N' 20t machine wagon. With a few revisions to the original concept, the LNER upgraded the design in 1938 into the diagram 143 'MAC NV' wagon, increasing the wagon's carry weight to 22 tons.

Pressures of the wartime era evidently called for an even greater load weight, so prior to production another batch of improvements were carried out. The design was refined by replacing the 12in by 6in main longitudinal sections with 14 in by 6in equivalents. This increased the load to 25t, thus creating the diagram 173 'MAC PV' we know today. Featuring 4 binding chains and 16 lashing rings, this all-purpose implement truck was fit for any load (well, any load up to 25 tons of course).

Shildon Wagon Works received its first order for diagram 173 'MAC PV' implement trucks in 1943, and by 1944 production was complete. The first batch of 60 wagons rolled out just in time to assist with the heavy freight traffic that was heading to the South Coast in preparation for the liberation of Europe. 30 wagons went to the LMS and the LNER retained 30 for themselves, however, in the last year of the war, and first year of peacetime, the LNER ordered a further two batches of 25, taking the Shildon built quota up to 110 vehicles.



The 173 'MAC PV' machine wagons were reclassified as LOWMAC EP. Having proven successful throughout its working life under the Big 4, British Railways decided to build even more of them – giving them the diagram 2/242 in their number system. Passing the contract to P & W Maclellan in 1950, a further 38 vehicles were produced. Incredibly, the LOWMAC continued serving Britain's railways as an engineering vehicle way into the '00s.

The Rapido Trains UK design of this long-serving wagon will be the most detailed version of the LOWMAC to date, featuring a combination of die-cast metal and injection moulded plastic construction, brass bearings, moulded lashing rings, and a rather nice optional load that represents a set of 4 replacement wheels and their carriers. These wheelsets will feature scale axles and are ideal for scenic use if not required as a load.



Available in eleven different versions there is something for anyone modelling the Eastern or Midland regions from the late '40s to early '00s.

We will be producing 11 SKUs that cover liveries from the original 1944 design to its most modern engineering guise, and everything in between.

The LNER/LMS 25t machine wagons are due Q2 next year. The model is currently in tooling and we hope to have samples shortly.

The order book is open, and you can order your LNER/LMS 25t machine wagon direct from us today or from any Official Retailer. The RRP is £39.95.



**Pre-Production Artwork
Subject to Change**

ORDER YOUR LOWMACS HERE

Orderbooks Closing

RED ALERT! – Metropolitan Railway E Class



The order books are closing on **September 11th** for our utterly gorgeous [Metropolitan E Class](#).

Better known as Met 1 in the enthusiast community this powerful pre-grouping 0-4-4 is beloved by many, and from these incredible decorated samples of our upcoming model, it's easy to see why.

Most preserved locomotives have snappy adjectives applied to them to build interest, and yet few have genuinely earned the titles of 'iconic' and 'historic' to the extent Met 1 has.

Emerging in a cloud of smoke and steam from the depths of London's very first subterranean railway, Met 1 and her classmates were a sight to behold. Unfortunately, there are few people alive who will remember such a sight in daily use. However, a much more common memory for enthusiasts is seeing this beautifully restored locomotive at the Buckinghamshire Railway Centre (where it is the society's flagship attraction), at various other heritage railways as a gala visitor, or back on its old stomping ground on London Underground during various events such as Steam On The Met or Met 150.



To pay homage to this marvellous maroon machine we are releasing several red-hot liveries, each covering a part of its history with the Metropolitan Railway, London Transport, and throughout preservation.



Each model is an exceptionally high-quality die-cast metal and injection moulded plastic construction and is fitted with sprung buffers, a Next18 decoder socket, and NEM coupler pockets. When coupled with the user-fitted tripcocks and air/vacuum hoses it is one exceptionally detailed model. The 2013-2020 condition variants of MET 1 (SKU: 909004 and SKU: 909504) also come fitted with era-specific air brake equipment within the cab for a more prototypical look.



Available in DCC Ready (RRP £179.95) and DCC Sound Fitted (RRP £279.95) versions you can paint the town (and your layout) red by pre-ordering your 00 scale [Metropolitan E Class](#) now! You can grab yours directly from our website or one of our many official retailers. Just be sure to order before our order books close on the **11th of September** to avoid disappointment.

Want to see it in action first? Click on the video below to see Met No.1 in action on 'Wendover'.



GET MET NO.1 BEFORE IT'S TOO LATE

Some N Gauge TINGS

Don't worry we aren't going to try too hard to sound "down with the kids", because we will fail epically. Instead, we are going to give our N gauge fans the update they have been so patiently waiting for (well most of you have been patient...).

It's Showtime - The International N Gauge Show



That's right, Rapido Trains UK will be at [TINGS](#) for the very first time. The show will be held on Saturday the 9th and Sunday the 10th of September at Warwickshire Event Centre, and you'll find us at stand number 25. We have plenty to talk about and some exciting progress on our N Gauge projects, so make sure you pop by our stand and say hi.

N Scale OAAs in tooling



BR and modern-era N gauge fans will be pleased to hear that our upcoming [BR Diagram 1/191 OAA Open Wagon](#) packs have moved on from the design stage and have gone to be tooled. These brand new 'N' gauge models capture the distinctive look of the real thing perfectly and are available to pre-order in six different liveries and convenient packs of 3 models each with different running numbers. These will be the perfect wagons to complement our upcoming Peaks.

ORDER YOUR OAA HERE

Possible Peaks



Speaking of Peaks, we are hoping to have some more news for you on the [BR Class 44 Diesels](#) by [TINGS](#), if we can get the final design and artwork completed by the show, we will have them available for you to pre-order. This has taken longer than planned because we have been trying to future-proof our design for later models of the Class 45 and 46 locomotives. When they go on sale you will be able to pre-order your model here: [BR Class 44 – Rapido Trains UK](#) or from one of our official retailers.

PRE-ORDER YOUR PEAKS

Product Updates

“Hooray, She’ll do”, “All aboard”- The Titfield Thunderbolt is on its way!

In true Titfield spirit, we have managed to overcome adversity and resolved our sound decoder shortage as swiftly as possible. With the sets all completed and checked they are now sailing towards the UK as we speak. You will be pleased to hear we are hoping to have them with you in October. You’ll be racing towards Mallingford with the Reverend at the controls before you know it.

We still have a handful of them left on our website, and plenty of our official retailers have stock of this highly anticipated pack. You would not want to end up like old Pearce and Crump and miss out, would you?



PICK UP A TITFIELD PACK NOW

OAA (00) on the High Seas

It's not only the N gauge counterparts that have progressed this month, as the 00 gauge [BR Diagram 1/191 OAA Open Wagons](#) are now complete, packed and on a boat heading for the UK. Once we have received them we will be checking them over and getting them sent out as swiftly as we can.

If you are still looking to add these to your collection and haven't pre-ordered them yet there is a limited number available directly from our website, and many of our official retailers will be stocking them once they arrive.

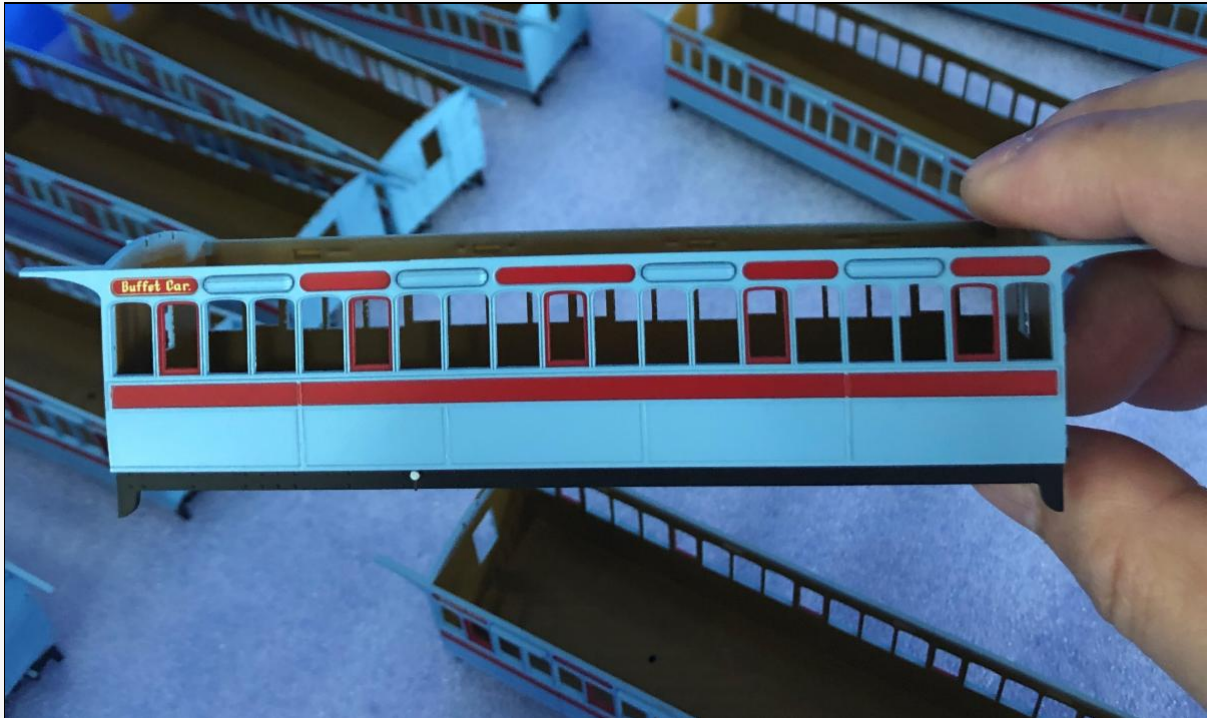
ORDER AN OAA NOW

Wisbech and Upwell Production News



Our much anticipated GE tramcars are receiving their final decoration in the printing room.

We have some good news from our factory. The upcoming [Wisbech and Upwell train packs](#) and [tramcars](#) are being assembled and are currently having the finishing touches added to them. As you can see from the pictures above and below, things are moving along rather well.



Also in progress is our Titfield Buffet Car - these will arrive at the same time as the standard cars.

We are hoping to have further updates for you next month and subsequently have them with us later in the year. We will keep you posted and have more to show you soon. In the meantime, enjoy these work-in-progress pictures.

ORDER YOU W&U TRAMCARS TODAY

Not Quite Mink, Not Quite Ready

The [Not-Quite-Mink](#) Gunpowder Vans are well on their way to being completed and as you can see from these production photos our factory has sent us of the L&Y and NE versions they are looking rather smart. Don't forget that Gunpowder wagons were seen across the length and breadth of the country, and we have tried to represent the various designs in this respectful tribute.

With plenty of pre-grouping and interesting liveries to choose from we are sure any one of these will go off with a bang in anyone's collection.



Great progress is being made with our "Not-Quite-Minks" which we hope will be delivered later this year.

GRAB A "NOT-QUITE-MINK" QUICK

Bedford OB Updates

In last month's newsletter, we noticed a minor issue with the Bedford OB coaches. Soon after the newsletter went out, we decided to have another look over our research for each of the variants of these upcoming models. We have obtained additional photographic evidence which will result in us making further tweaks to improve the accuracy before we put it into production.

After going over them with a fine-toothed comb, we noticed the following:

1-SKU 920006 - Edinburgh Corporation. The license plate number will be changed from GWS 468 to GWS 466 and the fleet number to X22.



2-SKU 920009 - West Yorkshire. The bodyshell has been changed from one that features roof windows to an alternative that has no roof windows but does have round indicator lights. This is because the updated bodyshell better matches its appearance before it was rebuilt in 1957. The rebuilt form (and its current preserved appearance), though it has roof windows like our first choice, does not match our tooling at all, with a different style of trim with no flash and two extra windows.



3- SKU 920005 - Southern Vectis. We have changed the bodyshell design to one that has a bigger rear bumper as it matches the real-life example better. We also would like to manage expectations as these changes have had an understandable impact on production time frames. This is simply because we keep holding the factory back from progressing until we are confident in the model's accuracy.



As such, we are sorry to say these may be a little further down the road than initially intended or advertised. Keep an eye on future newsletters and social media posts for further updates on this project.

What about everything else?

We have made good progress on lots of projects that we haven't covered in this month's newsletter, and we know everyone is wanting their favourite project to be at the top of the list. So, we thought we would sum up the current progress and target production dates for anything we haven't already covered on a handy webpage that you can view [HERE](#).

[VIST OUR DELIVERY SCHEDULE](#)

Rapido Recommends

As much as we may like to, we cannot do everything ourselves. The hobby is filled with manufacturers who make fantastic add-ons specifically for our products. In the spirit of cooperation we love to showcase some of these fabulous items so that everyone can enjoy them.

Go Figure

That's right, you asked, and we delivered. Well, by that we mean we asked our friends at [Modelu](#) very nicely. We have been inundated with requests for interesting figures for pretty much every loco we produce and more since we popped the pictures of the SECR 6-wheel brake van in last month's newsletter.

As such, we thought it would be foolish to not pass this on to the guys at [Modelu](#) and let them know your most requested figures so far. You will be pleased to hear they have kindly obliged to add as many of them as they can to their range. They are not quite ready for release - keep an eye out for the

September [Modelu](#) newsletter to find out more. Until then here is a teaser of one of the many projects to come...



Lots of Puff!

We sent the clever chaps over at [TRS Trains](#) one of our decorated samples for our forthcoming [15XX](#) models to see if they could work their magic. After a little head scratching they have managed to incorporate their water based synchronised steam systems into this mighty tank loco. Check out the video below to see how it looks!

TRS TRAINS



[TRS Trains](#) offer a custom fitting service and will happily add steam effects to your [15XX](#). Find out more and visit their website by clicking on the button below.

[CLICK HERE TO VISIT TRS TRAINS](#)

The Big (and little) Finale

Beauty and the Beast – two new locos...

As mentioned earlier in this newsletter this month we posted a teaser on our social media pages about three unannounced projects going into tooling - one of which has been announced above. The unintended consequences of this is that rumours started spreading across social media about the possible projects – two of which happened to be true but not part of our 'three in tooling' items. This led to a quandary – do we keep quiet and let the rumours spread and possibly spoil the project, or do we join in with the fun?

Well, naturally the team at Rapido Trains UK like to have some fun so we thought we best join in and fan the flames further by posting two further teases.

**RAILWAY EQUIPMENT ORDER S 160
FOR PERSONNEL ONLY**

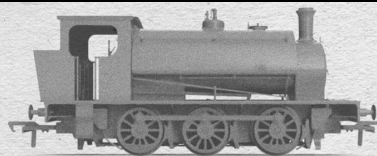
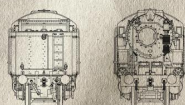
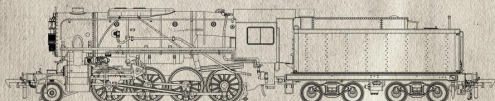
TO: ALL OO MODELLERS FROM: RTUK SUPREME HEADQUARTERS

CLASSIFIED:

THE WAR DEPARTMENT REQUIRES HEAVY FREIGHT LOCOMOTIVES
SUITABLE FOR USE ON THE RAILWAYS OF GREAT BRITAIN
(RESTRICTIVE LOADING GAUGE).

RTUK RECOMMEND A LARGE NUMBER OF S160 CLASS LOCOMOTIVES
HIGH QUALITY
HEAVY HAULAGE CAPACITY
MUST BE ABLE TO NEGOTIATE 2ND RADIUS TRACK
SEE OUTLINE DRAWING BELOW

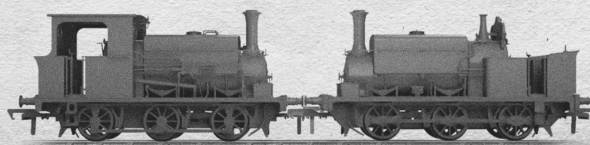
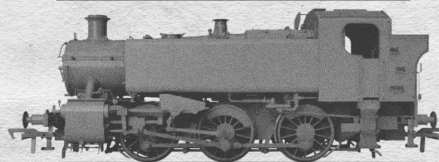
FURTHER INFORMATION TO FOLLOW IN OUR NEWSLETTER
DATED 24TH AUGUST 2023



RAPIDO TRAINS UK
STAPLEHURST ENGINE WORKS, KENT

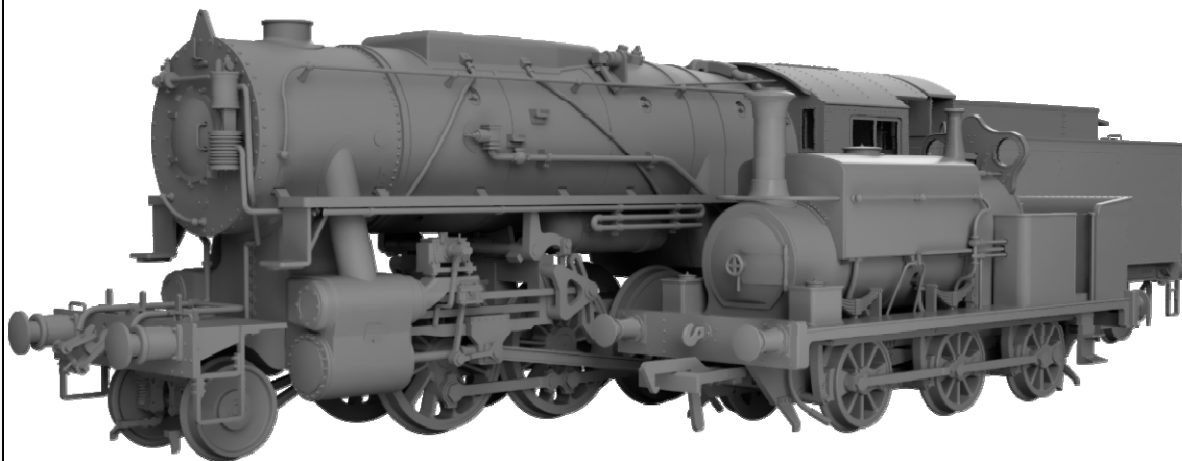
16.5mm gauge constructed to 1:76.2 scale
New builds and ex-mainline stock a speciality

Locomotive tank engines for industrial and light railway use



Now the result of this is a LOT of people got very excited and we once again became inundated with phone calls, emails, direct messages and smoke signals asking if the teases were true.

Well, we are extremely pleased to say they are and we would like to introduce to you Beauty and the Beast...



The Beauty - Manning Wardle L Class 0-6-0

Since Rapido Trains UK started we have been asked to produce a small industrial locomotive suitable for industrial and light railway use. With Andy's interest in such things, we didn't need asking twice.



Fifteen years ago, our General Manager Andy passed his steam loco driving test on “Matthew Murray”, an 'L' Class built by Manning Wardle in 1903 and residing on the Middleton Railway - a stone’s throw from its birthplace. The railway is also home to a sister L class “Sir Berkeley”. This type has never been produced in OO gauge in any form so it’s no surprise that we opted to produce this model.

The L class were dainty and attractive little locomotives with double-bossed wheels and a variety of bolt-on options the purchaser could add. The resulting engines were unmistakably Manning Wardles.

Our model is in the final design stages and will feature a number of tooling variants to allow for open and closed cabs, different pipework layouts, different frame styles and different wheels among others.

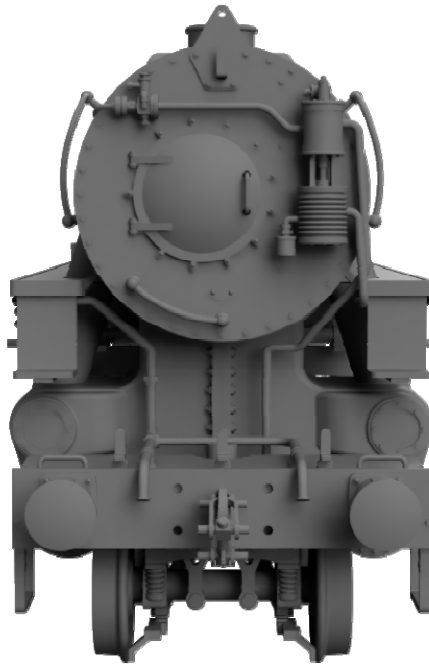
We are currently finalising the design and until then will keep the planned list of liveries, physical specification and prices close to our chest to provide a little more excitement later on.



"But why does anyone think you are making it?" we hear you ask. Well, when we visited the Middleton Railway earlier this year to record the sounds of the Y7 we also recorded "Sir Berkeley". Obviously, this drew lots of attention and we were even caught on camera which may have fed the rumours.

The Beast – The USATC S160

Love them or hate them, nearly everyone has a view on them – the S160 will be joining the Rapido Trains UK fleet.



Having been in the top 10 of various wishlist polls for many years, the S160 has been one of our most requested models. Coupled to that, as we are a company with links to North America it seemed a no-brainer for us to make a model of an American-built loco that operated in the UK.

JASON: You know I'm Canadian, right? And so is Sidura?

RAPIDO UK: Yes, but still. Canada is close to Ameri-

JASON: And you know Rapido Trains Inc. is based in a suburb of Toronto, Ontario and not Toronto, Kansas, right?

RAPIDO UK: The factory has some new TurboTrain samples for you to look at.

JASON: Sorry - gotta go!

RAPIDO UK: Thank heavens. Now where were we?



Designing the S160 has not been the easiest of undertakings. We have been working on this alongside our other projects for well over a year. No two preserved locos are the same, and there are even differences between the locomotives as built because they were supplied by several different manufacturers. After the war, the engines saw service all over the world and were heavily modified to suit their new operators' requirements.

Our plan is to produce models of the original locomotives 'as built', when they were seen across the entire country during the Second World War. We will also produce tooling to allow for several preserved examples to be modelled as closely as possible.



It's a little early for us to announce which exact locomotives and liveries we will be producing. Rest assured we will share the news as soon as we are able.

JASON: See it says "U. S. A." there and not "CA. NA. DA."

RAPIDO UK: Can we get on with this newsletter?

JASON: Can you make one that says "CA. NA. DA."?

RAPIDO UK: Uh... Sure. Did you notice the factory is printing tiny antimacassars on your TurboTrain seats?

JASON: Right. Gotta go again. Remember me to Gallifrey!

RAPIDO UK: Jason? Hello? OK - I think he's actually gone now. And we're not making a "CA. NA. DA." S160, so don't even ask... 🙄

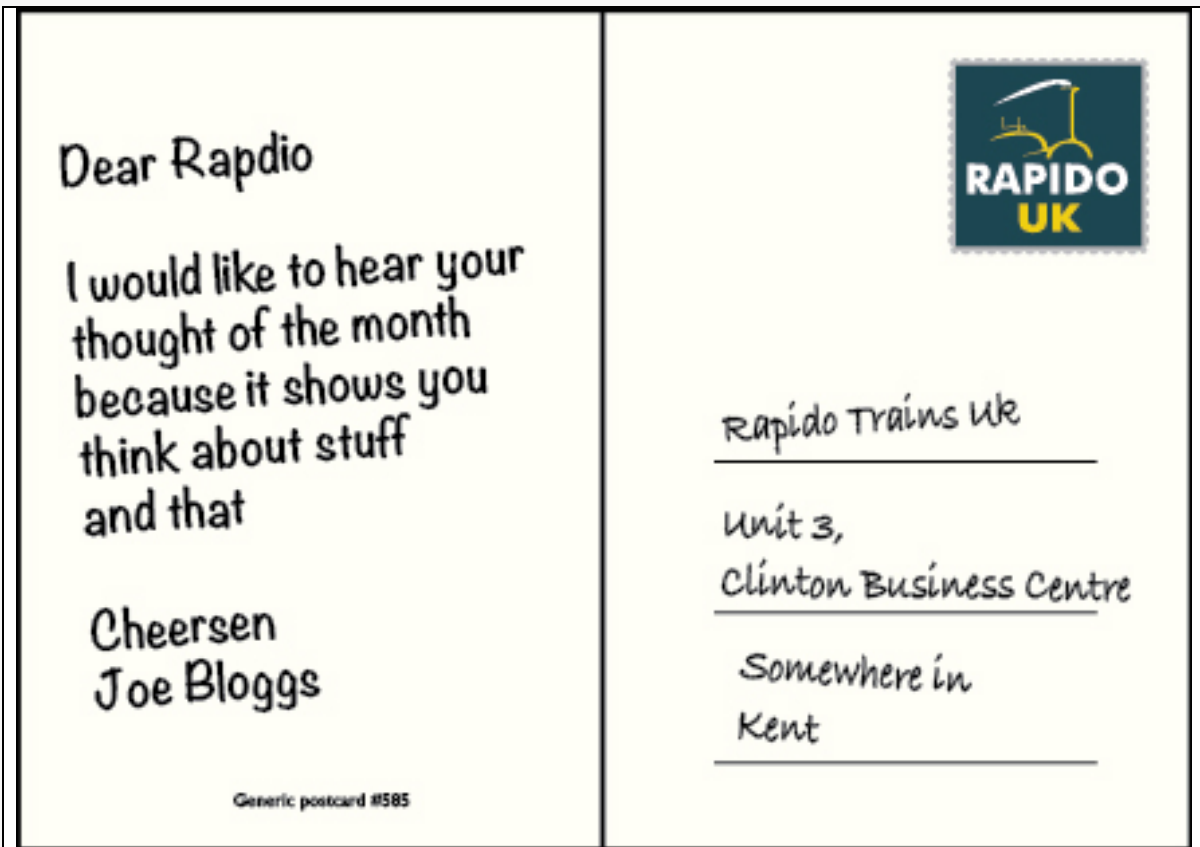
Thought of the Month

Do we really need to do Thought for the month?

What are everyone's thoughts, do you like them or not?

Have you got a burning (and inoffensive) question you would like to ask our readers?

Answers on a postcard or by email, please...



Well, that's it for another month. We hope you have enjoyed the updates and news – don't forget to place your orders if something takes your fancy.

See you at TINGS and best wishes,

The Rapido Trains UK Team

You can write to us at Rapido Trains UK, Unit 3, Clinton Business Centre, Lodge Road, Staplehurst, Kent TN12 0QF. Alternatively, you can call us on 03304 609496 or you can e-mail us at customerservice@rapidotrains.co.uk

Check out our YouTube channel, Facebook page, Instagram and Twitter!



Rapido Trains Limited | Rapido Trains Ltd, Unit 3, Clinton Business Centre, Lodge Road, Staplehurst, TN12 0QF United Kingdom

[Unsubscribe news in@modellismoferroviario.it](mailto:in@modellismoferroviario.it)

[Constant Contact Data Notice](#)

Sent by customerservice@rapidotrains.co.uk powered by



Try email marketing for free today!