



THE OXFORD DIE-CAST

GLOBE

PRODUCED FOR THE OXFORD DIE-CAST COLLECTORS CLUB

P.O. Box 519 BERKHAMSTED, HERTS HP4 1YR

TEL: 01442 879996 FAX: 01442 877703 WWW.OXFORDDIECAST.CO.UK

Issue 21

UK & EIRE £2Guineas (£2.10) USA \$5

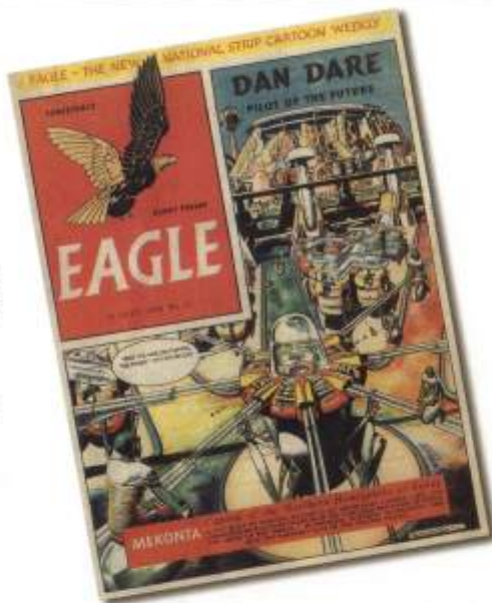
THE EAGLE

The action packed adventure comic launched in 1950 to cessation in 1967. 17 years of bliss and excitement.

Dan Dare - who can forget him on the front page with his trusty mate Digby (Taff and Dusty are the modern versions) - Dan was hailed as "The Pilot of The Future" as he cruised through outer space, coming into contact with the 'Treens' (those green little men) and headed by 'The Mekon' lord of the 'Treens'.

Then there was little Tommy Walls - always into an adventure and danger - only to be rescued by the man in the Walls ice cream van.

What about the centre spread - it was marvellous, a submarine sliced open with a description of all the working parts, or an aeroplane or a motor car. Memories of the Coronation coach flood back!



Pure nostalgia!

- Don't forget PC49 - Harris Tweed and Skippy, all great favourites.
- The educational side of the Eagle was also fantastic with Football skills by Billy Wright, Boxing by Freddie Mills and Cricket with Laurie Constantine.

Then the historical - 'The Great Adventurer' Cortez Conqueror of Mexico!

And finally, 'Riders of the Range' with Jeff Arnold (this later became Jeff Arnold and Riders of the Range).

This is the first in a new theme of comic liveries.

Model No: CC001 Edition: 1500 pieces



St. John Ambulance



The St. John Ambulance brigade of Royal Berkshire have commissioned this delightful Model T ambulance.

Every fete - football match - pop concert - you name it the wonderful St. John Ambulance Brigade will be there.

A volunteer group of people trained in First Aid, who give their time freely and willingly to this worthy cause.

Model No: 127T Edition: 1750 of which 500 are being made available.

See new releases.



A word from Michael

Summer is on the wane - its seems only a few weeks ago we were waiting it's arrival. It's not been a good one has it?

Well to take you back to longer summers with glorious weather, we have a feast of nostalgia in this Globe. The 'Battle of Britain set' - 'Corner Shop' - 'Cigs' and 'Comic Cuts'. The series sets are great and lets members choose a theme.

Also, if you collect specific models ie, 'T's' you can still do so, picking them from the various ranges. We envisage complete sets being of great future value, not yet, but in a few years time! 'The Corner Shop' is planned 18 to 24 vehicles. 'Comic Cuts' 18 to 24 vehicles and the 'Cigs' at least 36 vehicles.

Thank you to all who have sent me fag packs - they are wonderful and please keep them coming. Also, if you have old comics or photos - I would love to receive them (even photocopies). The Eagle was my No. 1 though and that's out today!

Old Dawsons have done it again by allowing only a small release on their RM's, but I do know they still have some blue ones (RM11) in stock at Dawsons Rentals Milton Keynes. Please don't mention me!

The new pages for the catalogue are being prepared ready for January, February, March distribution - a whole big package bringing you right up to date.

Enjoy your Globe and you all take good care.

Michael Johnston Allan

PS Apologies the spellings in the 'Dunkirk set' - 2 mistakes 'Navel' should have been 'Naval' and 'Marshal' not 'Marshall' - sorry and thanks for your letters.

Platinum Members note
All vehicles are available at 7-4 in this issue of Globe

New Releases

Two New Routemasters

Commissioned by Dawsons - just 1050 being manufactured of which Dawsons will be taking 600 - so be quick, there were a lot of disappointed members for their last model.
Model No: RM19 Edition: 1050



Commissioned by AstraZeneca an edition of 1450.

This model not yet available to members.
Model No: RM20 Edition: 1450



Other New Releases

Model A
for 'Sutton Trust' - 1000 are being manufactured with 600 going to Sutton Trust only 400 available.
Model No: A010 Edition: 1000



Model A
for 'Bristol Rovers' Football Club with an edition of just 800 of which 500 are going to Rovers only 300 left!
Model No: A011G Edition: 800



AEC Bus
for 'Crystal Palace' Football Club - the edition is 1250 with 400 available to members.
Model No: B66 Edition: 1250



Taffs Column

A competition on our web site recently posed the question - "Name the Oxford Die-Cast vehicles that have been produced using red wheel hubs".

We had an incredible response and the winner was Graham Tattersall. The vehicles are 116 'PACE', 191 'Corporation of London', CO22 and CO17 'Broncho Bill' and of course the circus set which contained the publicity vehicle, 'Madam Zelda' and the elephant water tanker.

It's worth remembering that several of the liveries that we feature are a result of information, pictures and ideas that come from our members. Keep the information flowing in and maybe one of your favourite liveries will appear on a future release.

Whilst researching the comic livery featured, I came across several old Eagles; believe it or not, Dusty says he was too old at the time to remember its launch! He also insisted that 'Roy of the Rovers' was in his comic. I'm not so sure and being so young I was wondering if anyone could confirm this!!

'Roy of the Rovers' was Hotspur and that was old!

Membership Cost Changes

As from October 1st 2000 the membership charge will be £12.00 Standard Membership and £16.00 Platinum Membership.

The reason for these slight increases are as follows.

- Increased production costs
- Increased postal costs
- Increased printing costs
- However, the cost of your vehicles will stay the same - no increase is planned!
- Postal contributions will only be requested on special boxed sets (as present).

Plus with renewed membership each year you now will receive a **FREE** vehicle of your choice!

Plus of course your annual **FREE** rejoining gift and your **FREE** Christmas vehicle as well. So what does it all add up to.

Old Standard Membership cost £7.50 - increase cost £4.50 = **£12.00** (US \$18)

Old Platinum Membership cost £10.00 - increase cost £4.00 = **£14.00** (US \$22)

But receive an extra vehicle **FREE** of your choice worth **£4.95** (If you look at it like that, membership actually comes down!).

Plus, Platinum Members receive their Platinum Members vehicle too! This means a Platinum Member receives **3 FREE vehicles per year** worth £14.85.

Plus a free Membership rejoining gift too!

Platinum Members also get 7-4 purchases from two Globes per year as well - all for £14.00 per year (US \$22).

New Catalogue Pages

We are currently preparing to photograph some 150 vehicles which will mean 26 new pages for your catalogue. Also, 4 new identification tab pages will be added.

The new sections will be 'The Cigarette' vehicles and the 'Model A's'. Plus there will be new sections for the 'Corner Shop' and 'Comic Cuts'.

There will be 3 more pages (that's 9 sets) of 'Mini Classics'. The Model T brought up to date - 099T through to 123TGE. 4 Chevi pages from C019 - C042. 2 pages of Routemaster, 4 pages of AEC old buses B43 - B66. Finally, 6 pages of Bullnoses 172GU - 203G.

Quite a bundle to send our members. These pages and tab inserts will go out with January membership renewals and February membership renewals, with the balance sent out in March to all of our other members.

Up Up and away with 'The Worlds favourite airline'.

In the 1960's larger aircraft such as the 747 jumbo's were introduced by the airlines.

With them came increased passenger traffic. Thus the Routemaster were introduced to handle this mounting number of passengers in the transfer from terminals.

British Airways also operated a service from London to Heathrow, as check-in could be undertaken in London at the bus terminal, leaving

their passengers ready to board on airport arrival. The RM's could often be seen towing a luggage carrier behind.

The B.A. service was operated by London Transport and was introduced in 1966 and lasted until 1979.

Our RM carries an advert for B.A.s. Australian service from Heathrow.

Isn't it amazing that prices have almost stood still in air travel for over 20 years!

Model No: RM22 Edition: 2000



The Chairman's going into an asylum!

At least, he ought to be.

He's decided that because of the response to the 'Special Feature Vehicle' in last months Globe, he would go one better! But he hasn't he's gone 2 better. Here's what the madman's proposing!

Buy the special 'Hearing Dogs for the Deaf' Model T No. 051TG - first launched in July 1997 - for just £2.50 and you get a second one FREE.

Yes, 2 'Hearing Dogs for the Deaf' Model T's for just £2.50. That's £1.25 each - one for you and one as a gift!

Crazy! Crazy! Crazy!

Just a couple of conditions though.

1. You cannot vary the offer.
2. If only ordering these vehicles this time please include 50p post.

We will let you know his progress!

This offer is not available @ +3, 6-4 or 7-4 purchasing (US members \$3.50 for both).



THE CORNER SHOP



native Glasgow where he opened a small grocery store.

Thomas Lipton soon had stores running up and down the country and by the age of 30 was close to being a millionaire.

He later developed the business into tea and then into tea bags.

Lipton's the grocers. Known to most people up and down the country.

At the age of 14 Thomas Lipton (1850-1931) stowed away on a ship bound for New York where he later was employed as a grocery clerk.

Lipton later returned to his

Sir Thomas Lipton died in 1931 and having no heirs or decedents, left his great fortune to the City of Glasgow.

The third in the series. Our Model A is shown delivering tea at the price of just 3/- per lb. Who could resist!

Model No: CS003 Edition: 1500

RAIL 2000

There we were telling you about 'Rail 2000' and looking forward to seeing you all, with Taff sharpening his pencil to sign autographs and are now advised at

the end of July by the organisers "it's cancelled"!

Luckily, only some of the product has been manufactured and the first one released is the commissioned show model 'Cavalcade of Steam' on an 'A'.

We expect this to be quite a desirable vehicle as it features this planned non event!

Model No: A007.

Edition: 2500.

See new releases.



Mini Classics

Rail delivery vans

The railway theme continues as we feature these 3 rail delivery vans.

In order to get items to the customers, many delivery companies set themselves up to provide quick passage of goods from the railway station to the factories, shops and homes.

With the railways providing the main and best service by land, chaos often happened as trains arrived and

various specialist companies fought to be first loaded!

Many will remember these old liveries of 'Chaplin's' - 'Carter Paterson' and 'Hays Wharf Cartage Co'.

Each of the vehicles comes as a set of 3 and is supplied with it's own garage display.

Set No. 9 Edition: 2000



Battle of Britain Anniversary Set

This wonderful and poignant set comes in its own display box with a brief history leaflet incorporating the set number from its edition of just 1500.

Chevrolet 1940

Dedicated to those wonderful airmen who served in the allied defence of the British Isles.

To echo the words of Sir Winston Churchill "When so much was owed by so many to so few"-The Battle of Britain 1940!



Polish Air Force - Those magnificent men in their flying machines

The gallant airmen - most of them little more than boys with limited and in many cases 5-6 hours flying experience took to the skies in what is heralded as 'our finest hour' and the turning point of the war. What a wonderful spirit and courage to know as you took off, your chances of returning were less than even. Brave young men from many walks of life. Different allied forces formed a fighting force to conquer the skies.

Our model is dedicated to the Polish Air Force.



The vehicles in this set are available to all members at the usual 6-4 or 4-3., (Platinum 7-4) but there will be an additional charge of 50p towards postal charges for the special display box.

616 Squadron - Model A

One of the fighter squadrons was the famous '616' squadron. Formed in 1938 and initially equipped with Hawker Hinds. In 1939 it was re-designated a fighter squadron and re-equipped with Spitfires. In 1940 it downed 30 enemy aircraft during the Battle of Britain.

Battle Honours

Battle of Britain 1940.
North Sea defence and patrol 1941-44.
Northern France 1944. Germany 1945.



Air Raid Warden

The ground backup was recognised as an integral part of the overall war effort - not more so than the marvellous 'Air Raid Wardens' - called upon to always be in the vicinity of danger, making sure that Britain was camouflaged and blacked out at night, ensuring the public, if on the streets, were herded into the air raid shelters with the claxon warning sounding right into the raid. They gave their lives readily.



2 Spitfires fly over - note the Chevrolet (or Bedford).

It's Good News Week!

Now the stock is almost sorted at Neath, Taff has found some winners - all listed in the Price List as out of stock! (Plus others on end of edition).

Here they are:-

Model No. Model Available

Bullnoses

003	LoSalt	34
005G	ODC	10
007G	Lion	6
012G	Macaroni	66
014G	Outspan	62
017G	Tesco	25
043G	London Gas	19
048G	Stockleys	32
049	Sunblest	82
050G	Sunblest '50'years	64
054G	Stork	42

Bullnoses cont.

055G	Ben Shaw	42
057G	Chartridge Golf Club	31
064G	Millwall FC.	27
065	Charlton FC.	27
148G	J.S. Arms	65
020G	ODC Christmas 1994	138

Model T's

056T	Siebe	84
098T	Tomlinsons	5

AEC's

B5	Beaulieu	92
----	----------	----

He is still sorting, so maybe next Globe will find more gems! To make sure of your choice tel: **UK Customer Service on 01442 879996. US Customer Service on (770) 924 5443.**

*The Christmas vehicles 1994 were miscalculated and a further batch were manufactured. They really are good value. Write your order on reverse of order form accordingly.

CAPSTAN

This brand was another from the WD & HO Wills stable of products. Capstan available in brown packs **full strength** and blue packs **medium strength**.



There was probably a 'mild' as well, though we have no record of this one. We know of cork tipped, medium plain, medium, and several others.

Capstan was available in paper packs of 5's and card sleeve packs of 10's and 20's.

The product was manufactured in Gt. Britain as well as Australia, Hong Kong, Malaysia, India and Ireland.

This brand, like many others, Players, Senior Service etc., had a naval theme. The Capstan logo signifies a capstan as used to hoist the anchor on board ships and for moving heavy weights by means of ropes, cables and chains.

The cigarette theme is proving very popular and members wishing to collect the whole range might wish to pull their collection together today as earlier releases are reducing quickly.

Our special thanks to Mr. Taylor of Burnham for sending us so many old packs to choose from.

We are always grateful for old cigarette packs - so if you have any, please send them to Michael at Berkhamsted.

Our thanks also to other members who sent us packs in, each will receive a free vehicle of their choice.

This model number is CIG008 and the edition is 2000 pieces.