

**Da:** DCCconcepts <web@dccconcepts.com>  
**Inviato:** mercoledì 5 luglio 2023 14:00  
**A:** giuliano  
**Oggetto:** The Best Modern Image Platform Available - Bar None!

Missing bits? Not displaying correctly? [View this email in your browser](#)



## > ***New product available now!***

*We've been working with West Hill Wagon Works again! This mindblowing [modern-image platforms](#) are available **now!** Check out how amazing this will look on your layout:*

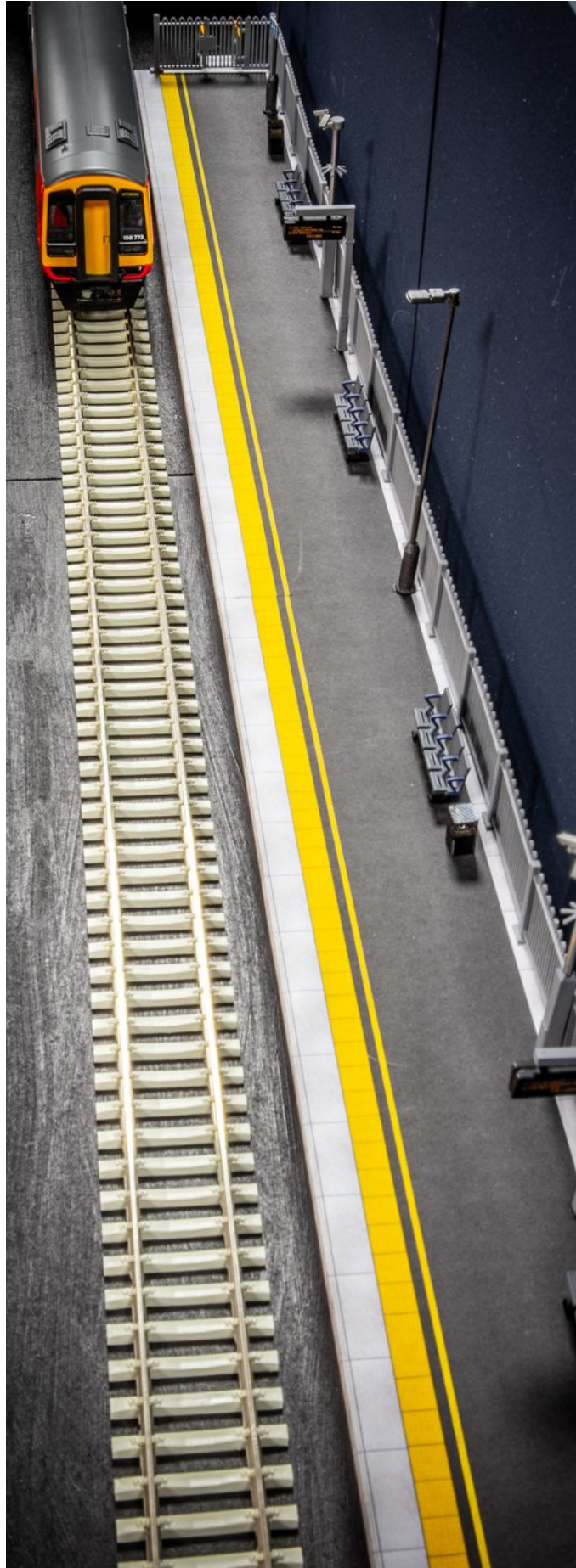


## **Modern Station Platform**

Easy to assemble 634mm (25") Modern Station Platform  
OO / EM / P4 Gauge

- Produces a scale-length 158ft platform (long enough for a 2-car DMU)
- Dimensions: 634mm long, 52mm deep, 18mm high.

- Add more length to the platform and keep extending as long as you require with our [Extension Packs](#)!
- Includes concrete base parts, lower grids, platform tops and self-adhesive sheets.
- [Railings](#), [steps](#), [seating](#), [CCTV](#), [platform signs](#) and [passenger information screens](#) available seperately.
- Working lighting available from [Legacy Skyline Lighting](#)!



Available Now for **Only £34.95!**

GOOD AVAILABILITY



> *Don't forget our 2023 Open Weekend!*

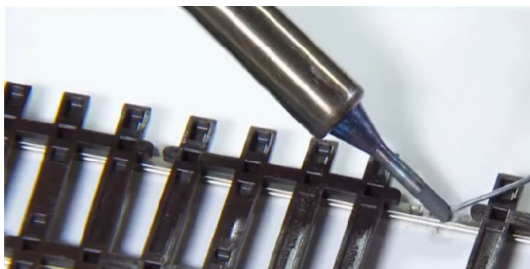
## Open Weekend - 15th & 16th July 2023



> ***An amazing weekend is planned! Here's some of the highlights...***

*After the huge success in 2022, we are once again throwing open our doors - come and visit completely free of charge, meet the team and get hands-on with our products!*

***We will also be delivering DCCconcepts courses at competitive rates, delivered by modellers, for modellers - available to book [now on our website](#) all courses include a 10% discount for use in our shop on the day!***



### Soldering

The black art of soldering - explained and demonstrated! You'll leave a master of the iron and have confidence to attack all those pesky jobs you've been avoiding!





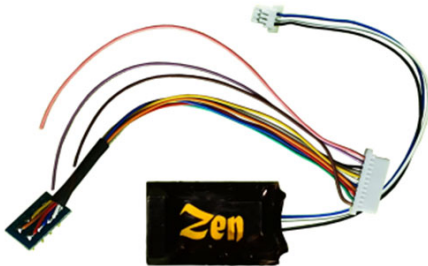
### [Weathering](#)

Get hints and tips from a weathering expert - learn how to add the ultimate level of realism to your models and get hands on with the powders and brushes!



### [Control Panel Building](#)

Learn how to build your own layout control panel with ESP! Discover how the system can simplify your wiring and produce a beautiful panel to sit at the heart of your layout.



### [DCC Decoder Fitting](#)

Thinking of converting to DCC, but you're uncertain of how to upgrade your locos? New to the hobby and want to know the best way to go with DCC fitting? This course will help you with both "DCC Ready" and "Hard Wire" installs!



### [Install Lighting - The Easy Way!](#)

Discover how to add building, platform and street lighting to your layout with ease! Both digital and analog methods will be demonstrated and you'll leave with everything you need to get started at home!



There will even be an opportunity to sit down and talk through any questions you have about railway modelling over a cuppa!

---

**> Plus even more attractions!**

*The great thing about being based in Settle is the rich railway history of the town! With so much here to see, there's some truly special experiences for you and your family to enjoy!*



[Find out what it's like to be a Bobby](#)

*Explore Settle Station Signal Box and learn how trains move around the rail network. Experience what it's like to change a signal or a point. Experience a way of life that's been a fundamental part of our railways for over 150 years!*



[The Museum of North Craven Life](#)

*Based in The Folly, a 17th Century "Gentleman's Residence" in Settle, the museum has a number of extraordinary collections telling the story of North Craven, as well as a stunning coffee shop where you can relax and enjoy some good Yorkshire hospitality!*



[DCCconcepts Switchback Layout](#)

*See our Switchback show layout in action and speak with the team who created it! Find out how a combination of Cobalt, Zen ABC and ESP work together to create this exciting model railway!*



[DCCconcepts Showroom](#)

*Our showroom and shop will be open all weekend for all your modelling needs - don't forget that we cater for all modellers, DC and DCC. A wide range of electronics, accessories and tools are available and our staff will be on-hand to assist.*





### [Tours Around Settle Water Tower](#)

Learn all about this amazing structure - built by the Midland Railway in the 19th Century. Now a family home, it's conversion into living accommodation was even the subject of a TV documentary. There will also be an opportunity to see the owner's collection of interesting vehicles!



### [Experience Mainline Steam!](#)

On Saturday 15th July, the "Cumbrian Mountain Express" will race through Settle headed South on it's return leg to Crewe - be on the platform to witness the raw power of steam. Traction will be provided from one of the West Coast engines.



### [JDM Models, Settle](#)

On Sunday 16th July, JDM Models in Settle will be open - an Aladdin's cave of locos and rolling stock and specialises in renumbering ready-to-run stock. Hiding above 3 Peaks Cycles - a real hidden gem!



### **Hungry? Thirsty?**

We will have a BBQ stand all weekend serving the usual goodness. Settle also has a plethora of takeaways, pubs, restaurants, bakeries and cafes to choose from - so you won't go hungry or thirsty!



### **Accommodation**

If you want to stay with us in Settle all weekend, or if you're travelling from further away, you can find a large number of hotels on [booking.com](https://www.booking.com) or you can stay in the [Premier Inn](#) at Gargrave which is only 15 minutes drive away from Settle!

> **Book your courses now!**

**The skills courses are very popular, and we have limited capacity so that we can give you the right amount of attention! You can book your course using the link below:**



DCCconcepts Open Weekend Courses can now be booked for the Open Weekend on Saturday 15th and Sunday 16th July 2023.

All courses are 1.5 hours long and delivered by modellers, for modellers. Each session will be tailored to those attending, so there are never more than 6 people in your classroom.

Please select "Click and Collect" as your shipping option to avoid postage charges. **If you select postage, this will be removed from your order prior to taking payment.**

You can attend as many courses as you wish, as long as they don't clash! Accommodation around the Settle area is available on booking.com, or there is a Premier Inn 15 minutes drive from Settle at Gargrave.

---

> **See you soon!**

*Whether you are attending a skills course, or simply coming along to enjoy all the other attractions and grab a burger - we're looking forward to seeing you here! See you soon!*

---





**With dealers all over the world - click the globe to find your local DCCconcepts stockist. Remember to support your local model shop!**

---

*Did you enjoy the contents? Please let us know. Don't be shy: We invite you to email us and discuss any changes you might like to see and welcome ideas for any "style" changes or additions we could consider to make more interesting reading.*

*Of course, if you have a specific subject that you would like us to cover, we will listen. Please email us at [web@dccconcepts.com](mailto:web@dccconcepts.com) or visit our forum at [www.dccconceptsforum.com](http://www.dccconceptsforum.com) and we will see what we can do.*

*Until then, thank you for sharing your valuable hobby time with us.*

**Getting more than one copy of this newsletter? This means you are on our mailing list in multiple categories. Simply click "unsubscribe from this list" below on all but one of your newsletters and you will only receive one copy in future.**

*Richard Johnson* and all of the staff at DCCconcepts



**Our contact details are:**

DCCconcepts Ltd, Unit E, the Sidings, Settle BD24 9RP

Telephone is +44 (0)1729 821 080.

Our UK Email address is [sales@dccconcepts.com](mailto:sales@dccconcepts.com)

**You will also find us 7 days a week, 24 hours a day at** [www.dccconcepts.com](http://www.dccconcepts.com)

 Share  Tweet  Forward



Copyright DCCconcepts.com, all rights reserved.

We hope you found this message to be useful.

However, if you'd rather not receive future e-mails of this sort from us, please use the links below.

You can [update your preferences](#) or [unsubscribe from this list](#).