

Da: Classic Construction Models <donotreply@wordpress.com>
Inviato: lunedì 5 giugno 2023 22:28
A: news_in@modellismoferroviario.it
Oggetto: [New post] Models & Mods: Graham May



Models & Mods: Graham May

Gary Peterson

Jun 5

"Models & Mods" is back to spotlight the modifications done to our models at home by coll with Graham May from Colorado about his incredible 1:48 scale Cat® 631G Wheel-Tractor Sc



1. Did you start with an existing model or build from scratch? If an existing model, wh

The model is a combination of two CCM models, the brass 637G push/pull and the diecast 6

2. Why did you choose this model to modify?

I see a lot of this model scraper in my area, I didn't think anyone was going to be making it,



3. Can you walk us through the process of building these modified components? Materials you had, etc.?

I made a huge leap, after looking for a long time and not really finding any wrecked 637G models I could find. I had the 631K in hand already. Just needed to separate and re-connect them. I even though these are transported in one piece around here. The biggest challenge is the bowl hydraulic system to operate in the 637G's cylinders. I am also needing a decal for the bowl arms, just looking



4. How long did this project take you?

This was a pretty quick build just taking apart two models and building a new front bumper

5. Do you have any advice for other collectors looking to modify a model?

My best advice is to start with simple conversions, bucket swaps etc. until your confidence is a beginner, or faint of heart!







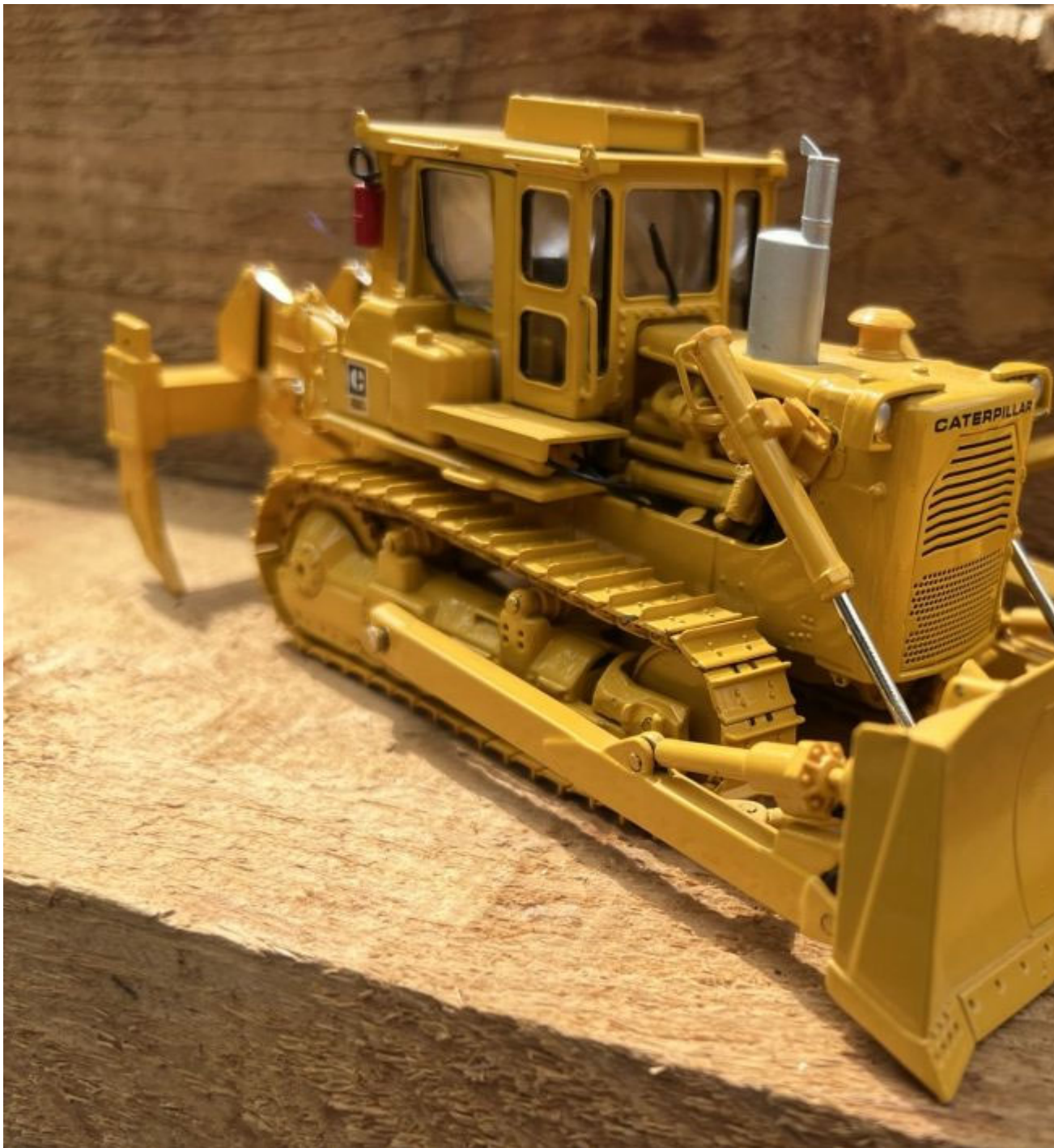
6. What project do you have in mind next (or are currently working on)?

I have many projects on the table, CCM wise Another D9H dozer with push blade and block top hammer air tracks and compressors, and a pair of D25 Cat trucks build up from resin cast seems to be enough time to build all that I would like to and my eyes are bigger than my tin backlog of things to build.



7. Any suggestions for Classic Construction Models on which model to make next?

CCM lets please revisit the 1:48th scale, my favorite, a large cat hoe, (5130B, 385B), I'm a scraper, (773B/D model, 769C/D), and for dozers there is definitely one that comes to mind (D9H) not quite completed properly.



Many thanks to Graham May for sharing off his amazing work. We must say that we are extremely appreciate you showing off a few other CCM modifications you have done, the Cat® D9H's are more great work from you in the future!

Want to be the next collector featured in a Classic Construction Models blog? Send us pictures of our models, to us via email sales@ccmodels.com and you might be the next collector selected.

[Comment](#)

[Unsubscribe](#) to no longer receive posts from Classic Construction Models.

Change your email settings at [manage subscriptions](#).

Trouble clicking? Copy and paste this URL into your browser:

<https://ccmodels.com/models-mods-graham-may/>



Get the Jetpack app to use Reader anywhere, anytime

Follow your favorite sites, save posts to read later, and get real-time notifications for likes and comments.



 WordPress.com

Learn how to build your website with our video tutorials on [YouTube](#).

Automattic, Inc. - 60 29th St. #343, San Francisco, CA 94110