

SHARE:

[Join Our Email List](#)

[View as Webpage](#)

A dark blue banner featuring the Bachmann logo in the center, which consists of a red circle with a yellow 'B' and the text 'BACHMANN' above and 'QUALITY SINCE 1833' below. Surrounding the logo are various brand names in different fonts and colors: 'EZ COMMAND', 'Spectrum', 'Williams', 'Plasticville', 'SCENE SCAPES', and 'E-Z-COMMAND'.

**DEALER NEWS**

A detailed HO scale model of a coal train crossing a wooden trestle bridge. The train consists of several hopper cars. The central car is black with 'NKP 34078' and 'NICKEL PLATE ROAD' printed on it. To its right is a red hopper car with 'R.I. 10400' and 'R.I. 10400' printed on it. The background shows a miniature landscape with trees and a small building.

**Build Your Coal Train**  
with Bachmann HO Scale 40' Quad Hoppers

[Shop Now](#)

# HO SCALE

Designed primarily for hauling coal, the 40' Quad Hopper could be found delivering this vital commodity across North America throughout the mid-to-late 20th century. Usually found in bulk-unit consists traveling from mines to large industrial customers such as factories and power stations, Quad Hoppers could also be found on mixed freights when making single-car deliveries to smaller industries. Later in their lives, many Quad Hoppers were converted for Maintenance-of-Way use and were pressed into further service hauling and dumping ballast along the railroad. Some of these cars still exist in this role today, while others have been preserved in their original form. With vibrant paint schemes to choose from, and features such as a removable coal load, precision graphics, blackened-metal wheels, and body-mounted *E-Z Mate*® Mark II Knuckle Couplers, the Bachmann 40' Quad Hopper will make a great addition to any HO Scale layout or freight car collection.

*A similar car on display in Shippensburg, Pennsylvania*



## In Stock and Ready to Ship





**NORFOLK & WESTERN #12986**  
Item No. 17607



**SOUTHERN #352450**  
Item No. 17604



**BOY SCOUTS OF AMERICA® MERIT BADGE**  
Item No. 17629





**CSX® #141948**  
Item No. 17618



**ROCK ISLAND #10468**  
Item No. 17608



**NICKEL PLATE ROAD #34078**  
Item No 17623

## Features Include

- rolling stock – fully assembled
- highly detailed painted bodies with precision graphics
- blackened, machined-metal wheels with RP25 contours
- body-mounted *E-Z Mate*® Mark II couplers
- non-magnetic, blackened-brass axles with needlepoint bearings
- Celcon® trucks
- added weight for optimum tracking performance
- HO Scale 1:87

[Click Here For Our Full Selection of HO Scale Quad Hopper Cars](#)

# Coming Soon



**CHRISTMAS - NP&S® CLAUS COAL MINES**

*Coming Late 2024*



## **Bachmann is coming to the Rocky Mountain Train Show!**

We'll be at the Rocky Mountain Train Show in Denver at the National Western Complex this Saturday, April 6th, and Sunday the 7th. Stop by our booth to check out our latest samples in person, ask a question of our knowledgeable team, or say hi! See you there!

**Learn more about the Rocky Mountain Train Show on their website!**





SHARE:

[Join Our Email List](#)

[View as Webpage](#)



**Take to the Streets in O Gauge**

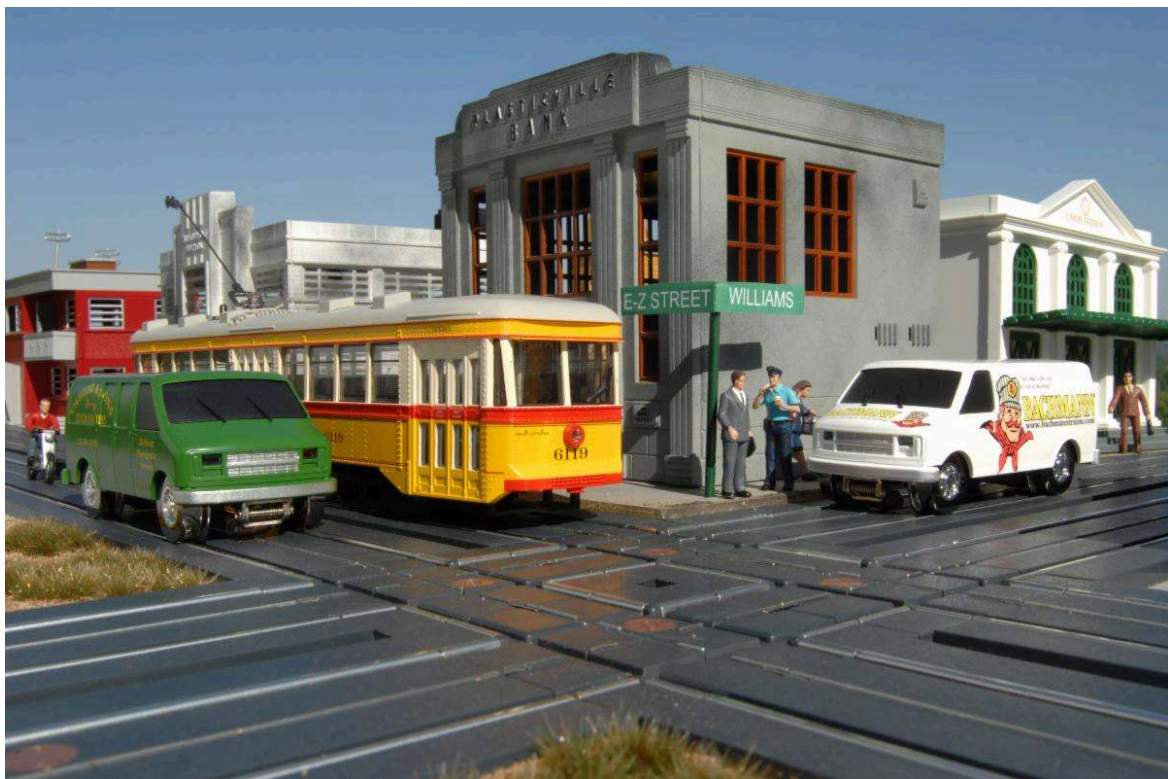
E-Z Street® Station Wagons Now Shipping

[Shop Now](#)

O  
SCALE

**Williams**<sup>™</sup>  
by **BACHMANN**

Step off the train and bring the streets and road vehicles on your O Gauge model railroad to life with Williams by Bachmann *E-Z Street*® products. Like our *E-Z Track*® system, *E-Z Street*® segments snap together and stay together to create realistic one-lane or two-lane roads and intersections, adding a new dimension of operational fun to your layout. *E-Z Street*® 1:48 scale vehicles are fully assembled and feature die-cast construction, metal wheels, and highly detailed painted bodies with precision graphics. Now you can add to your animated O Gauge street scenes with four new station wagons in classic gold and blue, and in both ambulance and hearse configurations.



Bring your layout to life with Williams by Bachmann *EZ-Street*®!

**New and Now In Stock**





**STATION WAGON - GOLD**  
Item #42755



**STATION WAGON - LIGHT BLUE**  
Item #42744



**AMBULANCE**  
Item #42743



**HEARSE**  
Item #42742

### FEATURES INCLUDE:

- fully assembled operating vehicle
- highly detailed painted body with precision graphics
- die-cast construction
- metal wheels
- operates on *E-Z Street*® 16" diameter curves or greater
- O gauge 1:48 (runs on AC power 3-rail straight or curved track)
- may also operate on some three-rail turnouts and crossovers

*E-Z Street*® vehicles feature forward operation only and can run on the *E-Z Street*® track system or on 3-rail track. Bachmann's vehicle lineup features classic sedans, delivery vans, station wagons, and commercial vehicles.

[Click Here To See All Of Our E-Z Street Vehicles](#)

## New and Now In Stock



Start your *E-Z Street*® journey with the *E-Z Street*® Oval Track Pack, featuring a 44" x 24" oval of *E-Z Street*® road track; designed to fit comfortably inside a standard oval of Williams by Bachmann® 3-rail *E-Z Track*®. The contents of this set are fully compatible with our line of *E-Z Street*® expander pieces.



### **E-Z STREET® OVAL TRACK PACK**

Item #00275

#### **Set Includes:**

- 8 pieces of 21" diameter curved E-Z Street® track
- 4 pieces of 2.5" straight to curve E-Z Street® track
- 2 pieces of 2.5" curve to curve E-Z Street® track
- 2 pieces of 2.5" straight to straight E-Z Street® track
- 2 pieces of 5" straight E-Z Street® track



- 2 pieces of 10" straight E-Z Street® track
- *E-Z Street*® power connector wires
- Illustrated instructions



SHARE:

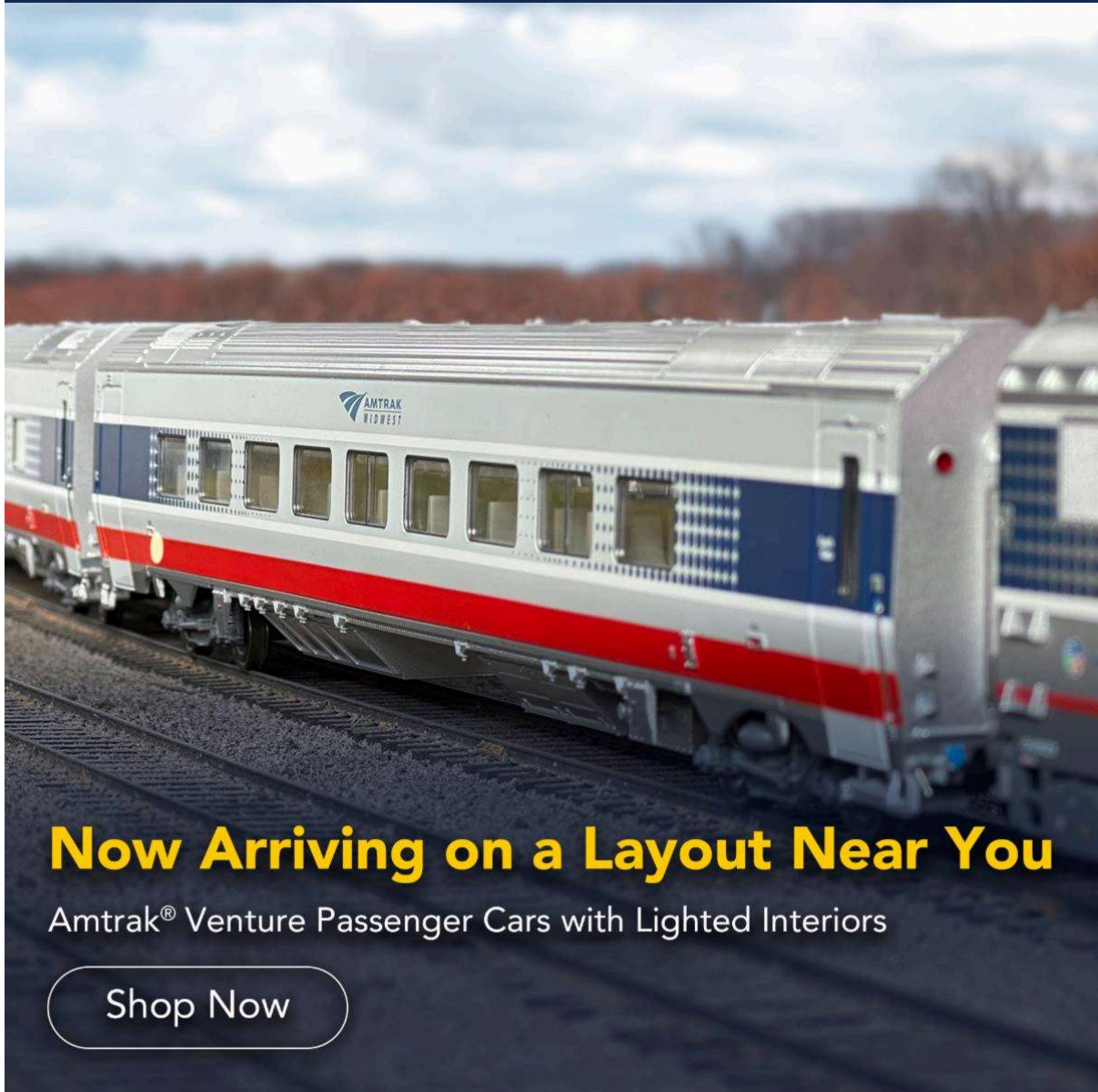
[Join Our Email List](#)

[View as Webpage](#)



**BACHMANN**  
QUALITY SINCE 1833

**DEALER NEWS**



**Now Arriving on a Layout Near You**

Amtrak® Venture Passenger Cars with Lighted Interiors

[Shop Now](#)

# HO SCALE

The Siemens Venture is the latest generation of medium-distance passenger railcars for North America. Constructed by Siemens Mobility in California, the Venture cars currently see use on Amtrak® state-supported services in the midwest and California, while VIA Rail Canada™ has introduced the series on corridor services in eastern Canada. The Bachmann Venture Cars have been developed in collaboration with Siemens, using original design documentation to ensure prototypical accuracy.



**New and Now In Stock**





**AMTRAK MIDWEST<sup>SM</sup> COACH #4001**  
Item No. 74501



**AMTRAK MIDWEST<sup>SM</sup> COACH #4004**  
Item No. 74502



**AMTRAK MIDWEST<sup>SM</sup> COACH #4008**  
Item No. 74503



**AMTRAK MIDWEST<sup>SM</sup> COACH #4015**  
Item No. 74504

### Features Include

- all new tooling
- highly detailed bodies with precision graphics
- road-specific exterior configurations
- fully furnished and lighted interiors
- undercarriage detail
- blackened-metal wheels with RP25 contours
- magnetically operated *E-Z Mate*<sup>®</sup> Mark II couplers

- non-magnetic blackened brass axles with needlepoint bearings
- Celcon® trucks
- added weight for optimum tracking performance
- performs best on 22" radius curves or greater
- HO Scale 1:87



**Functioning Controllable Marker Lights**



**Prototypical Interior with LED Lights**

[CLICK HERE TO SEE ALL OF OUR SIEMENS VENTURE CARS](#)







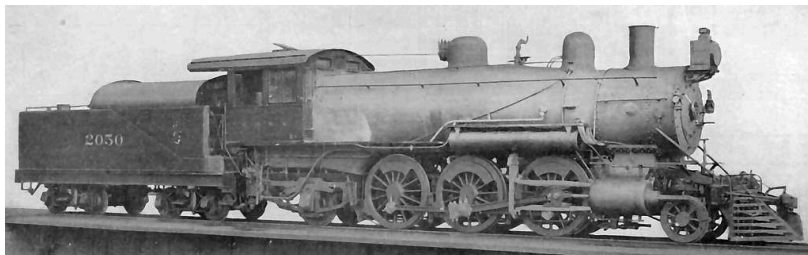
## Prairie 2-6-2 Steam Locomotives

Two New Road Names Now In Stock

[Shop Now](#)

**N**  
SCALE

In the early 1900s, 2-6-2 locomotives were built to be used on the American mid-western prairies, earning them the nickname "Prairie." These locomotives often outlasted their more modern and efficient counterparts in branchline operations, thanks to their relatively light weight, ability to operate effectively in reverse, and good speed. Bachmann's N scale 2-6-2 features a die-cast chassis, operating coupler, metal wheels and side rods, a skew-wound motor with bronze bearings, engine and tender electrical pick-up, and traction tires for greater pulling power. Performs best on 11.25" Radius curves or greater.



**New and Now In Stock**



**Boston & Maine #1504**  
Item No. 51559



**Baltimore & Ohio® #2451**  
Item No. 51560

## Featured Items



**Santa Fe #2129**  
Item No. 51555



**CB&Q #2090**  
Item No. 51556

## Features include:

- 2-6-2 locomotive design
- die-cast chassis
- highly detailed body
- metal wheels and side rods
- traction tires for greater pulling power,
- E-Z Mate<sup>®</sup> Mark II couplers
- performs best on 11.25" radius curves or greater
- N Scale 1:160

[Click Here To See All Of Our N Scale Steam Locomotives](#)

Also Available in  
**HO Scale**



**Pennsylvania #2765**  
Item No. 51528



**Canadian National #3591**  
Item No. 51531



**Northern Pacific #2463**  
Item No. 51532

## Features include:

- 2-6-2 locomotive design
- operating smoke unit



- operating headlight
- die-cast chassis
- highly detailed body
- metal wheels and side rods
- *E-Z Mate*<sup>®</sup> Mark II couplers
- performs best on 18" radius curves or greater
- HO Scale 1:87

[Click here to see all of our HO Scale Prairie 2-6-2 Steam Locomotives](#)

