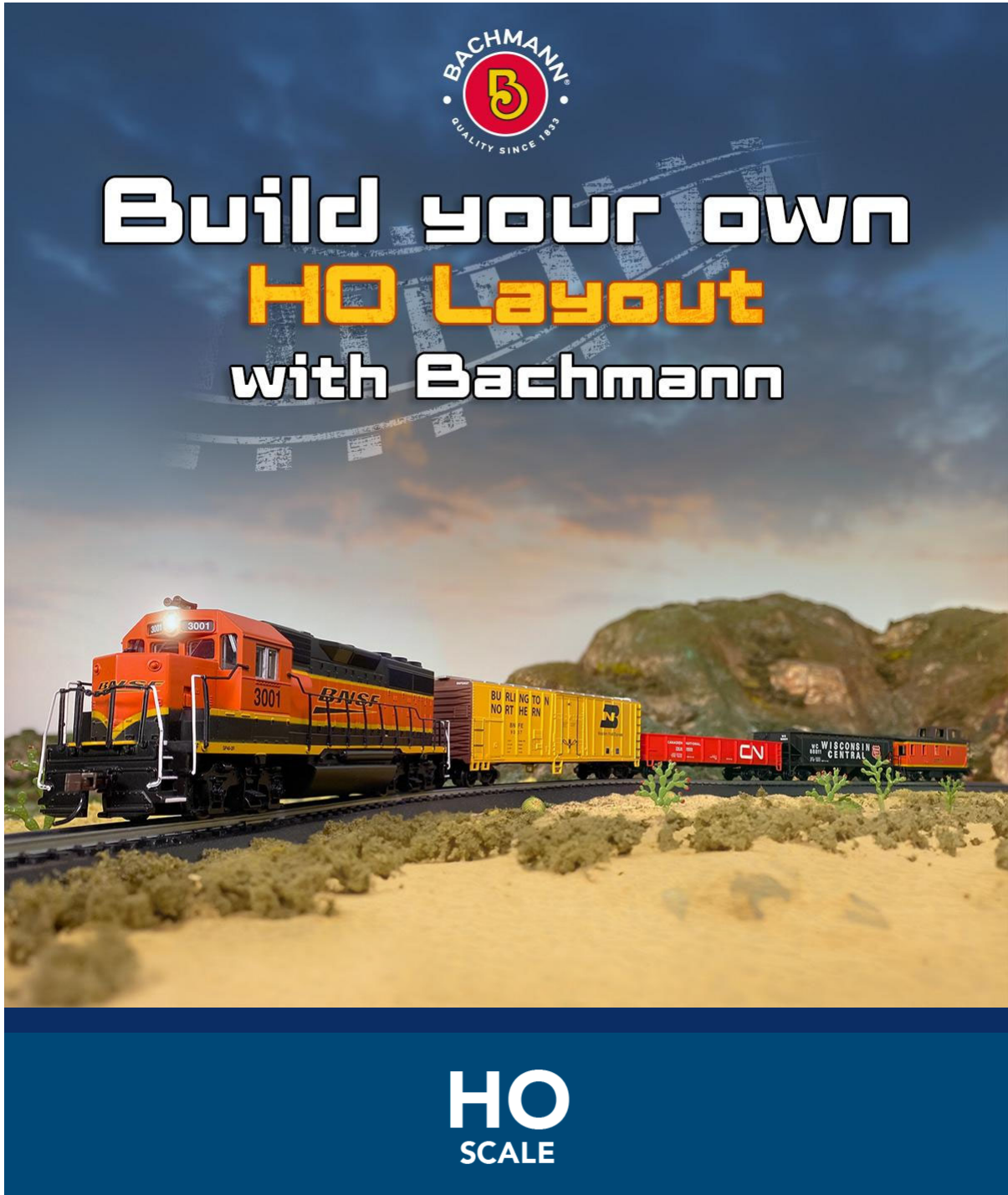


SHARE:

[Join Our Email List](#)

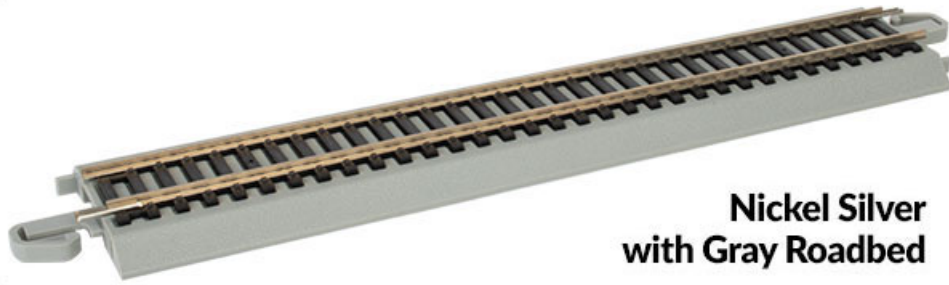
[View as Webpage](#)

The image is a promotional graphic for Bachmann HO Scale trains. At the top center is the Bachmann logo, a red circle with a white 'B' and the text 'BACHMANN' and 'QUALITY SINCE 1853'. Below the logo, the text 'Build your own HO Layout with Bachmann' is displayed in a large, bold, white font with a yellow outline. The background of the graphic is a photograph of a model train set in a desert landscape. The train consists of an orange and black BNSF locomotive numbered 3001, followed by a yellow boxcar with 'BURLINGTON NORFOLK SOUTHERN' and a 'B' logo, a red CN boxcar, and a black Wisconsin Central boxcar. The train is on a track with realistic desert terrain, including sand and small green bushes. At the bottom of the graphic, a dark blue banner contains the text 'HO SCALE' in white, bold, sans-serif font.

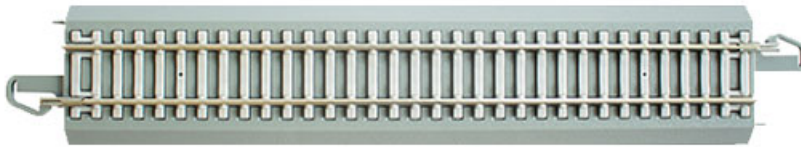
This week we're looking at the next steps in building or assembling the HO Scale layout you've always wanted. Missed Part One? [Click here](#). Constructing your HO Scale layout with Bachmann's easy-to-assemble, snap-fit *E-Z Track*® will ensure your railroading empire is ready for action in no time.



**Steel Alloy
with Black Roadbed**



**Nickel Silver
with Gray Roadbed**



**Nickel Silver
with Gray Roadbed & Concrete Ties**



Accessories

Explore Our Full Range of HO Scale E-Z Track®

Expand with Bachmann's Track Packs



Bachmann has a wide variety of expansion packs to allow you to turn your layout into the envy of HO Scale railroaders everywhere. Ranging from simple figure-eight loops to 45-piece packs made in conjunction with *World's Greatest Hobby*SM, your railroading scene can reach as far and wide as your inspiration and available space will take you.



Steel Alloy E-Z Track[®] Over-Under Figure 8 Track Pack
Item No. 44475

Click on the image for more information. Locomotive and rolling stock not included.



World's Greatest HobbySM First Railroad Track Pack

(Fits on a 4' x 8' sheet of plywood)
*Nickel Silver Item No. 44596 is shown. Also available in Steel Alloy.
Click the image above for more information.*

Explore Our Full Range of E-Z Track® Packs



SHARE:

[Join Our Email List](#)

[View as Webpage](#)



Baldwin 2-8-0 Consolidation
DCC *Econami*™ Sound Value Equipped

HO
SCALE

The Baldwin 2-8-0, constructed between the 1900s and 1940s, proved to be one of the most popular locomotives in their catalog. Typically found in freight service, the 2-8-0 was

a versatile locomotive that could just as easily handle a passenger train, and several have survived into preservation where they continue to perform this role to this day. Bachmann's HO Scale Baldwin 2-8-0 replicates the iconic design with intricate detail. With features such as separately applied piping and grab irons, operating metal drivers, and Rule 17 lighting, the model arrives with Econami™ Sound Value® DCC. Factory-set for realism, the Econami™ steam package offers prototypical chuff, short and long whistles, bell, air pump, steam release, , and blower - all in 16-bit polyphonic sound. Give your HO Scale freight consists the power they need with the Bachmann Baldwin 2-8-0 with Econami™ Sound Value®!



New and Shipping Now



BOSTON & MAINE #2394

Item No. 57907



LACKAWANNA #369

Item No. 57908



PENNSYLVANIA #7746

Item No. 57909



SANTA FE #2525

Item No. 57910

Included Features

- Dual-mode Soundtraxx® Econami™ DCC Sound Value On Board®
- Ready-to-run with digital sound and lighting control
- Precision motor
- Operating headlight
- Completely hidden drivetrain
- Separate sanding lines
- Separately-applied details including bell, whistle, pop valves, and handrails
- Builders plate
- *E-Z Mate*® Mark II couplers
- Performs best on 18" radius curves or greater
- HO scale 1:87

[Click Here for Our Full Selection of HO Scale Steam Locomotives](#)

Also Available in N Scale

N
SCALE



WESTERN PACIFIC™ #235
Item No. 51351



UNION PACIFIC® #5156
Item No. 51356



SOUTHERN #630
Item No. 51357



NEW YORK CENTRAL #1144
Item No. 51358

[Click Here for Our Full Selection of N Scale Steam Locomotives](#)



SHARE:

[Join Our Email List](#)

[View as Webpage](#)



HO
SCALE

**NEW AND NOW IN STOCK
HO SCALE SHORT BODY BAY
WINDOW TRANSFER CABOOSE**

Designed for the Missouri Pacific™ in the late 1970s, the Short Body Bay Window Caboose was one of the very last cabooses styles to be built for class-one operation. With End-of-Train Devices fast replacing cabooses on the rear of road trains, the Short Body Bay Window Caboose was constructed with a design that could easily be adapted for shoving or “transfer” movements, featuring a longer platform on each end of the body for external riding. The basic design was adopted by several other railroads, including the Louisville & Nashville® (ultimately continuing in service under CSX® ownership) and Southern Pacific™, while many of the original MoPac cars continued in operation long after the Missouri Pacific™ merged into the Union Pacific® system. The Bachmann Short Body Bay Window “Transfer” Caboose arrives with newly tooled components, accurate details, blackened metal wheels, and E-Z Mate® knuckle couplers.

Creative Commons Licensed Image by BFS Man



CSX® #16624

Item No. 76401



MISSOURI PACIFIC™ #13061

Item No. 76402



SOUTHERN PACIFIC™ #1

Item No. 76403



UNION PACIFIC® #13737

Item No. 76404



Features Included

- authentic paint schemes reflecting both early and late operators
- highly detailed painted bodies with precision graphics
- detailed underbody
- blackened machined metal wheels with RP25 contours

- magnetically operated *E-Z Mate*® Mark II couplers
- non-magnetic axles
- HO Scale 1:87

[Click Here for Our Full Selection of HO Scale Cabooses](#)



SHARE:

[Join Our Email List](#)

[View as Webpage](#)



N
SCALE

Bring Your N Scale Livestock Transport to Life with Bachmann Animated Stock Cars

Enjoy the animated action as four animal heads peek back and forth through the windows of the Bachmann Animated Stock Car as it moves across your layout! Stock Cars, also referred to as Cattle Cars, are a type of rolling stock used to transport livestock and larger animals between farms and other destinations. They were a common sight on railroads across North America from the late 1800s right up until the mid-1950s when trucking became more economical. The Bachmann Animated Stock Car rekindles the heyday of these fascinating railcars with a selection of attractive and authentic paint schemes, featuring a range of animated animal cargo including cows, horses, and reindeer!

Creative Commons CC BY-SA 4.0 Licensed Image by Chris Light



New and Now In Stock



CB&Q #52105 with CATTLE
Item No. 19751



UNION PACIFIC with HORSES
Item No. 19752



RIO GRANDE with CATTLE
Item No. 19753



NP&S CHRISTMAS with REINDEER
Item No. 19754

FEATURES INCLUDE

- premium *Silver Series*® rolling stock
- fully assembled
- precision graphics
- blackened-metal wheels with RP25 contours
- body-mounted, magnetically operated *E-Z Mate*® Mark II couplers
- non-magnetic blackened brass axles with needlepoint bearings
- Celcon® trucks
- added weight for optimum tracking performance
- N Scale 1:160

HO
SCALE

ANIMATED STOCK CARS
Also Available in HO Scale and Large "G" Scale

Bachmann HO Scale Animated Stock Cars



[Click Here to See Our Full Range of HO Scale Animated Stock Cars](#)

LARGE
SCALE

Bachmann Large Scale Animated Stock Cars



[Click Here to See Our Full Range of Large Scale Animated Stock Cars](#)



Bachmann is Headed to the Amherst Railway Society Railroad Hobby Show!

We'll be at the Amherst Railway Society Railroad Hobby Show this Saturday, January 27th, and Sunday the 28th. Stop by at our booth to check out our latest samples in person, ask a question of our knowledgeable team, or just say hi! We'll be revealing our new 2024 announcements at the show, and visitors will get the first chance to see samples of many of these items in person. See you there!

